

Smad3 Rabbit mAb

Catalog No: #48783

Package Size: #48783-1 50ul #48783-2 100ul

Orders: order@signalwayantibody.com

Support: tech@signalwayantibody.com

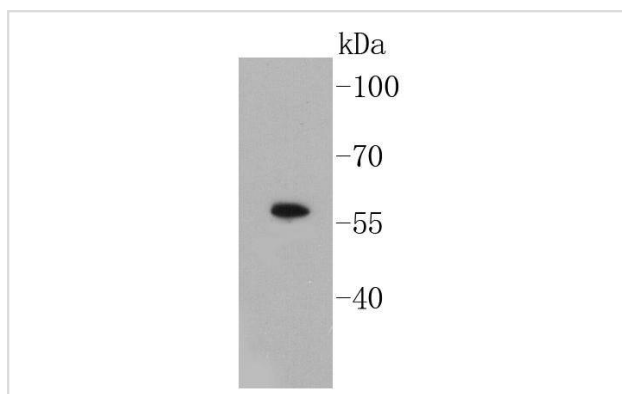
Description

Product Name	Smad3 Rabbit mAb
Host Species	Recombinant Rabbit
Clonality	Monoclonal antibody
Clone No.	SY25-01
Purification	ProA affinity purified
Applications	WB, ICC/IF, IHC, FC
Species Reactivity	Hu, Ms, Rt
Immunogen Description	recombinant protein
Other Names	DKFZP586N0721 antibody DKFZp686J10186 antibody hMAD 3 antibody hMAD-3 antibody hSMAD3 antibody HSPC193 antibody HST17436 antibody JV15 2 antibody JV15-2 antibody JV152 antibody LDS1C antibody LDS3 antibody MAD (mothers against decapentaplegic Drosophila) homolog 3 antibody MAD homolog 3 antibody Mad homolog JV15 2 antibody Mad protein homolog antibody MAD, mothers against decapentaplegic homolog 3 antibody Mad3 antibody MADH 3 antibody MADH3 antibody MGC60396 antibody Mothers against decapentaplegic homolog 3 antibody Mothers against DPP homolog 3 antibody SMA and MAD related protein 3 antibody SMAD 3 antibody SMAD antibody SMAD family member 3 antibody SMAD, mothers against DPP homolog 3 antibody Smad3 antibody SMAD3_HUMAN antibody
Accession No.	Swiss-Prot#:P84022
Uniprot	P84022
GeneID	4088;
Calculated MW	58 kDa
Formulation	1*TBS (pH7.4), 1%BSA, 40%Glycerol. Preservative: 0.05% Sodium Azide.
Storage	Store at -20°C

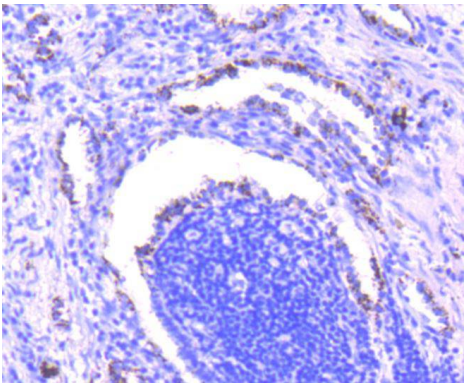
Application Details

WB: 1:1,000-1:2,000 IHC: 1:50-1:200 ICC: 1:50-1:200FC: 1:50-1:100

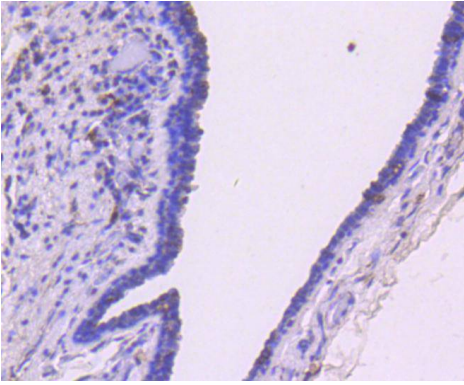
Images



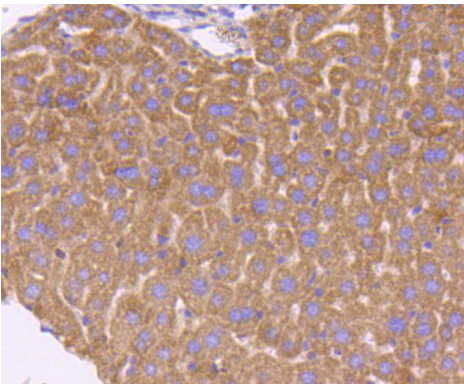
Western blot analysis of Smad3 on A549 cell lysates using anti-Smad3 antibody at 1/1,000 dilution.



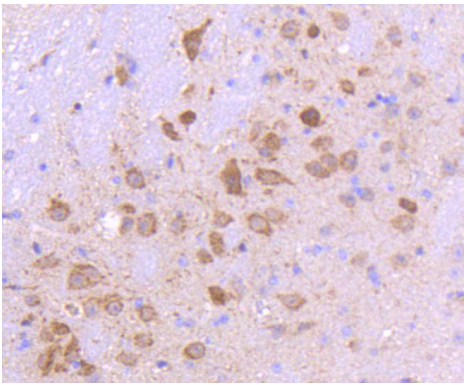
Immunohistochemical analysis of paraffin-embedded human lung cancer tissue using anti-Smad3 antibody. Counter stained with hematoxylin.



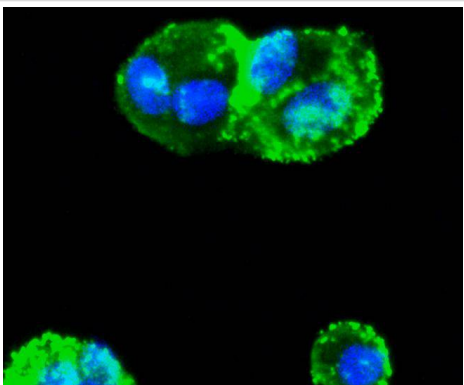
Immunohistochemical analysis of paraffin-embedded human breast carcinoma tissue using anti-Smad3 antibody. Counter stained with hematoxylin.



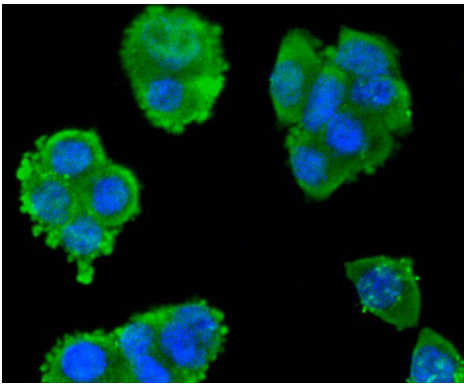
Immunohistochemical analysis of paraffin-embedded mouse liver tissue using anti-Smad3 antibody. Counter stained with hematoxylin.



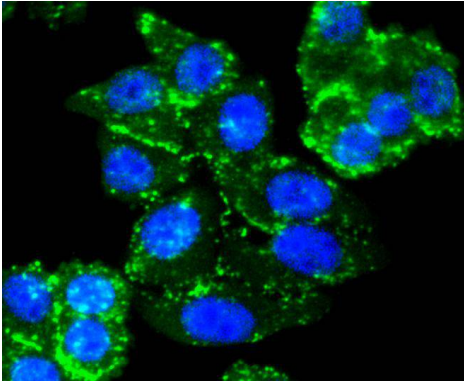
Immunohistochemical analysis of paraffin-embedded mouse brain tissue using anti-Smad3 antibody. Counter stained with hematoxylin.



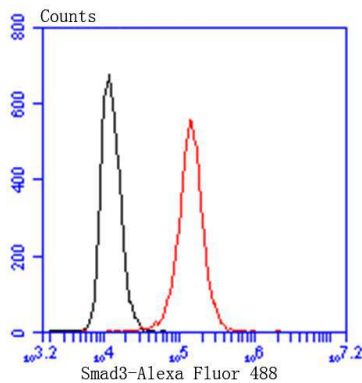
ICC staining Smad3 in HeLa cells (green). The nuclear counter stain is DAPI (blue). Cells were fixed in paraformaldehyde, permeabilised with 0.25% Triton X100/PBS.



ICC staining Smad3 in SW480 cells (green). The nuclear counter stain is DAPI (blue). Cells were fixed in paraformaldehyde, permeabilised with 0.25% Triton X100/PBS.



ICC staining Smad3 in HepG2 cells (green). The nuclear counter stain is DAPI (blue). Cells were fixed in paraformaldehyde, permeabilised with 0.25% Triton X100/PBS.



Flow cytometric analysis of Hela cells with Smad3 antibody at 1/50 dilution (red) compared with an unlabelled control (cells without incubation with primary antibody; black). Alexa Fluor 488-conjugated goat anti rabbit IgG was used as the secondary antibody.

Background

Smad proteins, the mammalian homologs of the *Drosophila* Mothers against dpp (Mad) have been implicated as downstream effectors of TGF β /BMP signaling. Smad1 (also designated Madr1 or JV4-1), Smad5 and mammalian Smad8 (also designated Smad9 or MADH6) are effectors of BMP2 and BMP4 function while Smad2 (also designated Madr2 or JV18-1) and Smad3 are involved in TGF β and activin-mediated growth modulation. Smad4 (also designated DPC4) has been shown to mediate all of the above activities through interaction with various Smad family members. Smad6 and Smad7 regulate the response to activin/TGF β signaling by interfering with TGF β -mediated phosphorylation of other Smad family members.

References

Note: This product is for in vitro research use only