

DNAJC15 Rabbit mAb

Catalog No: #48789

Package Size: #48789-1 50ul #48789-2 100ul

Orders: order@signalwayantibody.com

Support: tech@signalwayantibody.com

Description

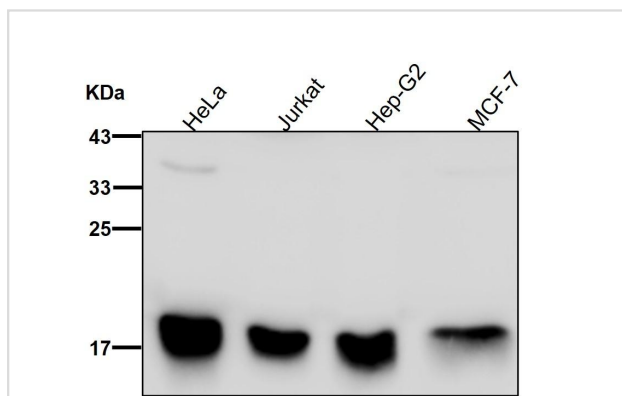
| | |
|-----------------------|---|
| Product Name | DNAJC15 Rabbit mAb |
| Clone No. | SY26-04 |
| Purification | Affinity-chromatography |
| Applications | WB, IHC |
| Species Reactivity | Hu, Ms, Rt |
| Immunogen Description | recombinant protein |
| Other Names | Cell growth inhibiting gene 22 protein antibody Cell growth-inhibiting gene 22 protein antibody DJC15_HUMAN antibody DnaJ (Hsp40) homolog subfamily C member 15 antibody DNAJ domain containing antibody DnaJ homolog subfamily C member 15 antibody DNAJC15 antibody DNAJD1 antibody GIG22 antibody HSD18 antibody MCJ antibody Methylation controlled J protein antibody Methylation-controlled J protein antibody |
| Accession No. | Swiss-Prot#:Q9Y5T4 |
| Uniprot | Q9Y5T4 |
| GeneID | 29103; |
| Calculated MW | 16 kDa |
| Concentration | 0.5mg/ml |
| Formulation | Rabbit IgG in 10mM phosphate buffered saline , pH 7.4, 150mM sodium chloride, 0.05% BSA, 0.02% sodium azide and 50% glycerol. |
| Storage | Store at +4°C for short term. Store at -20°C for long term. Avoid freeze/thaw cycle. |

Application Details

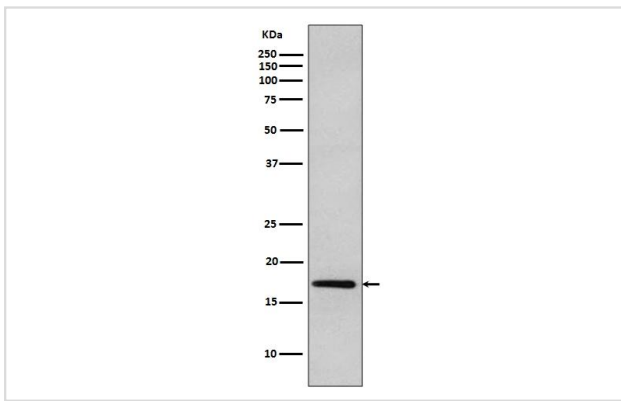
WB 1:1000-1:2000

IHC 1:100-1:200

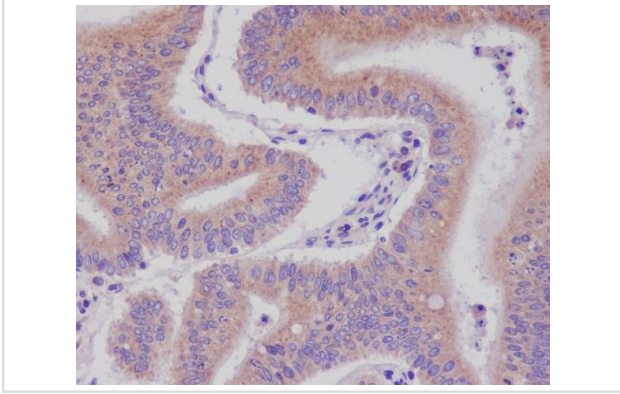
Images



All lanes use the Antibody at 1:2K dilution for 1 hour at room temperature.



Western blot analysis of DNAJC15 expression in MCF-7 cell lysate.



Immunohistochemical analysis of paraffin-embedded human colon carcinoma, using DNAJC15 Antibody.

Background

Negative regulator of the mitochondrial respiratory chain. Prevents mitochondrial hyperpolarization state and restricts mitochondrial generation of ATP. Acts as an import component of the TIM23 translocase complex. Stimulates the ATPase activity of HSPA9.

Note: This product is for in vitro research use only