

HAPLN1 Rabbit mAb

Catalog No: #48797

Package Size: #48797-1 50ul #48797-2 100ul

Orders: order@signalwayantibody.com

Support: tech@signalwayantibody.com

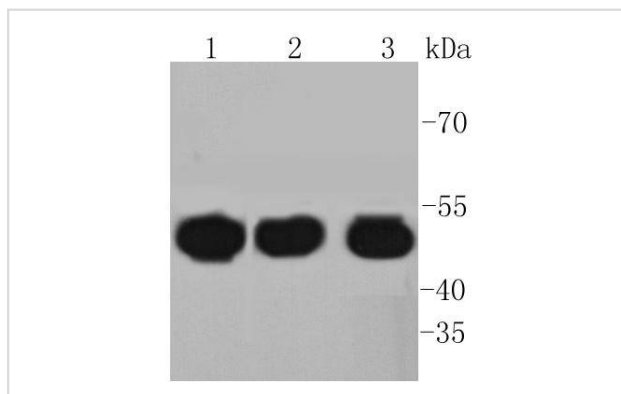
Description

| | |
|-----------------------|--|
| Product Name | HAPLN1 Rabbit mAb |
| Host Species | Recombinant Rabbit |
| Clonality | Monoclonal antibody |
| Clone No. | SY02-17 |
| Purification | ProA affinity purified |
| Applications | WB, ICC/IF, IHC |
| Species Reactivity | Hu, Ms, Rt, zebrafish |
| Immunogen Description | recombinant protein |
| Other Names | Cartilage link protein antibody cartilage linking protein 1 antibody Cartilage-link protein antibody Cartilage-linking protein 1 antibody CLP antibody CRTL1 antibody Crtl1l antibody HAPLN1 antibody HPLN1_HUMAN antibody Hyaluronan and proteoglycan link protein 1 antibody Hyaluronan and proteoglycan link protein 1 precursor antibody LP antibody Proteoglycan link protein antibody |
| Accession No. | Swiss-Prot#:P10915 |
| Uniprot | P10915 |
| GeneID | 1404; |
| Calculated MW | 48 kDa |
| Formulation | 1*TBS (pH7.4), 1%BSA, 40%Glycerol. Preservative: 0.05% Sodium Azide. |
| Storage | Store at -20°C |

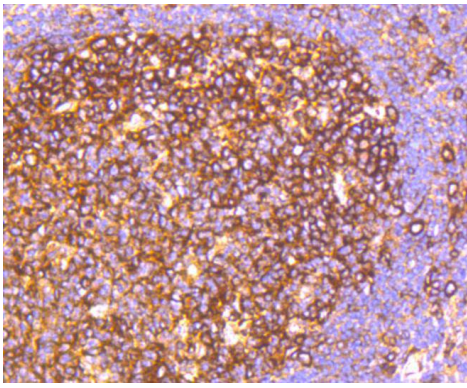
Application Details

WB: 1:1,000-5,000

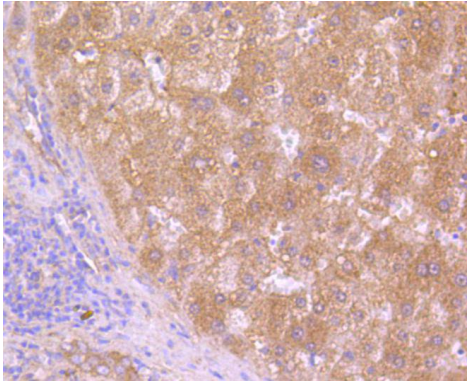
Images



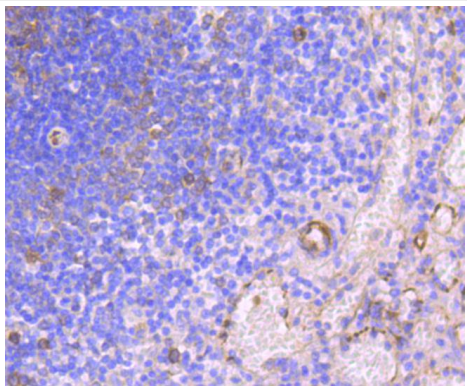
Western blot analysis of HAPLN1 on different lysates using anti-HAPLN1 antibody at 1/1,000 dilution. Positive control:
Lane 1: BT-20 Lane 2: HUVEC Lane 3: SW480



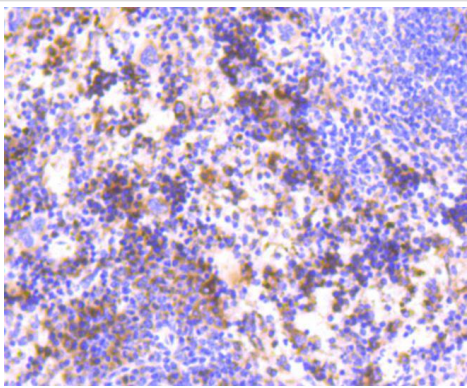
Immunohistochemical analysis of paraffin-embedded human tonsil tissue using anti-HAPLN1 antibody. Counter stained with hematoxylin.



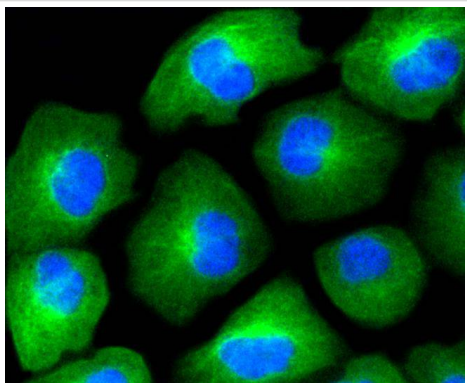
Immunohistochemical analysis of paraffin-embedded human liver tissue using anti-HAPLN1 antibody. Counter stained with hematoxylin.



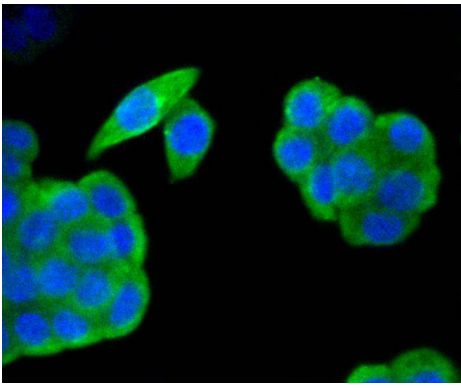
Immunohistochemical analysis of paraffin-embedded human spleen tissue using anti-HAPLN1 antibody. Counter stained with hematoxylin.



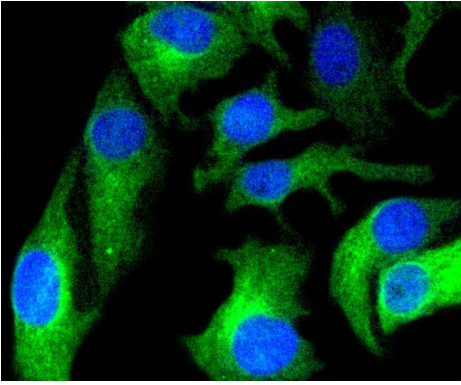
Immunohistochemical analysis of paraffin-embedded mouse spleen tissue using anti-HAPLN1 antibody. Counter stained with hematoxylin.



ICC staining HAPLN1 in HUVEC cells (green). The nuclear counter stain is DAPI (blue). Cells were fixed in paraformaldehyde, permeabilised with 0.25% Triton X100/PBS.



ICC staining HAPLN1 in SW480 cells (green). The nuclear counter stain is DAPI (blue). Cells were fixed in paraformaldehyde, permeabilised with 0.25% Triton X100/PBS.



ICC staining HAPLN1 in BT-20 cells (green). The nuclear counter stain is DAPI (blue). Cells were fixed in paraformaldehyde, permeabilised with 0.25% Triton X100/PBS.

Background

The human cartilage link protein, also designated HAPLN1, is a member of the hyaluronan and proteoglycan link protein (HAPLN) family of proteins. This family contains 4 proteins with approximately 50% homology. The human cartilage link protein strengthens tissue architecture by using hyaluronic acid to stabilize the aggregates of proteoglycan monomers inside the extracellular cartilage matrix. It is widely expressed in most tissue types except brain tissue where, much like the other human cartilage link protein genes, it is weakly expressed. The HAPLN and the brain-specific CSPG genes, as well as other members of the link module superfamily, appear to have a common ancestral gene origin.

References

Note: This product is for in vitro research use only