

## PARP Rabbit mAb

Catalog No: #48838

Package Size: #48838-1 50ul #48838-2 100ul

Orders: order@signalwayantibody.com

Support: tech@signalwayantibody.com

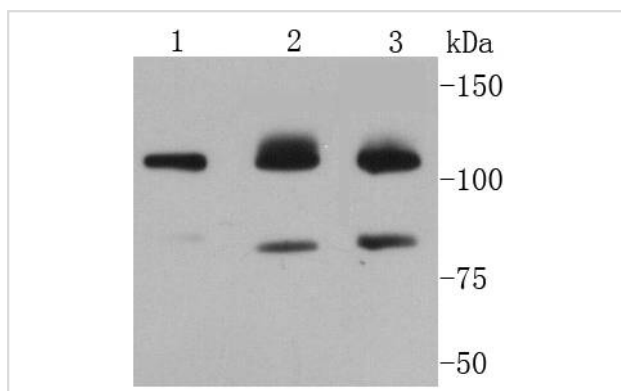
## Description

Product Name	PARP Rabbit mAb
Host Species	Recombinant Rabbit
Clonality	Monoclonal antibody
Clone No.	SU03-68
Purification	ProA affinity purified
Applications	WB, ICC/IF, IHC, FC
Species Reactivity	Hu, Ms, Rt
Immunogen Description	recombinant protein
Other Names	ADP ribosyltransferase (NAD <sup>+</sup> ; poly (ADP ribose) polymerase) antibody ADP ribosyltransferase diphtheria toxin like 1 antibody ADP ribosyltransferase NAD(+) antibody ADPRT 1 antibody ADPRT antibody ADPRT1 antibody ARTD1 antibody msPARP antibody NAD(+) ADP ribosyltransferase 1 antibody NAD(+) ADP-ribosyltransferase 1 antibody pADPRT 1 antibody pADPRT1 antibody PARP 1 antibody PARP antibody PARP-1 antibody PARP1 antibody PARP1_HUMAN antibody Poly (ADP ribose) polymerase 1 antibody poly (ADP ribose) polymerase family, member 1 antibody Poly [ADP-ribose] polymerase 1 antibody Poly(ADP ribose) polymerase antibody poly(ADP ribose) synthetase antibody poly(ADP ribosyl)transferase antibody Poly[ADP ribose] synthetase 1 antibody Poly[ADP-ribose] synthase 1 antibody PPOL antibody
Accession No.	Swiss-Prot#:P09874
Uniprot	P09874
GeneID	142;
Calculated MW	113/89 kDa
Formulation	1*TBS (pH7.4), 1%BSA, 40%Glycerol. Preservative: 0.05% Sodium Azide.
Storage	Store at -20°C

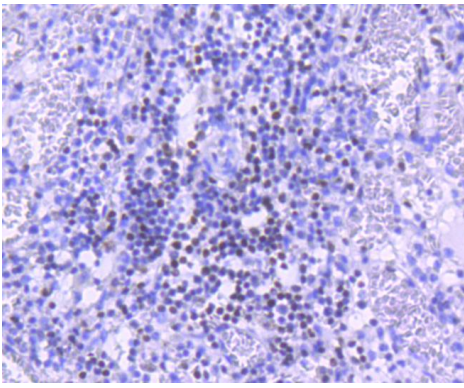
## Application Details

WB: 1:1,000 IHC: 1:50-1:200 ICC: 1:50-1:200 FC: 1:50-1:100

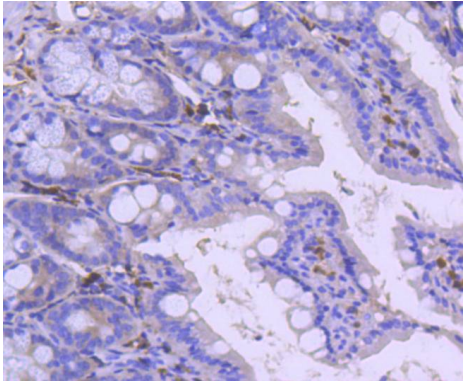
## Images



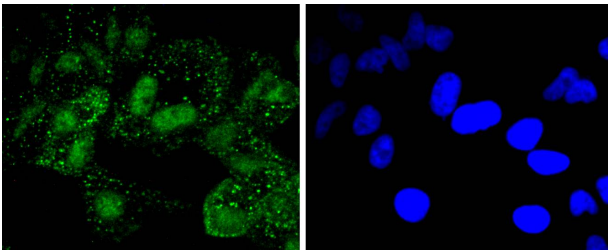
Western blot analysis of PARP on different lysates using anti-PARP antibody at 1/1,000 dilution. Positive control: Lane 1: A549 Lane 2: Jurkat Lane 3: Hela



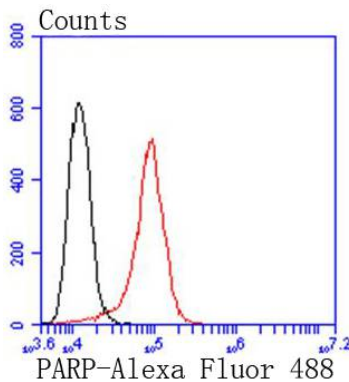
Immunohistochemical analysis of paraffin-embedded human spleen tissue using anti-PARP antibody. Counter stained with hematoxylin.



Immunohistochemical analysis of paraffin-embedded mouse colon tissue using anti-PARP antibody. Counter stained with hematoxylin.



ICC staining PARP in HeLa cells (green). The nuclear counter stain is DAPI (blue). Cells were fixed in paraformaldehyde, permeabilised with 0.25% Triton X100/PBS.



Flow cytometric analysis of HeLa cells with PARP antibody at 1/50 dilution (red) compared with an unlabelled control (cells without incubation with primary antibody; black). Alexa Fluor 488-conjugated goat anti rabbit IgG was used as the secondary antibody.

## Background

PARP, a 116 kDa nuclear poly (ADP-ribose) polymerase, appears to be involved in DNA repair in response to environmental stress. This protein can be cleaved by many ICE-like caspases *in vitro* and is one of the main cleavage targets of caspase-3 *in vivo*. In human PARP, the cleavage occurs between Asp214 and Gly215, which separates the PARP amino-terminal DNA binding domain (24 kDa) from the carboxy-terminal catalytic domain (89 kDa). PARP helps cells to maintain their viability; cleavage of PARP facilitates cellular disassembly and serves as a marker of cells undergoing apoptosis.

## References

---

Note: This product is for in vitro research use only