

## YB1 Rabbit mAb

Catalog No: #48851

Package Size: #48851-1 50ul #48851-2 100ul

Orders: order@signalwayantibody.com

Support: tech@signalwayantibody.com

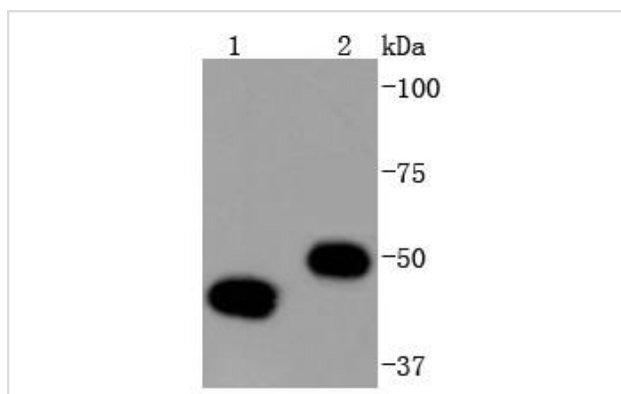
## Description

Product Name	YB1 Rabbit mAb
Host Species	Recombinant Rabbit
Clonality	Monoclonal antibody
Clone No.	ST0432
Purification	ProA affinity purified
Applications	WB, ICC/IF, IHC, IP, FC
Species Reactivity	Hu, Ms, Rt
Immunogen Description	recombinant protein
Other Names	BP 8 antibody CBF-A antibody CCAAT binding transcription factor I subunit A antibody CCAAT-binding transcription factor I subunit A antibody CSDA2 antibody CSDB antibody DBPB antibody DNA binding protein B antibody DNA-binding protein B antibody EFI-A antibody Enhancer factor I subunit A antibody MDR NF1 antibody MGC104858 antibody MGC110976 antibody MGC117250 antibody NSEP 1 antibody NSEP1 antibody Nuclease sensitive element binding protein 1 antibody Nuclease-sensitive element-binding protein 1 antibody p50 antibody Q15905 antibody Y-box binding protein 1 antibody Y-box transcription factor antibody Y-box-binding protein 1 antibody YB 1 antibody YB-1 antibody YBOX1_HUMAN antibody YBX 1 antibody ybx1 antibody
Accession No.	Swiss-Prot#:P67809
Uniprot	P67809
GeneID	4904;
Calculated MW	50 kDa
Formulation	1*TBS (pH7.4), 1%BSA, 40%Glycerol. Preservative: 0.05% Sodium Azide.
Storage	Store at -20°C

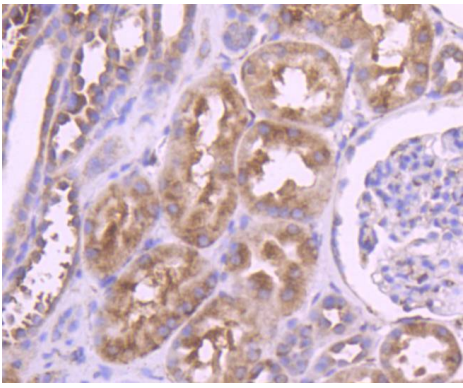
## Application Details

WB: 1:1,000-5,000 IHC: 1:50-1:200 ICC: 1:100-1:500 FC: 1:50-1:100

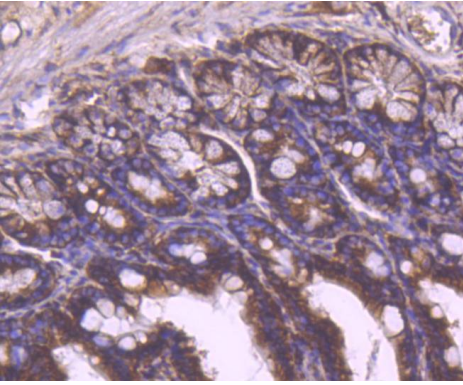
## Images



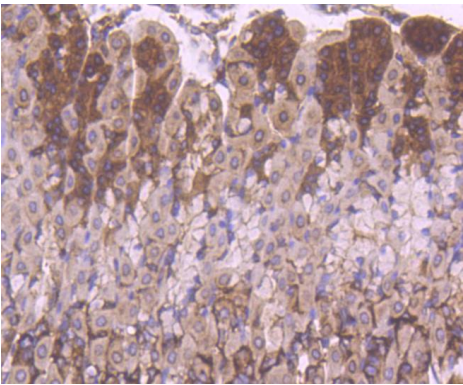
Western blot analysis of YB1 on different lysates using anti-YB1 antibody at 1/1,000 dilution. Positive control: Lane 1: Hela Lane 2: Jurkat



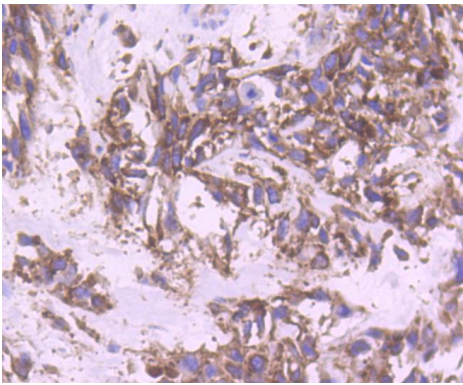
Immunohistochemical analysis of paraffin-embedded human kidney tissue using anti-YB1 antibody. Counter stained with hematoxylin.



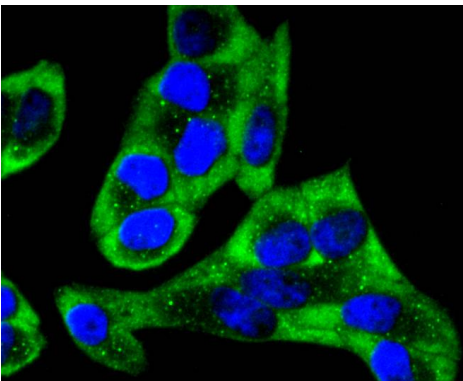
Immunohistochemical analysis of paraffin-embedded mouse colon tissue using anti-YB1 antibody. Counter stained with hematoxylin.



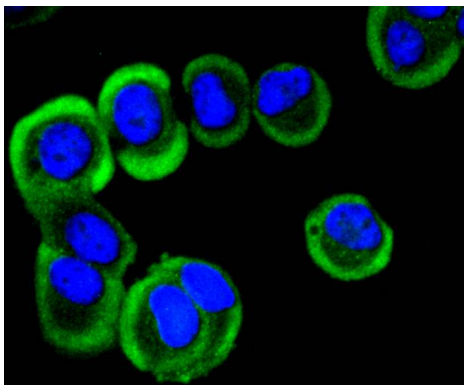
Immunohistochemical analysis of paraffin-embedded mouse stomach tissue using anti-YB1 antibody. Counter stained with hematoxylin.



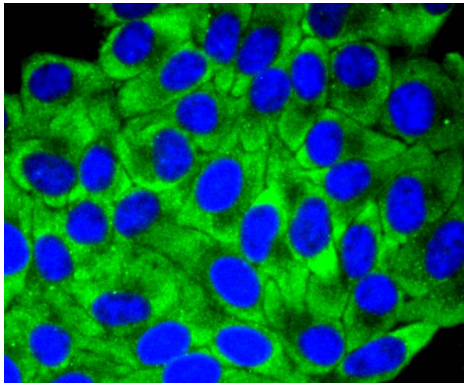
Immunohistochemical analysis of paraffin-embedded human breast carcinoma tissue using anti-YB1 antibody. Counter stained with hematoxylin.



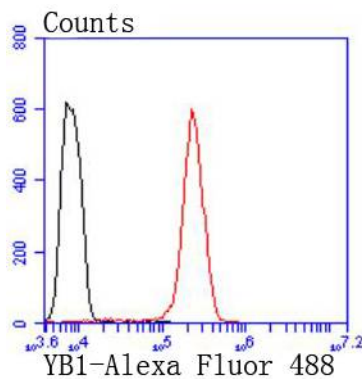
ICC staining YB1 in Hela cells (green). The nuclear counter stain is DAPI (blue). Cells were fixed in paraformaldehyde, permeabilised with 0.25% Triton X100/PBS.



ICC staining YB1 in MCF-7 cells (green). The nuclear counter stain is DAPI (blue). Cells were fixed in paraformaldehyde, permeabilised with 0.25% Triton X100/PBS.



ICC staining YB1 in HepG2 cells (green). The nuclear counter stain is DAPI (blue). Cells were fixed in paraformaldehyde, permeabilised with 0.25% Triton X100/PBS.



Flow cytometric analysis of HeLa cells with YB1 antibody at 1/50 dilution (red) compared with an unlabelled control (cells without incubation with primary antibody; black). Alexa Fluor 488-conjugated goat anti rabbit IgG was used as the secondary antibody.

## Background

Y-box binding protein YB-1 (also known as CCAAT-binding transcription factor, enhancer factor I subunit A and DNA-binding protein B) belongs to a family of multifunctional proteins which regulate both transcription and translation. Y-box proteins interact with a wide variety of nucleic acid structures to act as transcription factors and mRNA masking proteins. The modular structure of Y-box proteins includes a highly conserved N-terminal cold-shock domain (CSD, equivalent to the bacterial cold-shock proteins) and four basic C-terminal domains containing Arginine clusters and aromatic residues. YB-1 plays a role in cell proliferation as an activator of growth-associated gene expression. YB-1 is also a repressor of the cell death-associated gene FAS. YB-1 may play an important role in controlling cell survival by regulating the expression of cell growth-associated and death-associated genes.

## References

Note: This product is for in vitro research use only