

Phospho-Src(Y419) Rabbit mAb

Catalog No: #13367



Package Size: #13367-1 50ul #13367-2 100ul

Orders: order@signalwayantibody.comSupport: tech@signalwayantibody.com

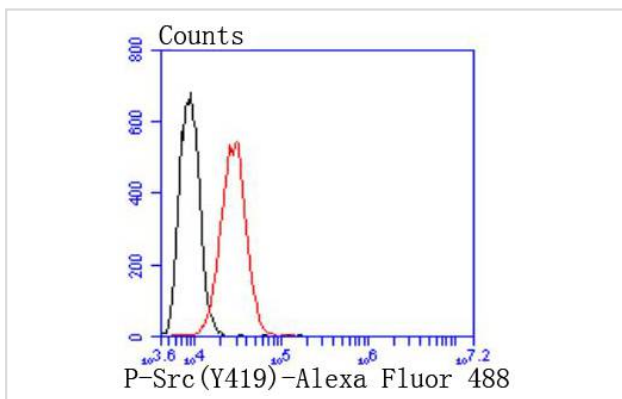
Description

Product Name	Phospho-Src(Y419) Rabbit mAb
Host Species	Rabbit
Clonality	Monoclonal
Clone No.	ST0800
Purification	ProA affinity purified
Applications	WB, FC
Species Reactivity	Hu, Ms, Rt
Immunogen Description	Synthetic phospho-peptide corresponding to residues surrounding Tyr419 of human Src.
Other Names	ASV antibody Avian sarcoma virus antibody c SRC antibody CDNA FLJ14219 fis clone NT2RP3003800 highly similar to Rattus norvegicus tyrosine protein kinase pp60 c src mRNA antibody cSrc antibody EC 2.7.10.2 antibody Neuronal CSRC tyrosine specific protein kinase antibody Neuronal SRC antibody Oncogene SRC antibody OTTHUMP00000174476 antibody OTTHUMP00000174477 antibody p60 Src antibody p60-Src antibody p60Src antibody pp60c src antibody pp60c-src antibody pp60csrc antibody Proto oncogene tyrosine protein kinase Src antibody Proto-oncogene c-Src antibody Proto-oncogene tyrosine-protein kinase Src antibody Protooncogene SRC antibody Protooncogene SRC Rous sarcoma antibody Src antibody SRC Oncogene antibody SRC proto oncogene non receptor tyrosine kinase antibody SRC_HUMAN antibody SRC1 antibody Tyrosine kinase pp60c src antibody Tyrosine protein kinase SRC 1 antibody Tyrosine protein kinase SRC1 antibody v src avian sarcoma (Schmidt Rupp A2) viral oncogene homolog antibody V src sarcoma (Schmidt Rupp A 2) viral oncogene homolog (avian) antibody v src sarcoma (Schmidt Rupp A 2) viral oncogene homolog avian antibody
Accession No.	Swiss-Prot#:P12931
Uniprot	P12931
GeneID	6714;
Calculated MW	60 kDa
Formulation	1*TBS (pH7.4), 1%BSA, 40%Glycerol. Preservative: 0.05% Sodium Azide.
Storage	Store at -20°C

Application Details

WB: 1:1,000 FC: 1:50-1:100

Images



Flow cytometric analysis of HeLa cells with Phospho-Src(Y419) antibody at 1/50 dilution (red) compared with an unlabelled control (cells without incubation with primary antibody; black). Alexa Fluor 488-conjugated goat anti rabbit IgG was used as the secondary antibody.

Background

The Src family of protein tyrosine kinases, which includes Src, Lyn, Fyn, Yes, Lck, Blk, and Hck, are important in the regulation of growth and differentiation of eukaryotic cells. Src activity is regulated by tyrosine phosphorylation at two sites, but with opposing effects. While phosphorylation at Tyr416 in the activation loop of the kinase domain upregulates enzyme activity, phosphorylation at Tyr527 in the carboxy-terminal tail by Csk renders the enzyme less active.

References

Note: This product is for in vitro research use only