

Stathmin 1 Rabbit mAb

Catalog No: #48859

Package Size: #48859-1 50ul #48859-2 100ul

Orders: order@signalwayantibody.com

Support: tech@signalwayantibody.com

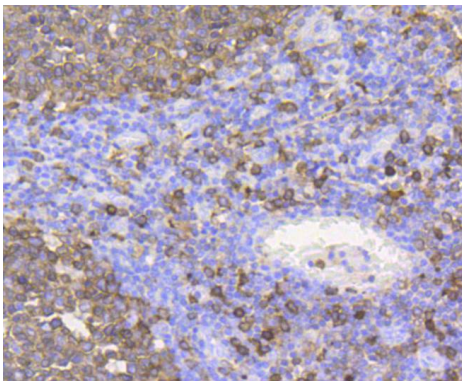
Description

Product Name	Stathmin 1 Rabbit mAb
Host Species	Recombinant Rabbit
Clonality	Monoclonal antibody
Clone No.	SS0453
Purification	ProA affinity purified
Applications	WB, ICC, IHC, IP, FC
Species Reactivity	Hu, Ms, Rt
Immunogen Description	recombinant protein
Other Names	C1orf215 antibody Lag antibody LAP 18 antibody LAP18 antibody Leukemia associated phosphoprotein p18 antibody Leukemia-associated phosphoprotein p18 antibody Metablastin antibody Oncoprotein 18 antibody OP 18 antibody Op18 antibody p18 antibody p19 antibody Phosphoprotein 19 antibody Phosphoprotein p19 antibody pp17 antibody pp19 antibody PR22 antibody Pr22 protein antibody Prosolin antibody Protein Pr22 antibody SMN antibody Stathmin antibody Stathmin1 antibody STMN 1 antibody Stmn1 antibody STMN1_HUMAN antibody
Accession No.	Swiss-Prot#:P16949
Uniprot	P16949
GenelD	3925;
Calculated MW	18 kDa
Formulation	1*TBS (pH7.4), 1%BSA, 40%Glycerol. Preservative: 0.05% Sodium Azide.
Storage	Store at -20°C

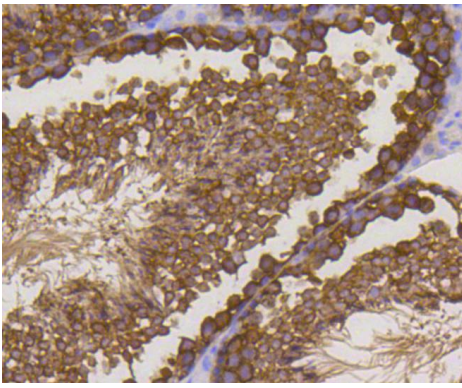
Application Details

WB: 1:1,000-1:2,000 IHC: 1:50-1:200 ICC: 1:100-1:500FC: 1:50-1:100

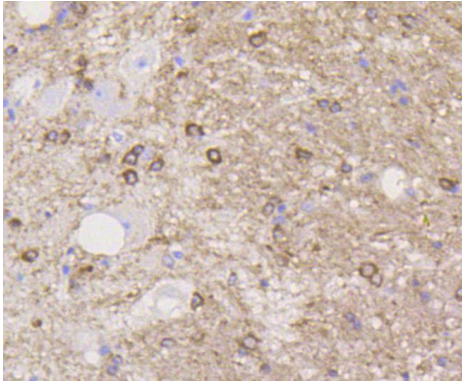
Images



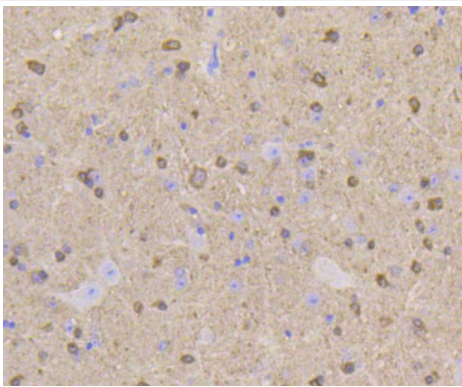
Immunohistochemical analysis of paraffin-embedded human tonsil tissue using anti-Stathmin 1 antibody. Counter stained with hematoxylin.



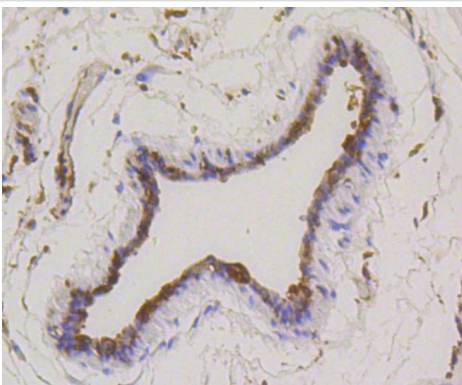
Immunohistochemical analysis of paraffin-embedded mouse testis tissue using anti-Stathmin 1 antibody. Counter stained with hematoxylin.



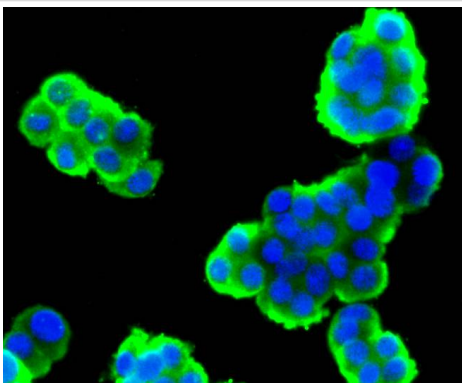
Immunohistochemical analysis of paraffin-embedded mouse spinal cord tissue using anti-Stathmin 1 antibody. Counter stained with hematoxylin.



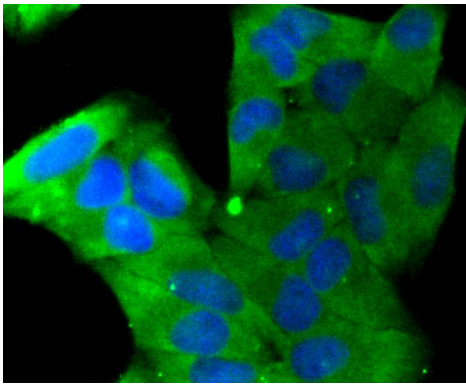
Immunohistochemical analysis of paraffin-embedded mouse brain tissue using anti-Stathmin 1 antibody. Counter stained with hematoxylin.



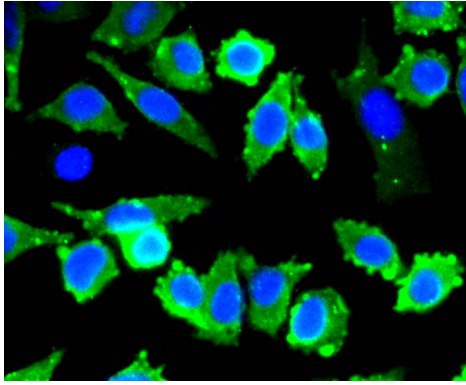
Immunohistochemical analysis of paraffin-embedded human breast carcinoma tissue using anti-Stathmin 1 antibody. Counter stained with hematoxylin.



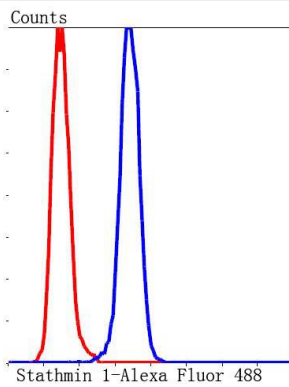
ICC staining Stathmin 1 in PC-12 cells (green). The nuclear counter stain is DAPI (blue). Cells were fixed in paraformaldehyde, permeabilised with 0.25% Triton X100/PBS.



ICC staining Stathmin 1 in Hela cells (green). The nuclear counter stain is DAPI (blue). Cells were fixed in paraformaldehyde, permeabilised with 0.25% Triton X100/PBS.



ICC staining Stathmin 1 in SH-SY-5Y cells (green). The nuclear counter stain is DAPI (blue). Cells were fixed in paraformaldehyde, permeabilised with 0.25% Triton X100/PBS.



Flow cytometric analysis of Hela cells with Stathmin 1 antibody at 1/50 dilution (blue) compared with an unlabelled control (cells without incubation with primary antibody; red). Alexa Fluor 488-conjugated goat anti rabbit IgG was used as the secondary antibody.

Background

Op18 (for oncoprotein 18, also designated stathmin, prosolin or metablastin) is a conserved, tubulin-associated, intracellular phosphoprotein. Many different phosphorylated forms of Op18 are observed, and it is expressed as two different isoforms. Op18 is considered a critical regulator of microtubulin dynamics and is downregulated by p53. It serves as a transducing protein, via phosphorylation, for a variety of cell signaling pathways and involved in both mitosis and differentiation. Op18 is present in many cancers, including breast carcinomas, and is highly expressed in acute leukemias of different subtypes.

References

Note: This product is for in vitro research use only