

## ASH2L Rabbit mAb

Catalog No: #48863

Package Size: #48863-1 50ul #48863-2 100ul

Orders: order@signalwayantibody.com

Support: tech@signalwayantibody.com

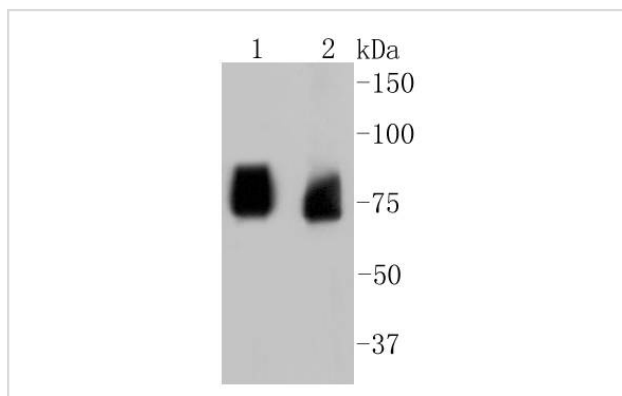
## Description

Product Name	ASH2L Rabbit mAb
Host Species	Recombinant Rabbit
Clonality	Monoclonal antibody
Clone No.	ST47-01
Purification	ProA affinity purified
Applications	WB, ICC/IF, IHC
Species Reactivity	Hu, Ms, Rt
Immunogen Description	recombinant protein
Other Names	ASH 2 antibody Ash2 (absent small or homeotic) like antibody Ash2 (absent, small, or homeotic) like (Drosophila) antibody ASH2 antibody ASH2 LIKE antibody ASH2 like protein antibody ASH2-like protein antibody Ash2l antibody ASH2L_HUMAN antibody ASH2L1 antibody ASH2L2 antibody Bre 2 antibody Bre2 antibody Discs 2-like antibody Drosophila absent, small, or homeotic antibody Drosophila ASH2-like antibody Set1/Ash2 histone methyltransferase complex subunit ASH2 antibody
Accession No.	Swiss-Prot#:Q9UBL3
Uniprot	Q9UBL3
GeneID	9070;
Calculated MW	69 kDa
Formulation	1*TBS (pH7.4), 1%BSA, 40%Glycerol. Preservative: 0.05% Sodium Azide.
Storage	Store at -20°C

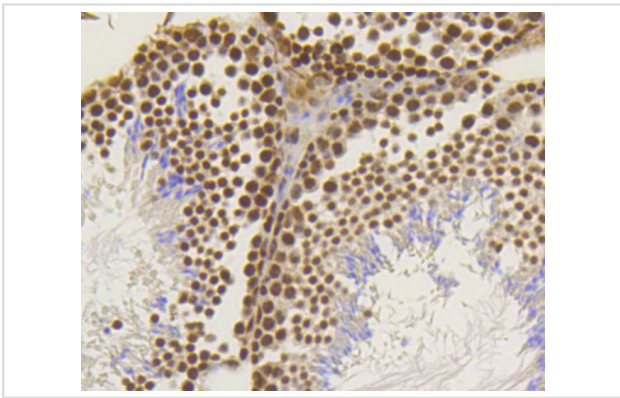
## Application Details

WB: 1:1,000-5,000 IHC: 1:200-1:500 ICC: 1:200-1:500

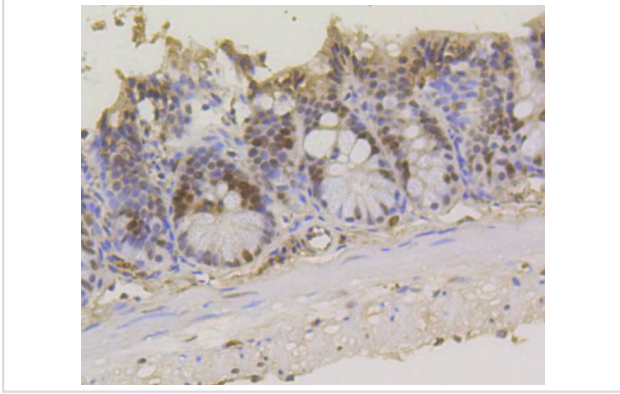
## Images



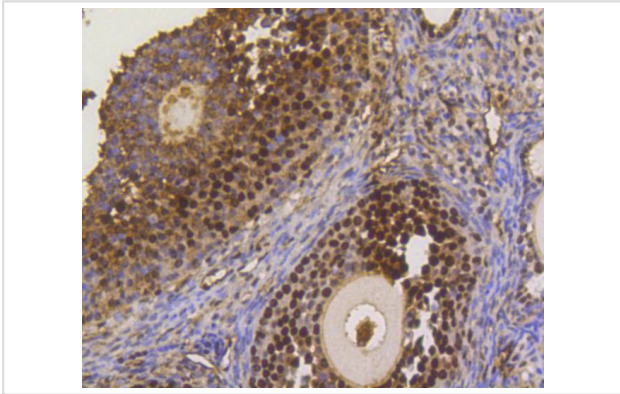
Western blot analysis of ASH2L on different lysates using anti-ASH2L antibody at 1/1,000 dilution. Positive control:  
Lane 1: PC12                      Lane 2: 293T



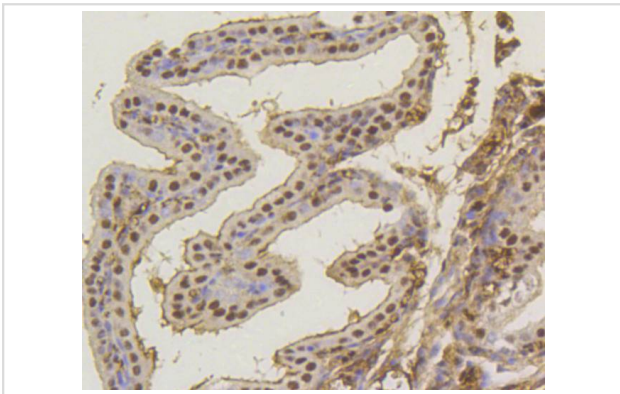
Immunohistochemical analysis of paraffin-embedded mouse testis tissue using anti-ASH2L antibody. Counter stained with hematoxylin.



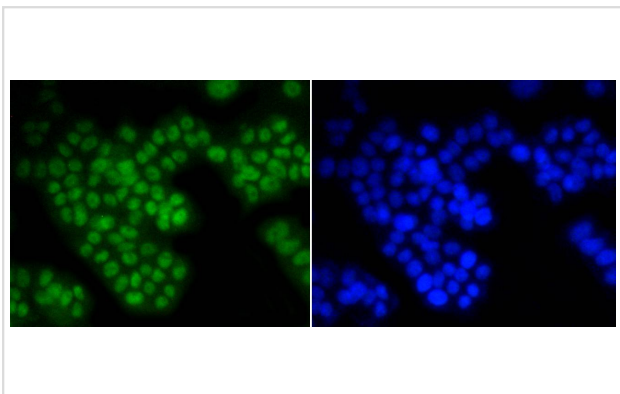
Immunohistochemical analysis of paraffin-embedded mouse colon tissue using anti-ASH2L antibody. Counter stained with hematoxylin.



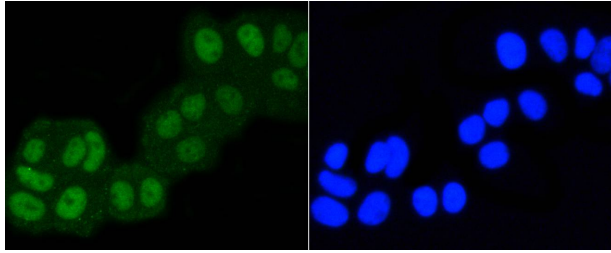
Immunohistochemical analysis of paraffin-embedded mouse ovary tissue using anti-ASH2L antibody. Counter stained with hematoxylin.



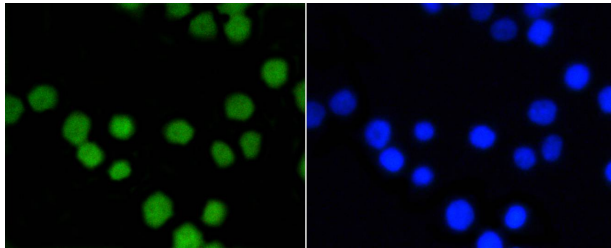
Immunohistochemical analysis of paraffin-embedded mouse placenta tissue using anti-ASH2L antibody. Counter stained with hematoxylin.



ICC staining ASH2L in PC12 cells (green). The nuclear counter stain is DAPI (blue). Cells were fixed in paraformaldehyde, permeabilised with 0.25% Triton X100/PBS.



ICC staining ASH2L in MCF-7 cells (green). The nuclear counter stain is DAPI (blue). Cells were fixed in paraformaldehyde, permeabilised with 0.25% Triton X100/PBS.



ICC staining ASH2L in CRC cells (green). Cells were fixed in paraformaldehyde, permeabilised with 0.25% Triton X100/PBS.

## Background

The human ASH2L gene encodes a 628 amino acid protein known as ASH2L1, or isoform 1, which contains a nuclear localization signal and PHD finger motif, suggesting that the gene product functions as a transcription regulator. Alternative splicing results in a shorter isoform 2, designated ASH2L2, which is missing the first 94 amino acid residues found in ASH2L1. Human ASH2L proteins are 60% homologous to *Drosophila ash2*, which positively regulates expression of certain genes in early development, and contain similar, but not identical, domains, including a zinc finger motif. ASH2L is highly expressed in fetal liver, testis and leukemia cell lines with erythroid and megakaryocytic potential, such as K562, He1 and Dami. Differentiation inducers (e.g. phorbol ester and hemin) cause different expression patterns in these cells lines, suggesting that ASH2L plays a role in hematopoiesis and is associated with particular types of leukemia.

## References

Note: This product is for in vitro research use only