

IgG4 Rabbit mAb

Catalog No: #48893

Package Size: #48893-1 50ul #48893-2 100ul

Orders: order@signalwayantibody.comSupport: tech@signalwayantibody.com

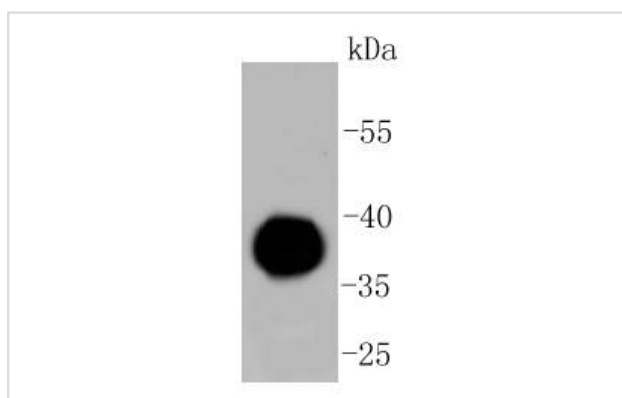
Description

Product Name	IgG4 Rabbit mAb
Host Species	Recombinant Rabbit
Clonality	Monoclonal antibody
Clone No.	ST05-12
Purification	ProA affinity purified
Applications	WB, IHC
Species Reactivity	Hu
Immunogen Description	recombinant protein
Other Names	Ig gamma 4 chain C region antibody IGHG4 antibody Immunoglobulin heavy constant gamma 4 (G4m marker) antibody MGC117419 antibody
Accession No.	Swiss-Prot#:P01861
Uniprot	P01861
Calculated MW	36 kDa
Formulation	1*TBS (pH7.4), 1%BSA, 40%Glycerol. Preservative: 0.05% Sodium Azide.
Storage	Store at -20°C

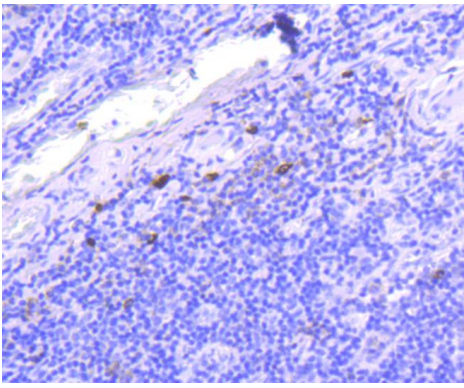
Application Details

WB: 1:1,000-5,000 IHC: 1:50-1:200

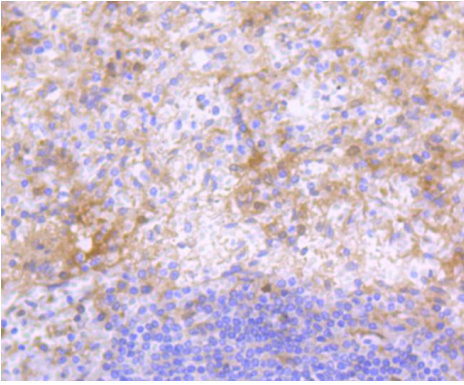
Images



Western blot analysis of IgG4 on human plasma lysates using anti-IgG4 antibody at 1/1,000 dilution.



Immunohistochemical analysis of paraffin-embedded human tonsil tissue using anti-IgG4 antibody. Counter stained with hematoxylin.



Immunohistochemical analysis of paraffin-embedded human spleen tissue using anti-IgG4 antibody. Counter stained with hematoxylin.

Background

The regions of relatively constant sequence beyond the variable regions of immunoglobulins are termed constant regions (C regions) and are present in both the heavy and light chains. With very few exceptions, the sites of attachment for carbohydrates on immunoglobulins are located in these C regions. These regions also function to hold the variable regions together by using the disulfide bond between them. The C regions facilitate interaction with the antigen by increasing the maximum rotation of the immunoglobulin arms. Several studies have shown that a large population of patients with recurrent respiratory tract infection have low IgG4 concentrations.

References

Note: This product is for in vitro research use only