

TIF1 $\alpha$  Polyclonal Antibody

Catalog No: #41498

Package Size: #41498-1 50ul #41498-2 100ul

Orders: [order@signalwayantibody.com](mailto:order@signalwayantibody.com)Support: [tech@signalwayantibody.com](mailto:tech@signalwayantibody.com)

## Description

Product Name	TIF1 $\alpha$ Polyclonal Antibody
Host Species	Rabbit
Clonality	Polyclonal
Purification	The antibody was affinity-purified from rabbit antiserum by affinity-chromatography using epitope-specific immunogen.
Applications	WB IHC ELISA
Species Reactivity	Hu Ms
Specificity	TIF1 $\alpha$ Polyclonal Antibody detects endogenous levels of TIF1 $\alpha$ protein.
Immunogen Type	peptide
Immunogen Description	Synthesized peptide derived from the C-terminal region of human TIF1 $\alpha$ .
Target Name	TIF1 $\alpha$
Other Names	TRIM24; RNF82; TIF1; TIF1A; Transcription intermediary factor 1-alpha; TIF1-alpha; E3 ubiquitin-protein ligase TRIM24; RING finger protein 82; Tripartite motif-containing protein 24
Accession No.	Swiss-Prot: O15164NCBI Gene ID: 8805
Uniprot	O15164
GeneID	8805;
SDS-PAGE MW	117kd
Concentration	1mg/ml
Formulation	Liquid in PBS containing 50% glycerol, 0.5% BSA and 0.02% sodium azide.
Storage	Store at -20°C/1 year

## Application Details

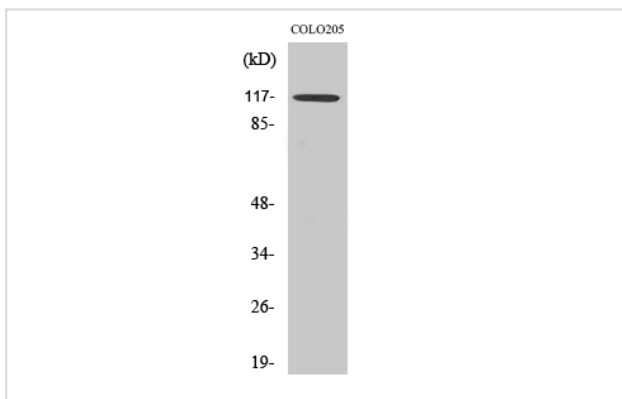
Western Blot: 1/500 - 1/2000.

Immunohistochemistry: 1/100 - 1/300.

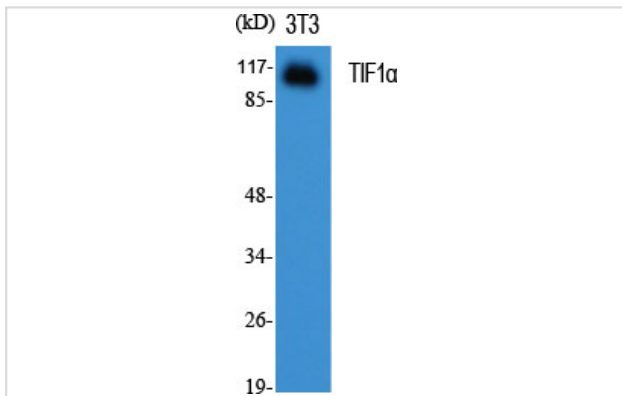
ELISA: 1/20000.

Not yet tested in other applications.

## Images



Western Blot analysis of COLO205 cells using TIF1α Polyclonal Antibody



Western Blot analysis of NIH-3T3 cells using TIF1α Polyclonal Antibody

Note: This product is for in vitro research use only