

## alpha+beta Synuclein Rabbit mAb

Catalog No: #48903

Package Size: #48903-1 50ul #48903-2 100ul

Orders: [order@signalwayantibody.com](mailto:order@signalwayantibody.com)Support: [tech@signalwayantibody.com](mailto:tech@signalwayantibody.com)

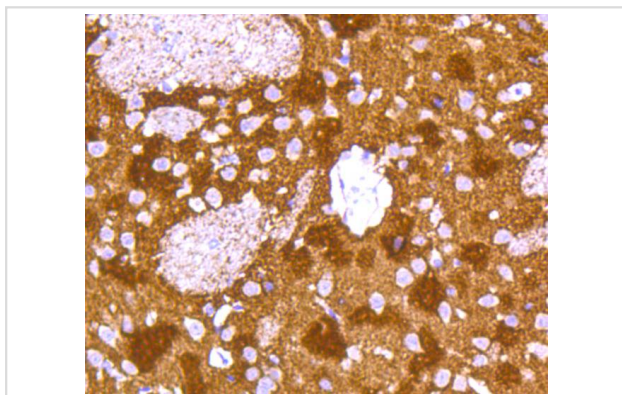
## Description

Product Name	alpha+beta Synuclein Rabbit mAb
Host Species	Recombinant Rabbit
Clonality	Monoclonal antibody
Clone No.	ST05-21
Purification	ProA affinity purified
Applications	WB, ICC/IF, IHC, FC
Species Reactivity	Hu, Ms, Rt
Immunogen Description	recombinant protein
Other Names	Alpha synuclein antibody Beta synuclein antibody NACP antibody Non A beta component of AD amyloid antibody PARK1 antibody PARK4 antibody PD1 antibody SNCA antibody SNCB antibody Synuclein alpha antibody Synuclein beta antibody
Accession No.	Swiss-Prot#:P37840
Uniprot	P37840
GeneID	6622;
Calculated MW	18 kDa
Formulation	1*TBS (pH7.4), 1%BSA, 40%Glycerol. Preservative: 0.05% Sodium Azide.
Storage	Store at -20°C

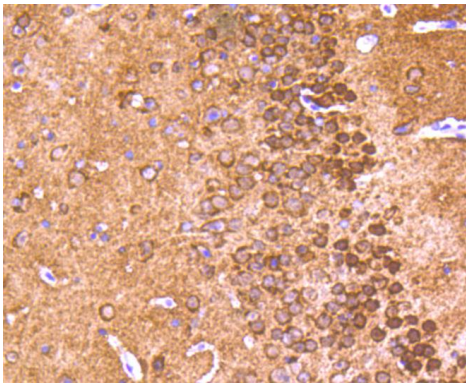
## Application Details

WB: 1:1,000-1:2,000 IHC: 1:50-1:200 ICC: 1:50-1:200FC: 1:50-1:100

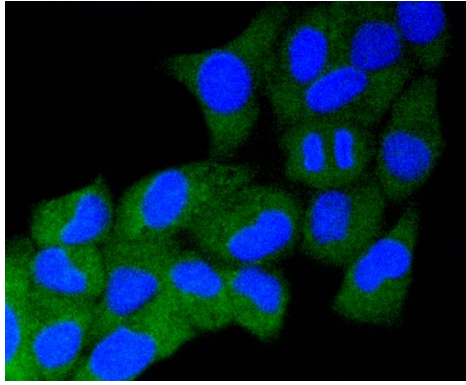
## Images



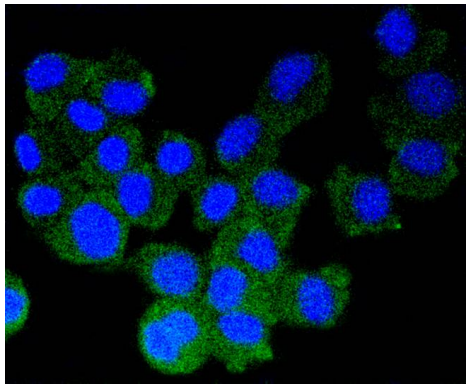
Immunohistochemical analysis of paraffin-embedded rat brain tissue using anti-alpha+beta Synuclein antibody. Counter stained with hematoxylin.



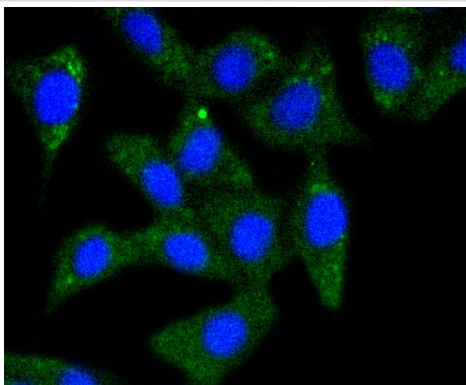
Immunohistochemical analysis of paraffin-embedded mouse brain tissue using anti-alpha+beta Synuclein antibody. Counter stained with hematoxylin.



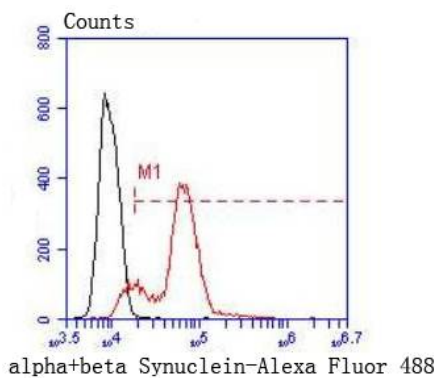
ICC staining alpha+beta Synuclein in HeLa cells (green). The nuclear counter stain is DAPI (blue). Cells were fixed in paraformaldehyde, permeabilised with 0.25% Triton X100/PBS.



ICC staining alpha+beta Synuclein in N2A cells (green). The nuclear counter stain is DAPI (blue). Cells were fixed in paraformaldehyde, permeabilised with 0.25% Triton X100/PBS.



ICC staining alpha+beta Synuclein in SH-SY-5Y cells (green). The nuclear counter stain is DAPI (blue). Cells were fixed in paraformaldehyde, permeabilised with 0.25% Triton X100/PBS.



Flow cytometric analysis of HeLa cells with alpha+beta Synuclein antibody at 1/50 dilution (red) compared with an unlabelled control (cells without incubation with primary antibody; black). Alexa Fluor 488-conjugated goat anti rabbit IgG was used as the secondary antibody.

## Background

---

The synucleins, including  $\alpha$ -synuclein (also designated NACP for nonamyloid component precursor),  $\beta$ -synuclein (also designated PNP 14 for phospho-neuroprotein 14) and  $\gamma$ -synuclein (also designated persyn or BCSG1 for breast cancer-specific gene 1) are presynaptic proteins abundant in neurons. Synucleins are predominantly expressed in the brain and are speculated to be involved in synaptic regulation and neuronal plasticity.  $\alpha$ -Synuclein, identified as a component of Alzheimers disease amyloid plaques, is localized to neuronal cell bodies and synapses. Coordinate expression of  $\alpha$ -synuclein and  $\beta$ -synuclein may be important during hematopoietic cell differentiation. A mutant form of  $\alpha$ -synuclein is found in patients with early onset Parkinsons disease.  $\gamma$ -Synuclein is associated with axonal pathology in Parkinsons disease.

## References

---

---

Note: This product is for in vitro research use only