

## TIMP-1 Polyclonal Antibody

Catalog No: #41499

Package Size: #41499-1 50ul #41499-2 100ul

Orders: order@signalwayantibody.com

Support: tech@signalwayantibody.com

## Description

Product Name	TIMP-1 Polyclonal Antibody
Host Species	Rabbit
Clonality	Polyclonal
Purification	The antibody was affinity-purified from rabbit antiserum by affinity-chromatography using epitope-specific immunogen.
Applications	WB ELISA IHC IF
Species Reactivity	Hu Ms Rt
Specificity	TIMP-1 Polyclonal Antibody detects endogenous levels of TIMP-1 protein.
Immunogen Description	Synthesized peptide derived from the Internal region of human TIMP-1.
Target Name	TIMP-1
Other Names	TIMP1; CLGI; TIMP; Metalloproteinase inhibitor 1; Erythroid-potentiating activity; EPA; Fibroblast collagenase inhibitor; Collagenase inhibitor; Tissue inhibitor of metalloproteinases 1; TIMP-1
Accession No.	Swiss-Prot: P01033NCBI Gene ID: 7076
Uniprot	P01033
GeneID	7076;
SDS-PAGE MW	24kd
Concentration	1mg/ml
Formulation	Liquid in PBS containing 50% glycerol, 0.5% BSA and 0.02% sodium azide.
Storage	Store at -20°C/1 year

## Application Details

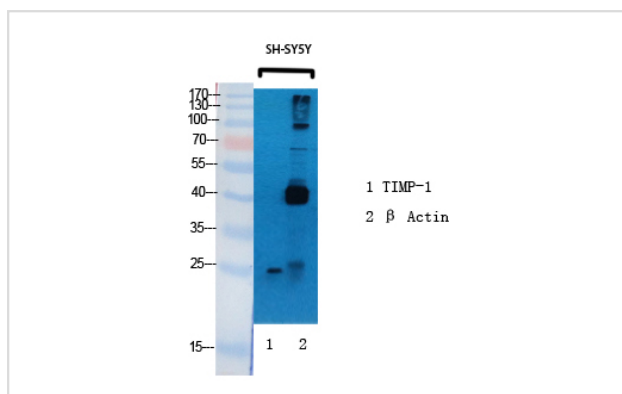
Western Blot: 1/500 - 1/2000.

IF: 1:50-200

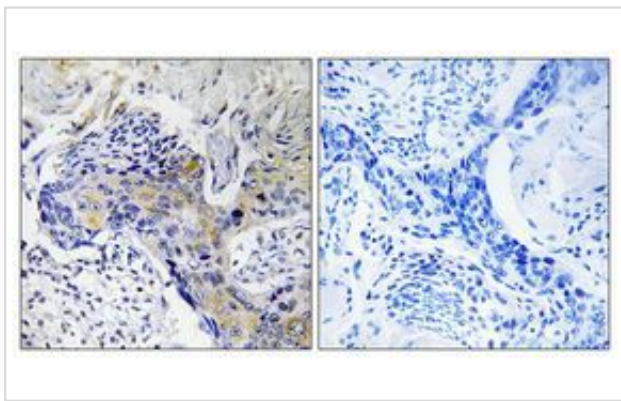
ELISA: 1/10000.

Not yet tested in other applications.

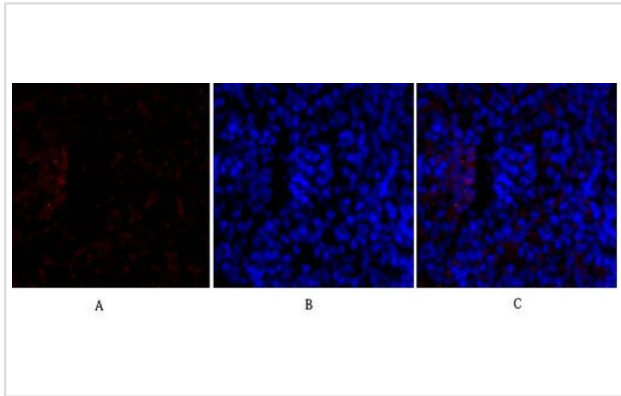
## Images



Western Blot analysis of SH-SY5Y cells using TIMP-1 Polyclonal Antibody



Immunohistochemical analysis of paraffin-embedded Human lung cancer. Antibody was diluted at 1:100(4° overnight). High-pressure and temperature Tris-EDTA,pH8.0 was used for antigen retrieval. Negative control (right) obtained from antibody was pre-absorbed by immunogen peptide.



Immunofluorescence analysis of rat-spleen tissue. 1, TIMP-1 Polyclonal Antibody (red) was diluted at 1:200(4°C, overnight). 2, Cy3 labeled Secondary antibody was diluted at 1:300(room temperature, 50min). 3, Picture B: DAPI (blue) 10min. Picture A: Target. Picture B: DAPI. Picture C: merge of A+B

---

Note: This product is for in vitro research use only