

## TIMP-2 Polyclonal Antibody

Catalog No: #41500

Package Size: #41500-1 50ul #41500-2 100ul

Orders: [order@signalwayantibody.com](mailto:order@signalwayantibody.com)Support: [tech@signalwayantibody.com](mailto:tech@signalwayantibody.com)

## Description

|                       |   |
|-----------------------|---|
| Product Name          | TIMP-2 Polyclonal Antibody  |
| Host Species          | Rabbit  |
| Clonality             | Polyclonal  |
| Purification          | The antibody was affinity-purified from rabbit antiserum by affinity-chromatography using epitope-specific immunogen. |
| Applications          | WB IHC IF ELISA   |
| Species Reactivity    | Hu Ms Rt  |
| Specificity           | TIMP-2 Polyclonal Antibody detects endogenous levels of TIMP-2 protein.   |
| Immunogen Type        | peptide   |
| Immunogen Description | Synthesized peptide derived from the Internal region of human TIMP-2.   |
| Target Name           | TIMP-2  |
| Other Names           | TIMP2; Metalloproteinase inhibitor 2; CSC-21K; Tissue inhibitor of metalloproteinases 2; TIMP-2                       |
| Accession No.         | Swiss-Prot: P16035NCBI Gene ID: 7077  |
| Uniprot               | P16035  |
| GeneID                | 7077;   |
| SDS-PAGE MW           | 30kd  |
| Concentration         | 1mg/ml  |
| Formulation           | Liquid in PBS containing 50% glycerol, 0.5% BSA and 0.02% sodium azide.   |
| Storage               | Store at -20°C/1 year   |

## Application Details

Western Blot: 1/500 - 1/2000.

Immunohistochemistry: 1/100 - 1/300.

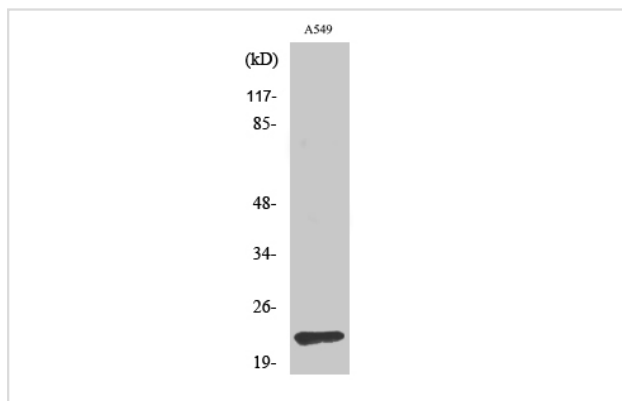
Immunofluorescence: 1/200 - 1/1000.

ELISA: 1/40000.

Not yet tested in other applications.

## Images

Western Blot analysis of A549 cells using TIMP-2 Polyclonal Antibody



Note: This product is for in vitro research use only