

BCL2A1 Rabbit mAb

Catalog No: #48932

Package Size: #48932-1 50ul #48932-2 100ul

Orders: order@signalwayantibody.com

Support: tech@signalwayantibody.com

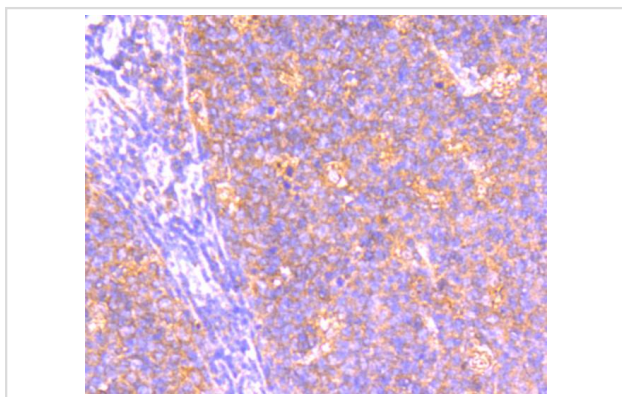
Description

Product Name	BCL2A1 Rabbit mAb
Host Species	Recombinant Rabbit
Clonality	Monoclonal antibody
Clone No.	SC05-42
Purification	ProA affinity purified
Applications	WB, IHC, FC
Species Reactivity	Hu, Ms, Rt
Immunogen Description	recombinant protein
Other Names	ACC 1 antibody ACC 2 antibody B2LA1_HUMAN antibody Bcl 2 related protein A1 antibody Bcl-2-like protein 5 antibody Bcl-2-related protein A1 antibody BCL2 related protein A1 antibody Bcl2-L-5 antibody BCL2A1 antibody BCL2L5 antibody BFL1 antibody GRS antibody HBPA1 antibody Hematopoietic BCL2 related protein A1 antibody Hemopoietic specific early response protein antibody Hemopoietic-specific early response protein antibody Protein BFL 1 antibody Protein BFL-1 antibody Protein GRS antibody
Accession No.	Swiss-Prot#:Q16548
Uniprot	Q16548
GeneID	597;
Calculated MW	20 kDa
Formulation	1*TBS (pH7.4), 1%BSA, 40%Glycerol. Preservative: 0.05% Sodium Azide.
Storage	Store at -20°C

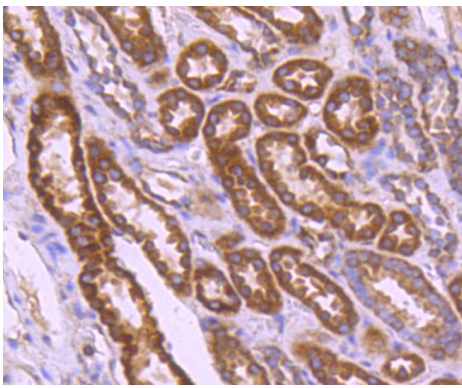
Application Details

WB: 1:1,000IHC:1:50-1:200 FC: 1:50-1:100

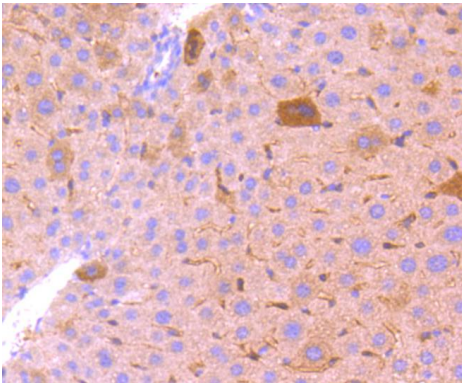
Images



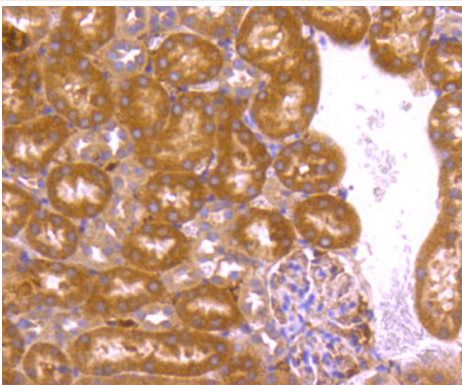
Immunohistochemical analysis of paraffin-embedded human tonsil tissue using anti-BCL2A1 antibody. Counter stained with hematoxylin.



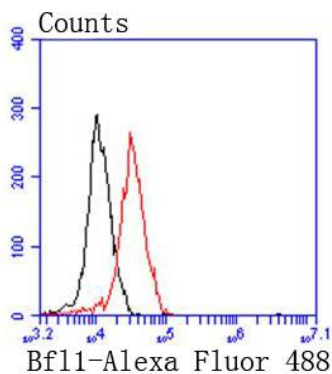
Immunohistochemical analysis of paraffin-embedded human kidney tissue using anti- BCL2A1 antibody. Counter stained with hematoxylin.



Immunohistochemical analysis of paraffin-embedded mouse liver tissue using anti- BCL2A1 antibody. Counter stained with hematoxylin.



Immunohistochemical analysis of paraffin-embedded mouse kidney tissue using anti- BCL2A1 antibody. Counter stained with hematoxylin.



Flow cytometric analysis of 293 cells with Bfl1(BCL2A1) antibody at 1/50 dilution (red) compared with an unlabelled control (cells without incubation with primary antibody; black). Alexa Fluor 488-conjugated goat anti rabbit IgG was used as the secondary antibody.

Background

The Bcl-2 family of proteins is characterized by its ability to modulate cell death under a broad range of physiological conditions. Bcl-2 and Bcl-xL function to inhibit apoptosis while other members of the Bcl-2 family, Bax, Bad, Bak and Bcl-xS, oppose death-suppressing effects. An additional member of the family, A1 (also designated Bfl-1), dimerizes with both Bcl-2 and Bax and has been identified as a hematopoietic- specific, early inducible gene. While A1 demonstrates life promoting properties similar to those of Bcl-2, its function may be more temporally regulated during myeloid differentiation and dependent on additional growth stimuli to confer its life promoting properties. A1 is abundantly expressed in bone marrow and at low levels in other tissues. There is evidence that a correlation exists between a high expression of the A1 gene product and stomach cancer.

References

Note: This product is for in vitro research use only