

## TIMP-4 Polyclonal Antibody

Catalog No: #41502

Package Size: #41502-1 50ul #41502-2 100ul

Orders: [order@signalwayantibody.com](mailto:order@signalwayantibody.com)Support: [tech@signalwayantibody.com](mailto:tech@signalwayantibody.com)

## Description

Product Name	TIMP-4 Polyclonal Antibody
Host Species	Rabbit
Clonality	Polyclonal
Purification	The antibody was affinity-purified from rabbit antiserum by affinity-chromatography using epitope-specific immunogen.
Applications	WB IHC ELISA
Species Reactivity	Hu Ms Rt
Specificity	TIMP-4 Polyclonal Antibody detects endogenous levels of TIMP-4 protein.
Immunogen Type	peptide
Immunogen Description	Synthesized peptide derived from the C-terminal region of human TIMP-4.
Target Name	TIMP-4
Other Names	TIMP4; Metalloproteinase inhibitor 4; Tissue inhibitor of metalloproteinases 4; TIMP-4
Accession No.	Swiss-Prot: Q99727NCBI Gene ID: 7079
Uniprot	Q99727
GeneID	7079;
SDS-PAGE MW	26kd
Concentration	1mg/ml
Formulation	Liquid in PBS containing 50% glycerol, 0.5% BSA and 0.02% sodium azide.
Storage	Store at -20°C/1 year

## Application Details

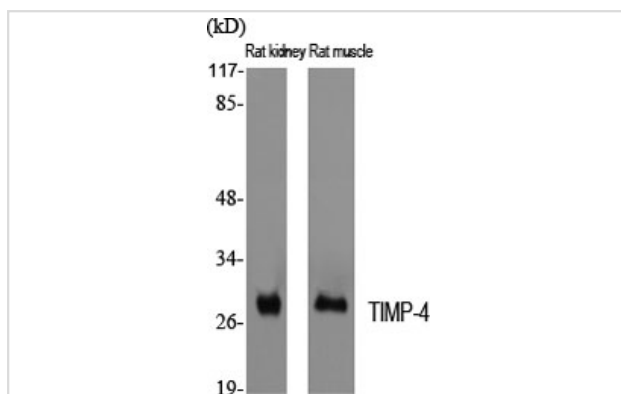
Western Blot: 1/500 - 1/2000.

Immunohistochemistry: 1/100 - 1/300.

ELISA: 1/20000.

Not yet tested in other applications.

## Images



Western Blot analysis of RAT-KIDNEY RAT-MUSCLE cells using TIMP-4 Polyclonal Antibody

---

Note: This product is for in vitro research use only