

Phospho-ATF2(T71) Rabbit mAb

Catalog No: #13380



Package Size: #13380-1 50ul #13380-2 100ul

Orders: order@signalwayantibody.com

Support: tech@signalwayantibody.com

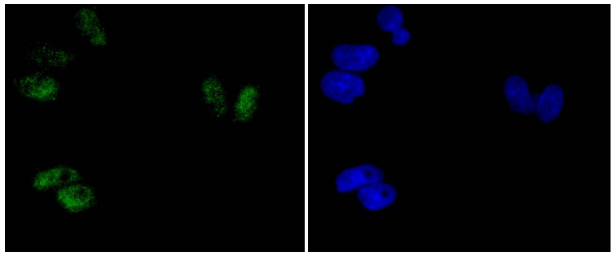
Description

Product Name	Phospho-ATF2(T71) Rabbit mAb
Host Species	Rabbit
Clonality	Monoclonal
Clone No.	SC05-90
Purification	ProA affinity purified
Applications	WB, ICC/IF, IP
Species Reactivity	Hu
Immunogen Description	Synthetic phospho-peptide corresponding to residues surrounding Thr71 of human ATF2
Other Names	Activating transcription factor 2 antibody Activating transcription factor 2 splice variant ATF2 var2 antibody ATF 2 antibody Atf-2 antibody Atf2 antibody ATF2 protein antibody ATF2_HUMAN antibody cAMP Response Element Binding Protein 2 antibody cAMP response element binding protein CRE BP1 antibody cAMP response element-binding protein CRE-BP1 antibody cAMP responsive element binding protein 2, formerly antibody cAMP-dependent transcription factor ATF-2 antibody cAMP-responsive element-binding protein 2 antibody CRE BP1 antibody CRE-BP antibody CREB 2 antibody CREB-2 antibody CREB2 antibody CREBP1 antibody Cyclic AMP dependent transcription factor ATF 2 antibody Cyclic AMP-dependent transcription factor ATF-2 antibody Cyclic AMP-responsive element-binding protein 2 antibody D130078H02Rik antibody D18875 antibody HB 16 antibody HB16 antibody Histone acetyltransferase ATF2 antibody MGC105211 antibody MGC105222 antibody MGC111558 antibody MGC142504 antibody mXBP antibody MXBP protein antibody Tg(Gzma-Klra1)7Wum antibody TREB 7 antibody TREB7 antibody
Accession No.	Swiss-Prot#:Q07954
Uniprot	Q07954
GeneID	4035;
Calculated MW	55 kDa
Formulation	1*TBS (pH7.4), 1%BSA, 40%Glycerol. Preservative: 0.05% Sodium Azide.
Storage	Store at -20°C

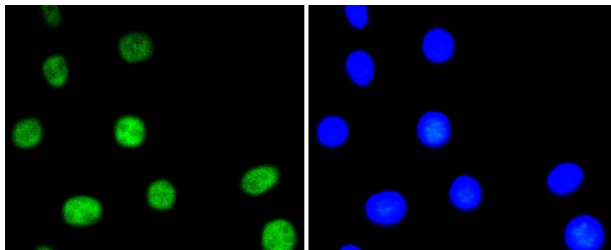
Application Details

WB: 1:1,000 ICC: 1:50-1:200

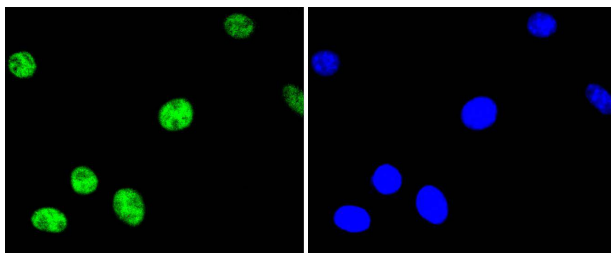
Images



ICC staining phospho-ATF2(T71) in HeLa cells (green). The nuclear counter stain is DAPI (blue). Cells were fixed in paraformaldehyde, permeabilised with 0.25% Triton X100/PBS.



ICC staining phospho-ATF2(T71) in NIH/3T3 cells (green). The nuclear counter stain is DAPI (blue). Cells were fixed in paraformaldehyde, permeabilised with 0.25% Triton X100/PBS.



ICC staining phospho-ATF2(T71) in SH-SY-5Y cells (green). The nuclear counter stain is DAPI (blue). Cells were fixed in paraformaldehyde, permeabilised with 0.25% Triton X100/PBS.

Background

Eukaryotic gene transcription is regulated by sequence-specific transcription factors which bind modular cis-acting promoter and enhancer elements. The ATF/CREB transcription factor family binds the palindromic cAMP response element (CRE) octanucleotide TGACGTCA. The ATF/CREB family includes CREB-1, CREB-2 (also designated ATF-4), ATF-1, ATF-2 and ATF-3. This family of proteins contain highly divergent N-terminal domains, but share a C-terminal leucine zipper for dimerization and DNA binding. ATF-2 forms homodimers and heterodimers with c-Jun to initiate CRE-dependent transcription. Phosphorylation of ATF-2 at Thr 69 and Thr 71 by stress-activated kinases is necessary for transcriptional activation. Myc also induces phosphorylation of ATF-2 at Thr 69 and Thr 71 to prolong the half-life of ATF-2. ATF-2 also functions as a histone acetyltransferase (HAT) by specifically acetylating histones H2B and H4 in vitro. The gene encoding human ATF-2 maps to chromosome 2q31.1.

References

Note: This product is for in vitro research use only