

Phospho-Estrogen Receptor alpha(S118) Rabbit mAb

Catalog No: #13382



Package Size: #13382-1 50ul #13382-2 100ul

Orders: order@signalwayantibody.com

Support: tech@signalwayantibody.com

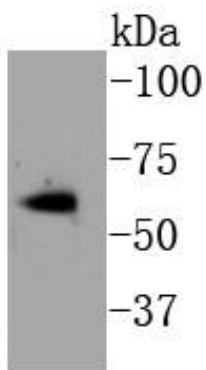
Description

Product Name	Phospho-Estrogen Receptor alpha(S118) Rabbit mAb
Host Species	Rabbit
Clonality	Monoclonal
Clone No.	SC05-87
Purification	ProA affinity purified
Applications	WB, ICC/IF, IHC
Species Reactivity	Hu
Immunogen Description	Synthetic phospho-peptide corresponding to residues surrounding Ser118 of human Estrogen Receptor alpha.
Other Names	DKFZp686N23123 antibody ER alpha antibody ER antibody ER-alpha antibody Era antibody ESR antibody ESR1 antibody ESR1_HUMAN antibody ESRA antibody Estradiol receptor antibody Estrogen nuclear receptor alpha antibody Estrogen receptor 1 antibody Estrogen receptor alpha 3*,4,5,6,7*/822 isoform antibody Estrogen receptor alpha antibody Estrogen receptor alpha delta 3*,4,5,6,7*,8*/941 isoform antibody Estrogen receptor alpha delta 3*,4,5,6,7*/819 2 isoform antibody Estrogen receptor alpha delta 4 +49 isoform antibody Estrogen receptor alpha delta 4*,5,6,7*/654 isoform antibody Estrogen receptor alpha delta 4*,5,6,7,8*/901 isoform antibody Estrogen receptor alpha E1 E2 1 2 antibody Estrogen receptor alpha E1 N2 E2 1 2 antibody Estrogen receptor antibody ESTRR antibody NR3A1 antibody Nuclear receptor subfamily 3 group A member 1 antibody
Accession No.	Swiss-Prot#:P03372
Uniprot	P03372
GeneID	2099;
Calculated MW	66 kDa
Formulation	1*TBS (pH7.4), 1%BSA, 40%Glycerol. Preservative: 0.05% Sodium Azide.
Storage	Store at -20°C

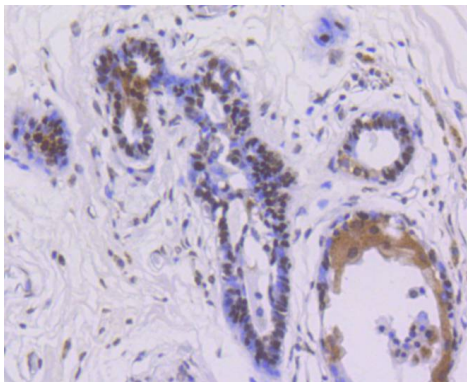
Application Details

WB: 1:1,000 IHC: 1:50-1:200 ICC: 1:50-1:200

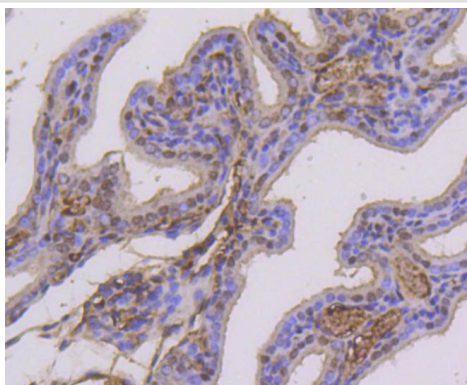
Images



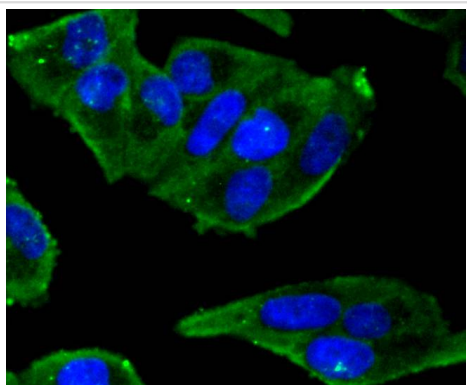
Western blot analysis of Estrogen Receptor alpha (phospho S118) on MCF-7 cell lysates using anti-phospho-Estrogen Receptor alpha (S118) antibody at 1/1,000 dilution.



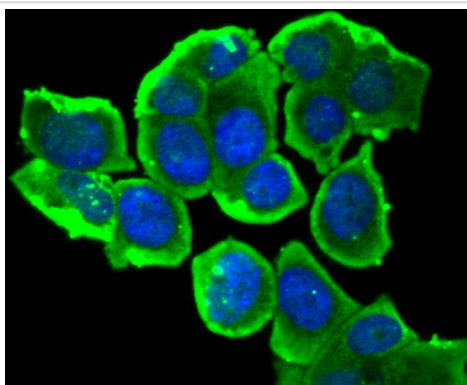
Immunohistochemical analysis of paraffin-embedded human breast carcinoma tissue using anti-phospho-Estrogen Receptor alpha (S118) antibody. Counter stained with hematoxylin.



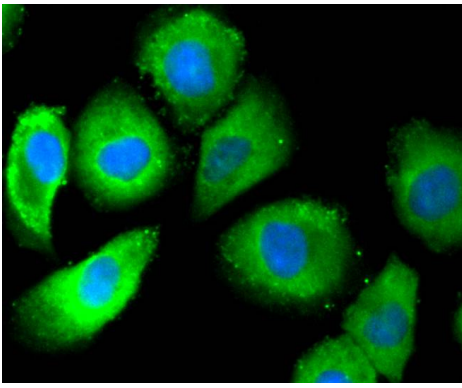
Immunohistochemical analysis of paraffin-embedded mouse placenta tissue using anti-phospho-Estrogen Receptor alpha (S118) antibody. Counter stained with hematoxylin.



ICC staining phospho-Estrogen Receptor alpha (S118) in HeLa cells (green). The nuclear counter stain is DAPI (blue). Cells were fixed in paraformaldehyde, permeabilised with 0.25% Triton X100/PBS.



ICC staining phospho-Estrogen Receptor alpha (S118) in MCF-7 cells (green). The nuclear counter stain is DAPI (blue). Cells were fixed in paraformaldehyde, permeabilised with 0.25% Triton X100/PBS.



ICC staining phospho-Estrogen Receptor alpha(S118) in HUVEC cells (green). The nuclear counter stain is DAPI (blue). Cells were fixed in paraformaldehyde, permeabilised with 0.25% Triton X100/PBS.

Background

Estrogen receptor alpha (ERa, ER, ESR, ESRA, Era, NR3A1, estrogen receptor 1) is a ligand-activated transcription factor composed of several domains important for hormone binding, DNA binding and activation of transcription. Alternative splicing results in several ERa mRNA transcripts, which differ primarily in their 5' untranslated regions. ERa undergoes phosphorylation in response to estradiol binding. Human ERa is predominately phosphorylated on Ser 118 and to a lesser extent on Ser 104 and Ser 106. In response to activation of the mitogen-activated protein kinase pathway, phosphorylation occurs on Ser 118 and Ser 167. These serine residues are all located within the activation function 1 region of the N-terminal domain of ERa. In contrast, activation of protein kinase A increases the phosphorylation of Ser 236, which is located in the DNA-binding domain. Src kinase-dependent Tyr 537 phosphorylation may enhance estrogen binding to ERa. Mutation of Tyr 537 of the human ERa produces receptors having a range of constitutive activity.

References

Note: This product is for in vitro research use only