

PI3-kinase p110 subunit beta Rabbit mAb

Catalog No: #48949



Package Size: #48949-1 50ul #48949-2 100ul

Orders: order@signalwayantibody.comSupport: tech@signalwayantibody.com

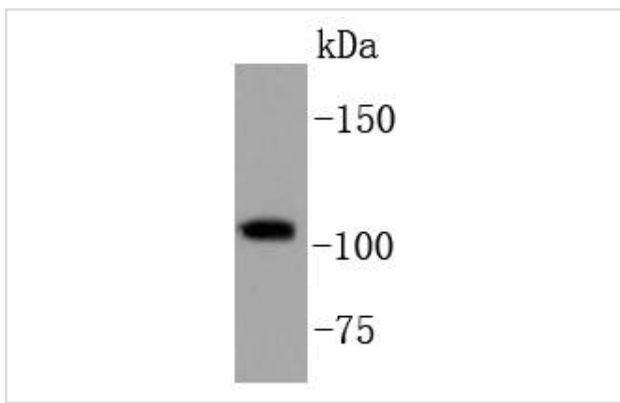
Description

Product Name	PI3-kinase p110 subunit beta Rabbit mAb
Host Species	Recombinant Rabbit
Clonality	Monoclonal antibody
Clone No.	SC0580
Purification	ProA affinity purified
Applications	WB, IP, FC
Species Reactivity	Hu
Immunogen Description	recombinant protein
Other Names	5-bisphosphate 3-kinase 110 kDa catalytic subunit beta antibody 5-bisphosphate 3-kinase catalytic subunit beta isoform antibody DKFZp779K1237 antibody MGC133043 antibody OTTHUMP00000216901 antibody OTTHUMP00000216904 antibody p110 BETA antibody p110Beta antibody Phosphatidylinositol 3 kinase catalytic beta polypeptide antibody Phosphatidylinositol 4 5 bisphosphate 3 kinase 110 kDa catalytic subunit beta antibody Phosphatidylinositol 4 5 bisphosphate 3 kinase catalytic subunit beta isoform antibody Phosphatidylinositol-4 antibody Phosphoinositide 3 kinase catalytic beta polypeptide antibody PI3 kinase p110 subunit beta antibody PI3-kinase subunit beta antibody PI3K antibody PI3K beta antibody PI3K-beta antibody PI3Kbeta antibody PI3KCB antibody PIK3C1 antibody Pik3cb antibody PK3CB_HUMAN antibody PtdIns 3 kinase p110 antibody PtdIns-3-kinase subunit beta antibody PtdIns-3-kinase subunit p110-beta antibody
Accession No.	Swiss-Prot#:P42338
Uniprot	P42338
GeneID	5291;
Calculated MW	123 kDa
Formulation	1*TBS (pH7.4), 1%BSA, 40%Glycerol. Preservative: 0.05% Sodium Azide.
Storage	Store at -20°C

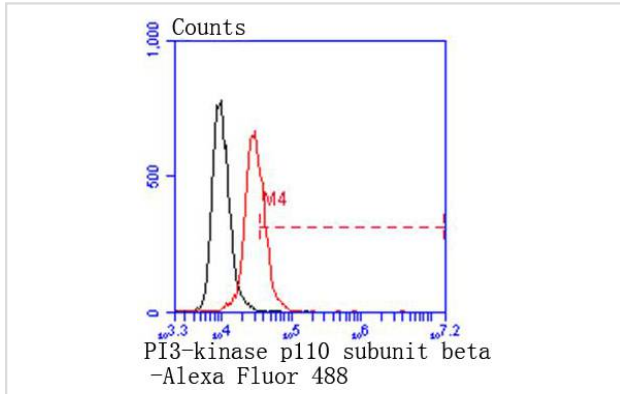
Application Details

WB: 1:1,000FC: 1:50-1:100

Images



Western blot analysis of PI3-kinase p110 subunit beta on HeLa cell lysates using anti-PI3-kinase p110 subunit beta antibody at 1/1,000 dilution.



Flow cytometric analysis of HeLa cells with PI3-kinase p110 subunit beta antibody at 1/50 dilution (red) compared with an unlabelled control (cells without incubation with primary antibody; black). Alexa Fluor 488-conjugated goat anti rabbit IgG wa secondary

Background

Phosphatidylinositol 3-kinase (PI 3-kinase) is composed of p85 and p110 subunits. p85 lacks PI 3-kinase activity and acts as an adapter, coupling p110 to activated protein tyrosine kinase. Two forms of p85 have been described (p85 α and p85 β), each possessing one SH3 and two SH2 domains. Various p110 isoforms have been identified. p110 α and p110 β interact with p85 α , and p110 α has also been shown to interact with p85 β in vitro. p110 expression is restricted to white blood cells. It has been shown to bind p85 α and β , but it apparently does not phosphorylate these subunits. p110 δ seems to have the capacity to autophosphorylate. p110 γ does not interact with the p85 subunits. It has been shown to be activated by α and β γ heterotrimeric G proteins.

References

Note: This product is for in vitro research use only