

MelanA Rabbit mAb

Catalog No: #48961

Package Size: #48961-1 50ul #48961-2 100ul

Orders: order@signalwayantibody.com

Support: tech@signalwayantibody.com

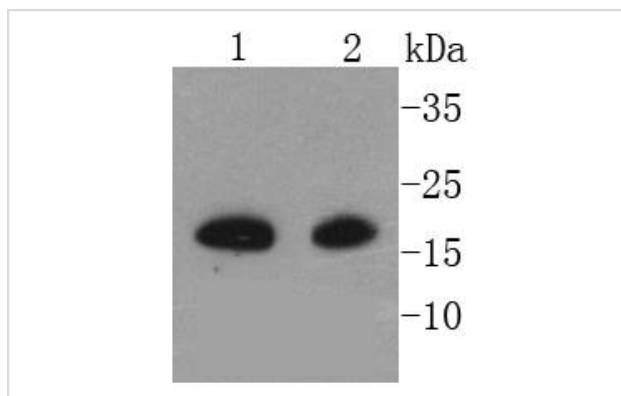
Description

Product Name	MelanA Rabbit mAb
Host Species	Recombinant Rabbit
Clonality	Monoclonal antibody
Clone No.	SC56-02
Purification	ProA affinity purified
Applications	WB, IHC, FC
Species Reactivity	Hu
Immunogen Description	recombinant protein
Other Names	Antigen LB39 AA antibody Antigen LB39-AA antibody Antigen SK29 AA antibody Antigen SK29-AA antibody MAR1_HUMAN antibody MART 1 antibody MART-1 antibody MART1 antibody Melan A antibody Melan A protein antibody Melanoma antigen recognized by T cells 1 antibody Melanoma antigen recognized by T-cells 1 antibody MLAN A antibody MLANA antibody OTTHUMP00000021036 antibody OTTHUMP00000021037 antibody OTTHUMP00000021038 antibody Protein Melan-A antibody
Accession No.	Swiss-Prot#:Q16655
Uniprot	Q16655
GeneID	2315;
Calculated MW	20 kDa
Formulation	1*TBS (pH7.4), 1%BSA, 40%Glycerol. Preservative: 0.05% Sodium Azide.
Storage	Store at -20°C

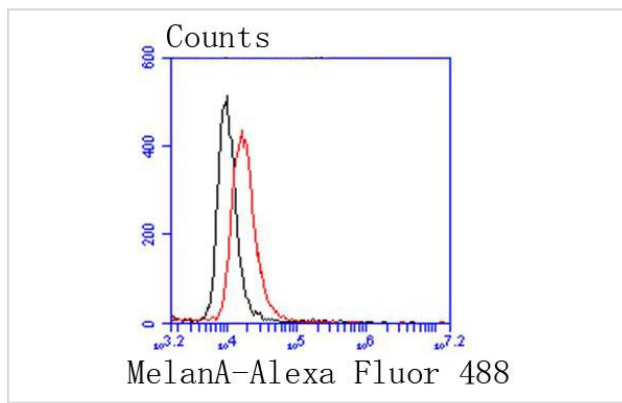
Application Details

WB: 1:1,000-1:2,000 IHC: 1:50-1:200FC: 1:50-1:100

Images



Western blot analysis of MelanA on different lysates using anti-MelanA antibody at 1/1,000 dilution. Positive control:
Lane 1: Melanoma Lane 2: B16-F1



Flow cytometric analysis of B16-F1 cells with MelanA antibody at 1/50 dilution (red) compared with an unlabelled control (cells without incubation with primary antibody; black). Alexa Fluor 488-conjugated goat anti rabbit IgG was used as the second antibody

Background

Melanoma-associated antigens recognized by cytotoxic T lymphocytes (CTL) have been grouped into three categories: melanocyte differentiation antigens, cancer/testis-specific antigens and mutated or aberrantly expressed antigens. Many of these antigens consist of peptides that are presented to T cells by HLA molecules; they represent potential targets for cancer immunotherapy. Melan-A (also designated MART-1) is a melanocyte differentiation antigen that is specific to melanomas, melanocyte cell lines and retina. Melan-A peptide is recognized by most HLA-A2-restricted tumor-specific tumor-infiltrating lymphocytes in patients with melanoma. Antimelanoma cytotoxic T lymphocytes can be generated with a Melan-A peptide, implicating Melan-A as a potential candidate for antigen-specific immunotherapy in melanoma patients.

References

Note: This product is for in vitro research use only