

CD13 Rabbit mAb

Catalog No: #48974



Package Size: #48974-1 50ul #48974-2 100ul

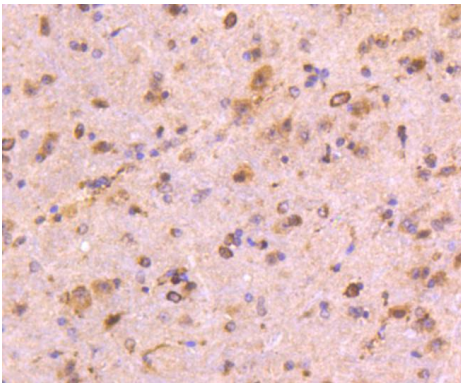
Orders: order@signalwayantibody.com  
Support: tech@signalwayantibody.com

Description	
Product Name	CD13 Rabbit mAb
Host Species	Recombinant Rabbit
Clonality	Monoclonal antibody
Clone No.	SC70-01
Purification	ProA affinity purified
Applications	WB, ICC, IHC, IP
Species Reactivity	Hu, Ms, Rt
Immunogen Description	recombinant protein
Other Names	Alanyl (membrane) aminopeptidase antibody Alanyl aminopeptidase antibody Aminopeptidase M antibody Aminopeptidase N antibody AMPN_HUMAN antibody ANPEP antibody AP M antibody AP N antibody AP-M antibody AP-N antibody APN antibody CD 13 antibody CD13 antibody CD13 antigen antibody gp150 antibody hAPN antibody LAP 1 antibody LAP1 antibody Microsomal aminopeptidase antibody Myeloid plasma membrane glycoprotein CD13 antibody p150 antibody PEPN antibody
Accession No.	Swiss-Prot#:P15144
Uniprot	P15144
GeneID	290;
Calculated MW	150 kDa
Formulation	1*TBS (pH7.4), 1%BSA, 40%Glycerol. Preservative: 0.05% Sodium Azide.
Storage	Store at -20°C

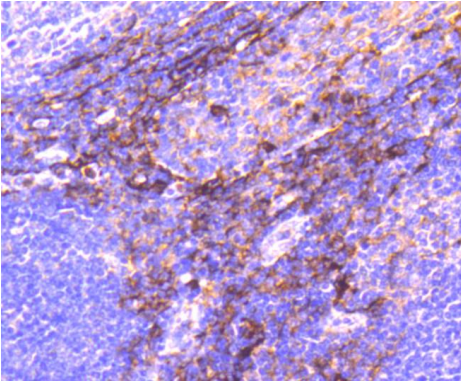
Application Details
WB: 1:1,000-5,000IHC: 1:50-1:200ICC: 1:100-1:500

Images

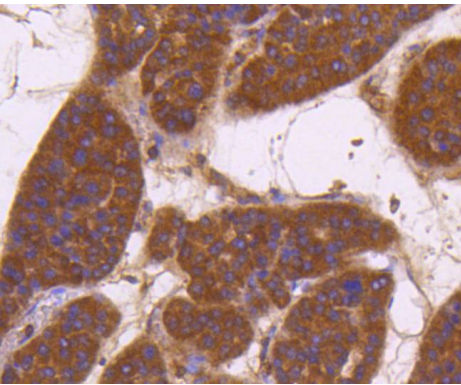
Western blot analysis of CD13 on different lysates using anti-CD13 antibody at 1/1,000 dilution. Positive control: Lane 1: THP-1 Lane 2: human heart Lane 3: U937



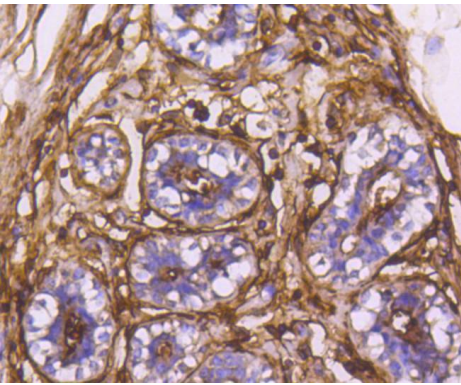
Immunohistochemical analysis of paraffin-embedded mouse brain tissue using anti-CD13 antibody. Counter stained with hematoxylin.



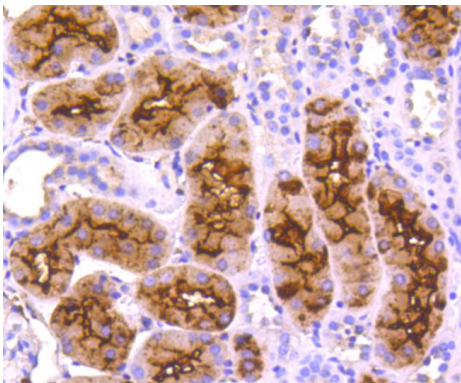
Immunohistochemical analysis of paraffin-embedded human tonsil tissue using anti-CD13 antibody. Counter stained with hematoxylin.



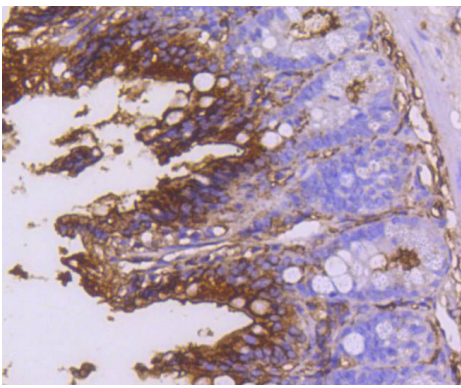
Immunohistochemical analysis of paraffin-embedded human liver cancer tissue using anti-CD13 antibody. Counter stained with hematoxylin.



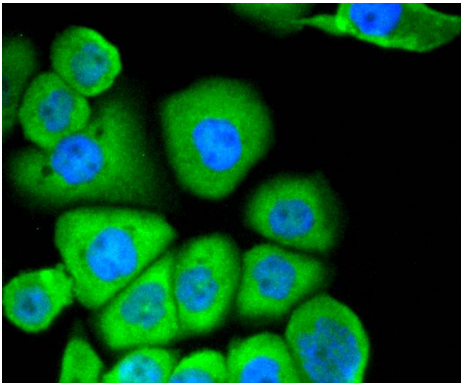
Immunohistochemical analysis of paraffin-embedded human breast tissue using anti-CD13 antibody. Counter stained with hematoxylin.



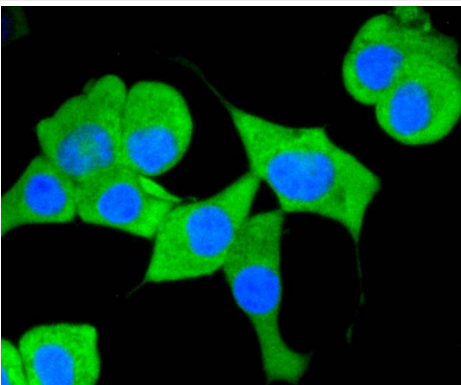
Immunohistochemical analysis of paraffin-embedded human kidney tissue using anti-CD13 antibody. Counter stained with hematoxylin.



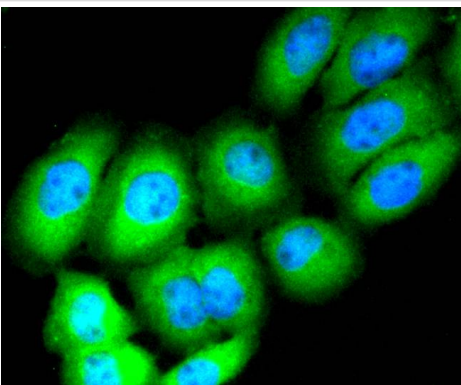
Immunohistochemical analysis of paraffin-embedded mouse colon tissue using anti-CD13 antibody. Counter stained with hematoxylin.



ICC staining CD13 in AGS cells (green). The nuclear counter stain is DAPI (blue). Cells were fixed in paraformaldehyde, permeabilised with 0.25% Triton X100/PBS.



ICC staining CD13 in SHG-44 cells (green). The nuclear counter stain is DAPI (blue). Cells were fixed in paraformaldehyde, permeabilised with 0.25% Triton X100/PBS.



ICC staining CD13 in LO2 cells (green). The nuclear counter stain is DAPI (blue). Cells were fixed in paraformaldehyde, permeabilised with 0.25% Triton X100/PBS.

## Background

CD13, or aminopeptidase N, is a type II transmembrane glycoprotein that is expressed on most cells of Myeloid origin, including monocytes, basophils, eosinophils, neutrophils and Myeloid leukemias. CD13 is also found on certain epithelial cells, fibroblasts and osteoclasts. CD13 acts as a zinc-binding metalloprotease that plays a role in digestion and may function in the inactivation of some regulatory peptides such as enkephalins. CD13 may play a role in the invasion of cancer cells by enhancing their invasive capacity and metastatic behavior. The activity of CD13 can be inactivated using specific inhibitors that evoke apoptosis of CD13-positive cancer cells. Basic fibroblast growth factor (bFGF) expression upregulates CD13 expression in human melanoma cells by activating both the Myeloid and the epithelial CD13 promoter.

## References

---

Note: This product is for in vitro research use only