

Sonic Hedgehog Protein/SHH(C-Product) Rabbit mAb

Catalog No: #48975

Package Size: #48975-1 50ul #48975-2 100ul

Orders: order@signalwayantibody.com

Support: tech@signalwayantibody.com

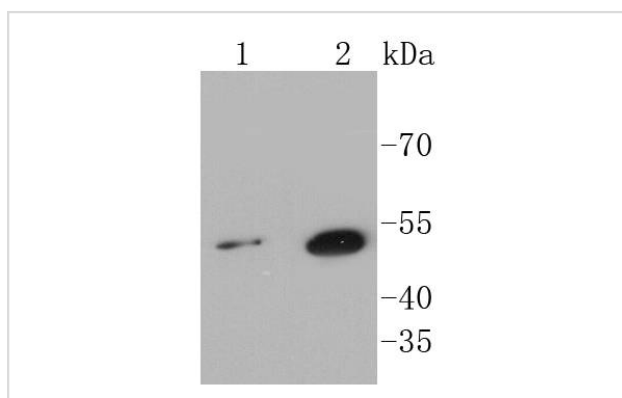
Description

Product Name	Sonic Hedgehog Protein/SHH(C-Product) Rabbit mAb
Host Species	Recombinant Rabbit
Clonality	Monoclonal antibody
Clone No.	SC05-28
Purification	ProA affinity purified
Applications	WB, ICC/IF, IHC, FC
Species Reactivity	Hu
Immunogen Description	recombinant protein
Other Names	HHG 1 antibody HHG-1 antibody HHG1 antibody HLP 3 antibody HLP3 antibody Holoprosencephaly 3 antibody HPE 3 antibody HPE3 antibody MCOPCB5 antibody shh antibody SHH_HUMAN antibody SMMC I antibody SMMC1 antibody Sonic Hedgehog (Drosophila) homolog antibody sonic hedgehog homolog (Drosophila) antibody Sonic hedgehog homolog antibody Sonic hedgehog protein antibody Sonic hedgehog protein C-product antibody TPT antibody TPTPS antibody
Accession No.	Swiss-Prot#:Q15465
Uniprot	Q15465
GeneID	6469;
Calculated MW	50 kDa
Formulation	1*TBS (pH7.4), 1%BSA, 40%Glycerol. Preservative: 0.05% Sodium Azide.
Storage	Store at -20°C

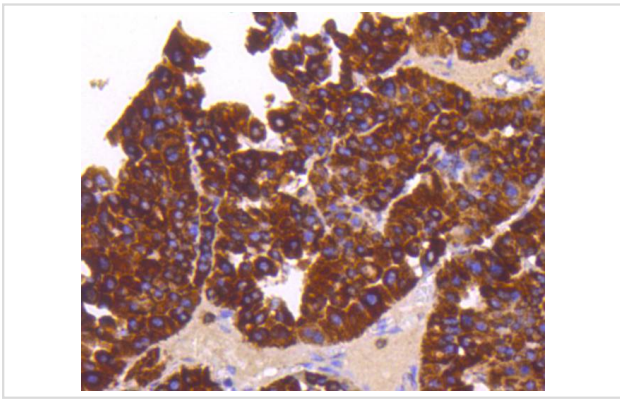
Application Details

WB: 1:1,000-1:2,000 IHC: 1:200-1:500 ICC: 1:50-1:200FC: 1:50-1:100

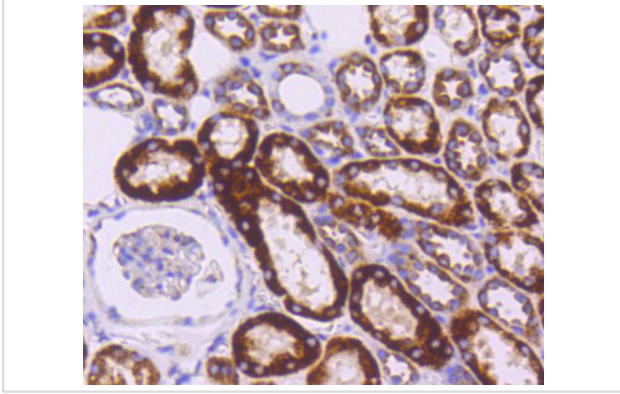
Images



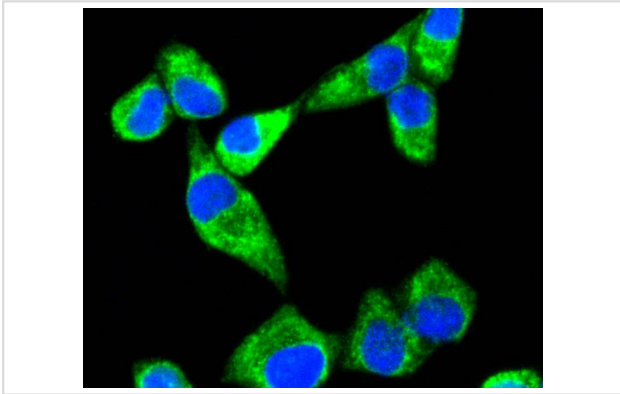
Western blot analysis of Sonic Hedgehog Protein on different lysates using anti-Sonic Hedgehog Protein antibody at 1/1,000 dilution. Positive control: Lane 1: Hela Lane 2: HepG2



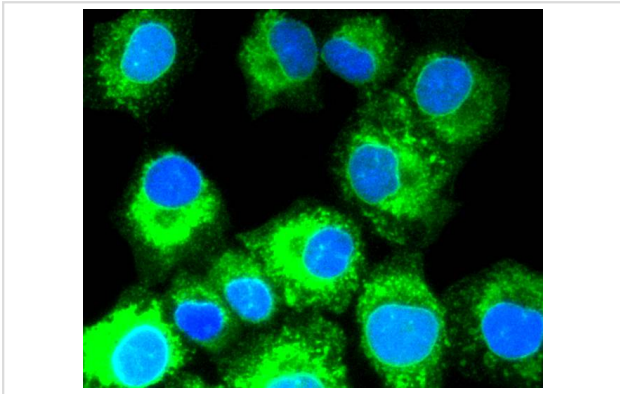
Immunohistochemical analysis of paraffin-embedded human liver cancer tissue using anti-Sonic Hedgehog Protein antibody. Counter stained with hematoxylin.



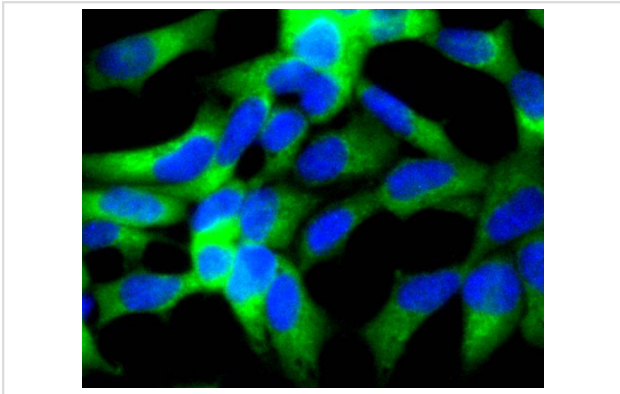
Immunohistochemical analysis of paraffin-embedded human kidney tissue using anti-Sonic Hedgehog Protein antibody. Counter stained with hematoxylin.



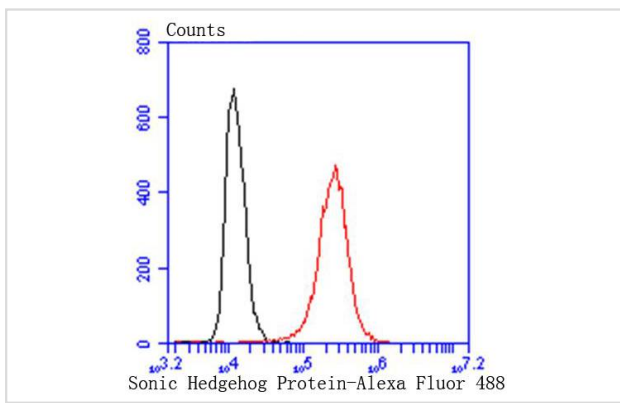
ICC staining Sonic Hedgehog Protein in HeLa cells (green). The nuclear counter stain is DAPI (blue). Cells were fixed in paraformaldehyde, permeabilised with 0.25% Triton X100/PBS.



ICC staining Sonic Hedgehog Protein in A549 cells (green). The nuclear counter stain is DAPI (blue). Cells were fixed in paraformaldehyde, permeabilised with 0.25% Triton X100/PBS.



ICC staining Sonic Hedgehog Protein in 293 cells (green). The nuclear counter stain is DAPI (blue). Cells were fixed in paraformaldehyde, permeabilised with 0.25% Triton X100/PBS.



Flow cytometric analysis of HeLa cells with Sonic Hedgehog Protein antibody at 1/50 dilution (red) compared with an unlabelled control (cells without incubation with primary antibody; black). Alexa Fluor 488-conjugated goat anti rabbit IgG was used as the secondary antibody.

Background

The *Drosophila* segment polarity gene hedgehog (*hh*) encodes a precursor protein which undergoes autocleavage to generate amino- and carboxy-terminal peptides. Both proteins are secreted and appear to function in embryonic and imaginal disc patterning. Several vertebrate homologs of *Drosophila* *hh* have been identified. These include Sonic hedgehog (*Shh*) (alternatively designated *Vhh-1*), Desert hedgehog (*Dhh*) and Indian hedgehog (*Ihh*). Each contain amino-terminal signal peptides and apparently function as secreted proteins involved in the mediation of various cell-cell interactions. *Shh* resembles *Drosophila* *hh* in that it is processed to generate an amino-terminal secreted peptide that is retained at or near the cell surface and a carboxy-terminal glycosylated more diffusible peptide.

References

Note: This product is for in vitro research use only