

SCF Rabbit mAb

Catalog No: #48994

Package Size: #48994-1 50ul #48994-2 100ul

Orders: order@signalwayantibody.com

Support: tech@signalwayantibody.com

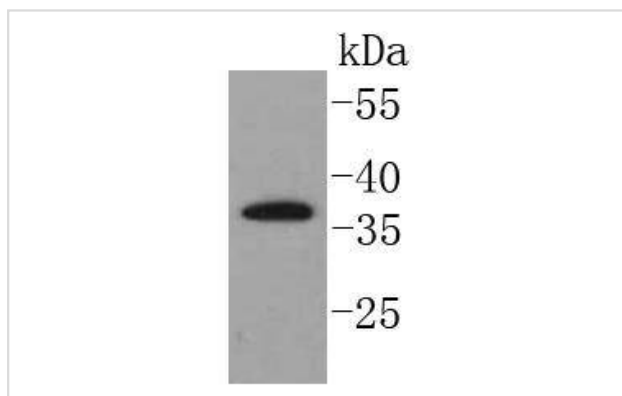
Description

Product Name	SCF Rabbit mAb
Host Species	Recombinant Rabbit
Clonality	Monoclonal antibody
Clone No.	SC61-06
Purification	ProA affinity purified
Applications	WB, ICC/IF, IHC, FC
Species Reactivity	Hu
Immunogen Description	recombinant protein
Other Names	C kit ligand antibody C-kit ligand antibody Ckit ligand antibody DCUA antibody DFNA69 antibody DKFZp686F2250 antibody familial progressive hyperpigmentation 2 antibody FPH2 antibody FPHH antibody KIT ligand antibody Kitl antibody KITLG antibody KL 1 antibody KL1 antibody Mast cell growth factor antibody MGF antibody MGF stem cell factor antibody SCF antibody SCF_HUMAN antibody SF antibody SHEP7 antibody sKITLG antibody Soluble KIT ligand antibody Steel factor antibody steel, mouse, homolog of antibody Stem cell factor antibody Stem cell factor precursor antibody
Accession No.	Swiss-Prot#:P21583
Uniprot	P21583
GeneID	4254;
Calculated MW	37 kDa
Formulation	1*TBS (pH7.4), 1%BSA, 40%Glycerol. Preservative: 0.05% Sodium Azide.
Storage	Store at -20°C

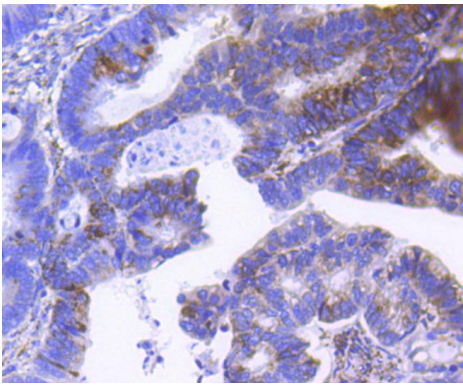
Application Details

WB: 1:1,000-1:2,000 IHC: 1:100-1:500 ICC: 1:50-1:200FC: 1:50-1:100

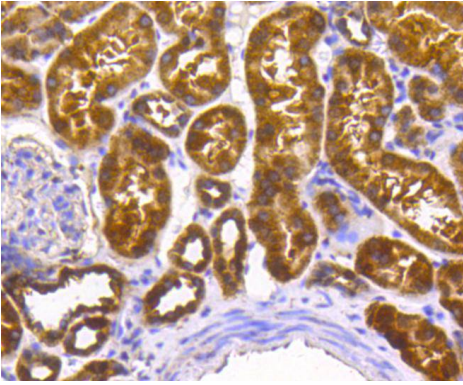
Images



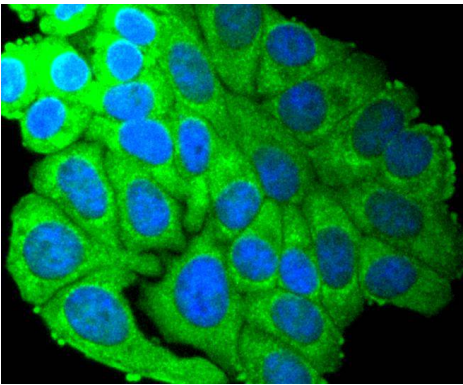
Western blot analysis of SCF on Raji cells lysates using anti-SCF antibody at 1/1,000 dilution.



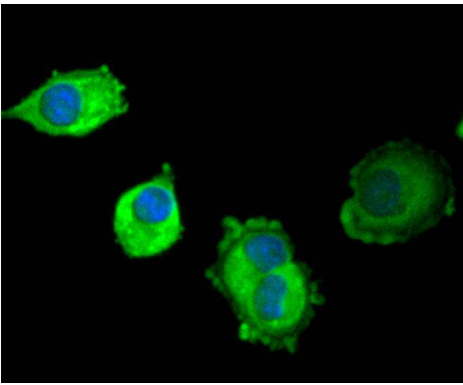
Immunohistochemical analysis of paraffin-embedded human colon cancer tissue using anti-SCF antibody. Counter stained with hematoxylin.



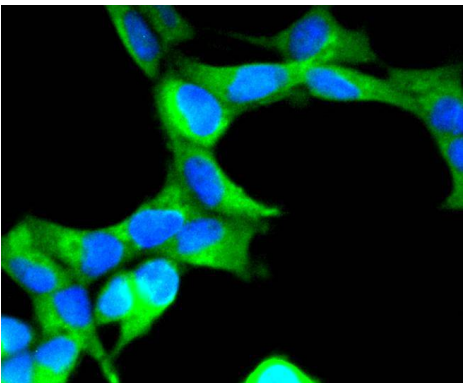
Immunohistochemical analysis of paraffin-embedded human kidney tissue using anti-SCF antibody. Counter stained with hematoxylin.



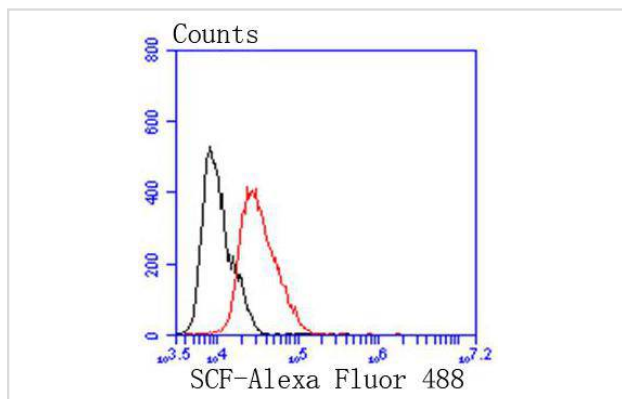
ICC staining SCF in HepG2 cells (green). The nuclear counter stain is DAPI (blue). Cells were fixed in paraformaldehyde, permeabilised with 0.25% Triton X100/PBS.



ICC staining SCF in PANC-1 cells (green). The nuclear counter stain is DAPI (blue). Cells were fixed in paraformaldehyde, permeabilised with 0.25% Triton X100/PBS.



ICC staining SCF in 293 cells (green). The nuclear counter stain is DAPI (blue). Cells were fixed in paraformaldehyde, permeabilised with 0.25% Triton X100/PBS.



Flow cytometric analysis of MCF-7 cells with SCF antibody at 1/50 dilution (red) compared with an unlabelled control (cells without incubation with primary antibody; black). Alexa Fluor 488-conjugated goat anti rabbit IgG was used as the secondary antibody.

Background

Stem cell factor (SCF) is the ligand for the transmembrane tyrosine kinase receptor proto-oncogene c-Kit. SCF, also designated KL, MGF and SLF, is a pleiotropic cytokine that has two alternatively spliced forms, 248 and 220 amino acids in length in human and mouse systems, respectively. Both the larger form and the smaller form are cleaved to produce soluble forms. The smaller splice variant lacks the proteolytic cleavage site, between amino acids 149 and 177 of the larger SCF form. The larger form of SCF is expressed in fibroblasts, brain and thymus, while the smaller form is found in spleen, testis, placenta and cerebellum. The SCF ligand is essential for the development of germ cells, hematopoietic progenitor cells and melanocyte precursors. SCF can stimulate the proliferation of mature mast cells as well as the maturation and proliferation of immature mast cells.

References

Note: This product is for in vitro research use only