

C/EBP Beta Rabbit mAb

Catalog No: #49008

Package Size: #49008-1 50ul #49008-2 100ul

Orders: order@signalwayantibody.com

Support: tech@signalwayantibody.com

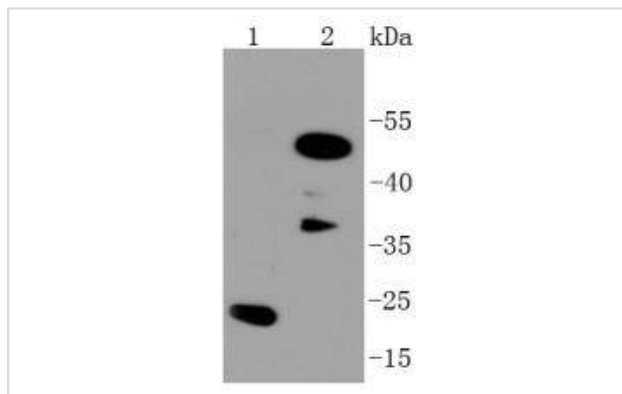
Description

Product Name	C/EBP Beta Rabbit mAb
Host Species	Recombinant Rabbit
Clonality	Monoclonal antibody
Clone No.	SC55-05
Purification	ProA affinity purified
Applications	WB, ICC/IF, IP, FC
Species Reactivity	Hu, Ms, Rt
Immunogen Description	recombinant protein
Other Names	AGP/EBP antibody C EBP beta antibody C/EBP beta antibody C/EBP related protein 2 antibody CCAAT Enhancer Binding Protein beta antibody CCAAT/enhancer-binding protein beta antibody CEBPB antibody CEBPB_HUMAN antibody CRP2 antibody IL 6DBP antibody IL6DBP antibody Interleukin 6 dependent binding protein antibody LAP antibody Liver activator protein antibody Liver enriched transcriptional activator antibody NF IL6 antibody NFIL6 antibody Nuclear factor NF IL6 antibody Nuclear factor NF-IL6 antibody SF B antibody SFB antibody Silencer factor B antibody TCF-5 antibody TCF5 antibody Transcription factor 5 antibody
Accession No.	Swiss-Prot#:P17676
Uniprot	P17676
GenelD	1051;
Calculated MW	36 kDa
Formulation	1*TBS (pH7.4), 1%BSA, 40%Glycerol. Preservative: 0.05% Sodium Azide.
Storage	Store at -20°C

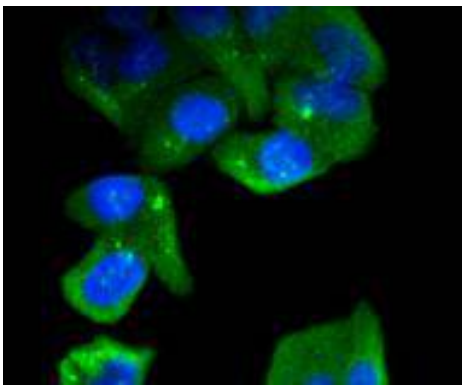
Application Details

WB: 1:1,000-1:2,000 ICC: 1:50-1:200 FC: 1:50-1:100

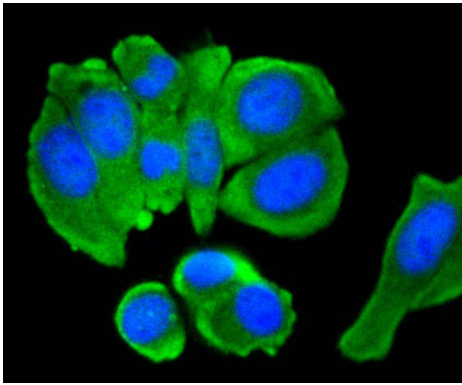
Images



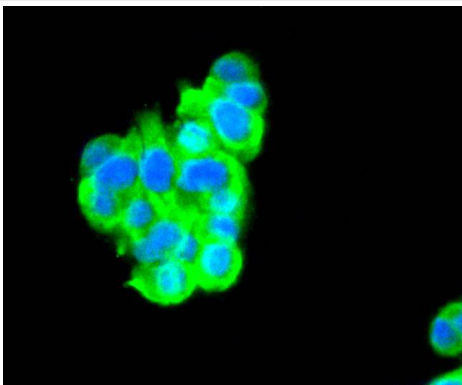
Western blot analysis of C/EBP Beta on different lysates using anti-C/EBP Beta antibody at 1/1,000 dilution. Positive control:
Lane 1: Hela Lane 2: PC-12



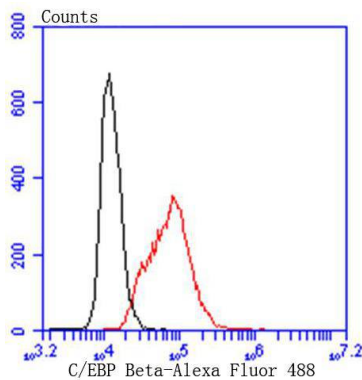
ICC staining C/EBP Beta in HeLa cells (green). The nuclear counter stain is DAPI (blue). Cells were fixed in paraformaldehyde, permeabilised with 0.25% Triton X100/PBS.



ICC staining C/EBP Beta in MCF-7 cells (green). The nuclear counter stain is DAPI (blue). Cells were fixed in paraformaldehyde, permeabilised with 0.25% Triton X100/PBS.



ICC staining C/EBP Beta in PC-12 cells (green). The nuclear counter stain is DAPI (blue). Cells were fixed in paraformaldehyde, permeabilised with 0.25% Triton X100/PBS.



Flow cytometric analysis of HeLa cells with C/EBP Beta antibody at 1/50 dilution (red) compared with an unlabelled control (cells without incubation with primary antibody; black). Alexa Fluor 488-conjugated goat anti rabbit IgG was used as the secondary antibody.

Background

CCAAT-enhancer binding proteins (C/EBP) are basic region/leucine zipper (bZIP) transcription factors selectively expressed during the differentiation of liver, adipose tissue, blood cells and the endocrine pancreas. C/EBP β is a member of the C/EBP transcription factor family. The C/EBP β gene encodes several isoforms containing truncated transcription activation domains due to the alternative translational initiation at multiple AUG start sites. C/EBP β is also known as interleukin 6-dependent DNA-binding protein (IL6DBP), liver activator protein (LAP) or liver-enriched transcriptional activator protein transcription factor 5 (TCF5). C/EBP β contributes to the regulation of the acute phase response in hepatocytes. Stat3 has an important function in IL-6-mediated transcription of the C/EBP β gene that has direct implication for acute phase response in liver cells. The C/EBP β form requires phosphorylation for its DNA binding ability, and increase binding of C/EBP β isoforms during acute-phase reaction occurs through its

upregulation and structural modification.

References

Note: This product is for in vitro research use only