

NLRP3 Rabbit mAb

Catalog No: #49012



Package Size: #49012-1 50ul #49012-2 100ul

Orders: order@signalwayantibody.comSupport: tech@signalwayantibody.com

Description

Product Name	NLRP3 Rabbit mAb
Host Species	Recombinant Rabbit
Clonality	Monoclonal antibody
Clone No.	SC06-23
Purification	ProA affinity purified
Applications	WB, ICC/IF, IHC, IP, FC
Species Reactivity	Hu, Ms, Rt
Immunogen Description	recombinant protein
Other Names	AGTAVPRL antibody AII/AVP antibody Angiotensin/vasopressin receptor AII/AVP like antibody Angiotensin/vasopressin receptor AII/AVP-like antibody C1orf7 antibody Caterpillar protein 1.1 antibody CIAS 1 antibody CIAS1 antibody CLR1.1 antibody Cold autoinflammatory syndrome 1 antibody Cold autoinflammatory syndrome 1 protein antibody Cryopyrin antibody Familial cold autoinflammatory syndrome antibody FCAS antibody FCU antibody LRR and PYD domains-containing protein 3 antibody Muckle-Wells syndrome antibody MWS antibody NACHT antibody NACHT LRR and PYD containing protein 3 antibody NALP 3 antibody NALP3 antibody NALP3_HUMAN antibody NLRP3 antibody PYPAF 1 antibody PYPAF1 antibody PYRIN containing APAF1 like protein 1 antibody PYRIN-containing APAF1-like protein 1 antibody
Accession No.	Swiss-Prot#:Q96P20
Uniprot	Q96P20
GeneID	114548;
Calculated MW	118/85 kDa
Formulation	1*TBS (pH7.4), 1%BSA, 40%Glycerol. Preservative: 0.05% Sodium Azide.
Storage	Store at -20°C

Application Details

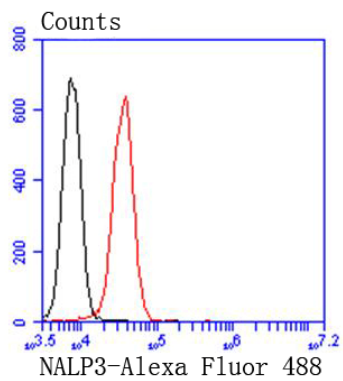
WB: 1:1,000

IHC: 1:50-1:200

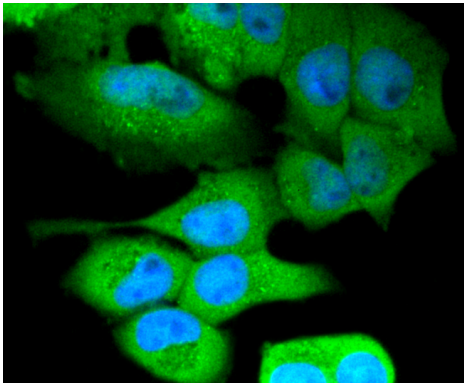
ICC: 1:100-1:500

FC: 1:50-1:100

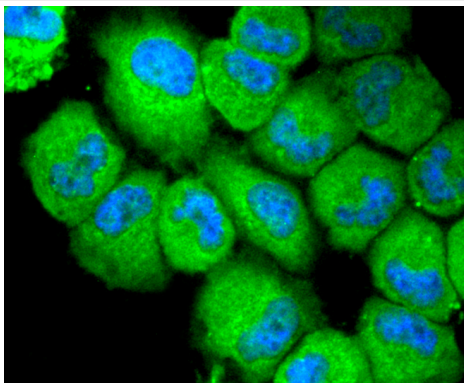
Images



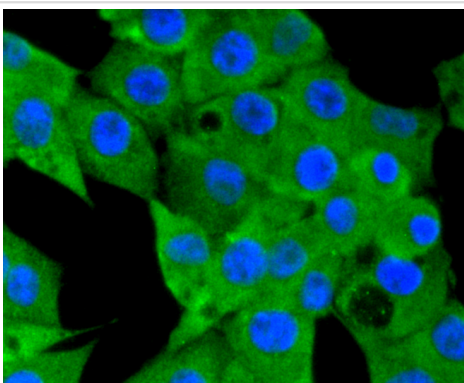
Flow cytometric analysis of Jurkat cells with NLRP3 antibody at 1/50 dilution (red) compared with an unlabelled control (cells without incubation with primary antibody; black). Alexa Fluor 488-conjugated goat anti rabbit IgG was used as the secondary antibody.



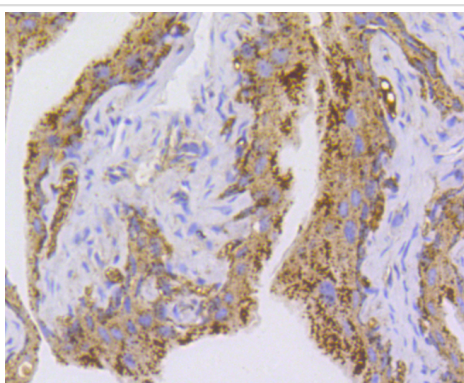
ICC staining NLRP3 in HeLa cells (green). The nuclear counter stain is DAPI (blue). Cells were fixed in paraformaldehyde, permeabilised with 0.25% Triton X100/PBS.



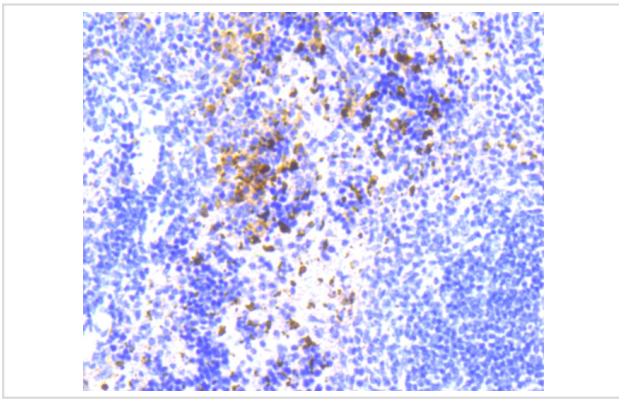
ICC staining NLRP3 in HUVEC cells (green). The nuclear counter stain is DAPI (blue). Cells were fixed in paraformaldehyde, permeabilised with 0.25% Triton X100/PBS.



ICC staining NLRP3 in PMVEC cells (green). The nuclear counter stain is DAPI (blue). Cells were fixed in paraformaldehyde, permeabilised with 0.25% Triton X100/PBS.



Immunohistochemical analysis of paraffin-embedded mouse bladder tissue using anti- NLRP3 antibody. Counter stained with hematoxylin.



Immunohistochemical analysis of paraffin-embedded mouse spleen tissue using anti- NLRP3 antibody. Counter stained with hematoxylin.

Background

Cryopyrin interacts selectively with apoptosis-associated specklike protein containing a CARD domain (ASC). This complex may function as an upstream activator of NF κ B signaling and caspase-1 activation. The complex also inhibits TNF α induced activation and nuclear translocation of RelA/NF κ B p65. Mutations in Cryopyrin and Pypin proteins are responsible for several autoinflammatory disorders in humans, including familial cold autoinflammatory syndrome (FCAS), Muckle-Wells syndrome (MWS) and chronic infantile neurologic cutaneous and articular syndrome (CINCA).

References

Note: This product is for in vitro research use only