

## RhoA Rabbit mAb

Catalog No: #49020

Package Size: #49020-1 50ul #49020-2 100ul

Orders: order@signalwayantibody.com

Support: tech@signalwayantibody.com

## Description

Product Name	RhoA Rabbit mAb
Host Species	Recombinant Rabbit
Clonality	Monoclonal antibody
Clone No.	SN0612
Purification	ProA affinity purified
Applications	WB, ICC/IF, FC
Species Reactivity	Hu, Ms, Rt
Immunogen Description	recombinant protein
Other Names	Aplysia ras related homolog 12 antibody ARH12 antibody ARHA antibody H 12 antibody H12 antibody Oncogene RHO H12 antibody Ras homolog family member A antibody Ras homolog gene family member A antibody Rho A antibody Rho cDNA clone 12 antibody RHO H12 antibody RHO12 antibody RHOA antibody RHOA_HUMAN antibody RHOH12 antibody Small GTP binding protein Rho A antibody Transforming protein Rho A antibody Transforming protein RhoA antibody
Accession No.	Swiss-Prot#:P61586
Uniprot	P61586
GeneID	387;
Calculated MW	22 kDa
Formulation	1*TBS (pH7.4), 1%BSA, 40%Glycerol. Preservative: 0.05% Sodium Azide.
Storage	Store at -20°C

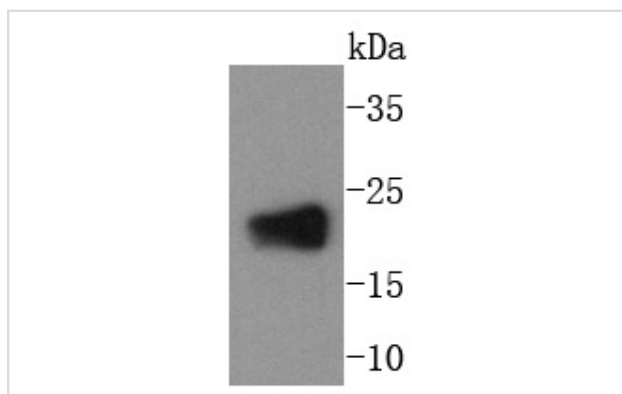
## Application Details

WB: 1:1,000-1:2,000

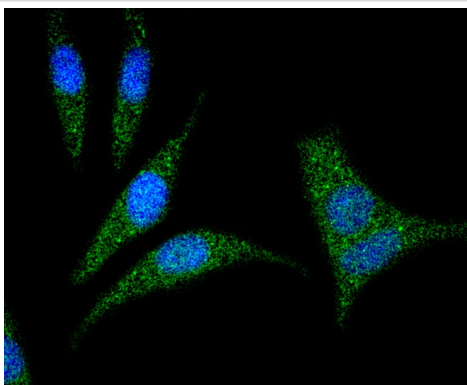
ICC: 1:50-1:200

FC: 1:50-1:100

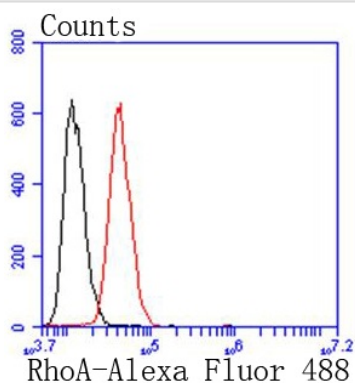
## Images



Western blot analysis of RhoA on rat brain lysates using anti-RhoA antibody at 1/1,000 dilution.



ICC staining RhoA in SH-SY-5Y cells (green). The nuclear counter stain is DAPI (blue). Cells were fixed in paraformaldehyde, permeabilised with 0.25% Triton X100/PBS.



Flow cytometric analysis of Hela cells with RhoA antibody at 1/50 dilution (red) compared with an unlabelled control (cells without incubation with primary antibody; black). Alexa Fluor 488-conjugated goat anti rabbit IgG was used as the secondary antibody.

## Background

The Ras p21 family of guanine nucleotide proteins has been widely studied in view of its apparent role in signal transduction pathways and high frequency of mutations in human malignancies. It is now clear, however, that the Ras proteins (H-, K- and N-Ras p21) are members of a much larger superfamily of related proteins. Six members of this family, Rap 1A, Rap 1B, Rap 2, R-Ras, Ral A and Ral B, exhibit approximately 50% amino acid homology to Ras. The six mammalian Rho proteins (Rho A, B, C, G, 7 and 8) are approximately 30% homologous to Ras and are expressed in a wide range of cell types. Both Ras p21 and Rho p21, as well as other members of the Ras superfamily, contain a carboxy-terminal CAAX sequence (C, cysteine; A, aliphatic amino acid; X, any amino acid) which in the case of Ras has been shown to be essential for correct localization and function.

Note: This product is for in vitro research use only