

MUC1 Rabbit mAb

Catalog No: #49024



Package Size: #49024-1 50ul #49024-2 100ul

Orders: order@signalwayantibody.com

Support: tech@signalwayantibody.com

Description

Product Name	MUC1 Rabbit mAb
Host Species	Recombinant Rabbit
Clonality	Monoclonal antibody
Clone No.	SN06-80
Purification	ProA affinity purified
Applications	WB, ICC/IF, IHC, IP, FC
Species Reactivity	Hu
Immunogen Description	recombinant protein
Other Names	ADMCKD antibody ADMCKD1 antibody Breast carcinoma associated antigen DF3 antibody Breast carcinoma-associated antigen DF3 antibody CA 15-3 antibody CA15 3 antibody CA15 3 antigen antibody CA15.3 antibody Cancer antigen 15-3 antibody Carcinoma associated mucin antibody Carcinoma-associated mucin antibody CD 227 antibody CD227 antibody DF3 antigen antibody EMA antibody Episialin antibody H23 antigen antibody H23AG antibody KL 6 antibody KL-6 antibody KL6 antibody Krebs von den Lungen-6 antibody MAM 6 antibody MAM6 antibody MCD antibody MCKD antibody MCKD1 antibody Medullary cystic kidney disease 1 (autosomal dominant) antibody Medullary cystic kidney disease, autosomal dominant antibody MUC 1 antibody MUC-1 antibody MUC-1/SEC antibody MUC-1/X antibody MUC1 antibody MUC1-alpha antibody MUC1-beta antibody MUC1-CT antibody MUC1-NT antibody MUC1/ZD antibody MUC1_HUMAN antibody Mucin 1 antibody Mucin 1 transmembrane antibody Mucin 1, cell surface associated antibody Mucin-1 subunit beta antibody Peanut reactive urinary mucin antibody Peanut-reactive urinary mucin antibody PEM antibody PEMT antibody Polymorphic epithelial mucin antibody PUM antibody Tumor associated epithelial membrane antigen antibody Tumor associated epithelial mucin antibody Tumor associated mucin antibody Tumor-associated epithelial membrane antigen antibody Tumor-associated mucin antibody
Accession No.	Swiss-Prot#:P15941
Uniprot	P15941
GeneID	4582;
Calculated MW	23 kDa
Formulation	1*TBS (pH7.4), 1%BSA, 40%Glycerol. Preservative: 0.05% Sodium Azide.
Storage	Store at -20°C

Application Details

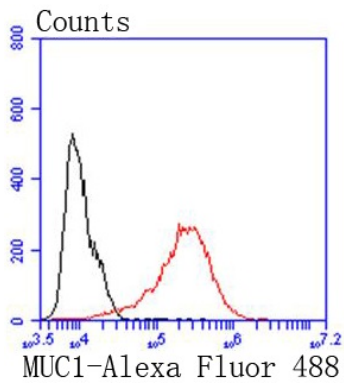
WB: 1:1,000-1:2,000

IHC: 1:50-1:200

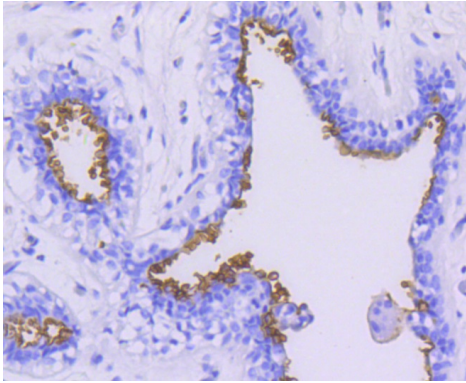
ICC: 1:50-1:200

FC: 1:50-1:100

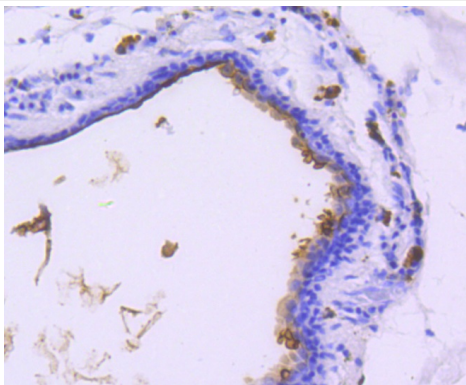
Images



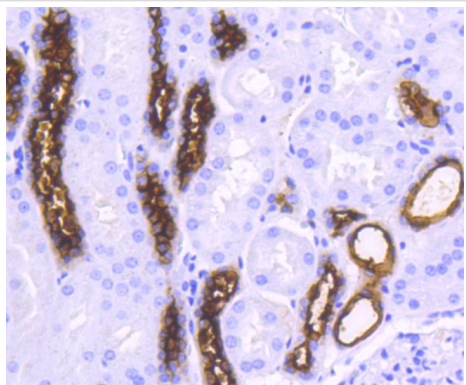
Western blot analysis of MUC1 on Hela cells lysates using anti-MUC1 antibody at 1/1,000 dilution.



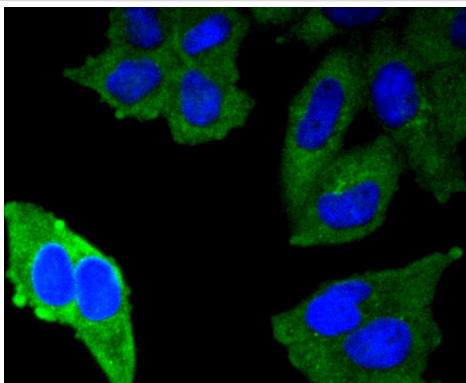
Immunohistochemical analysis of paraffin-embedded human breast tissue using anti-MUC1 antibody. Counter stained with hematoxylin.



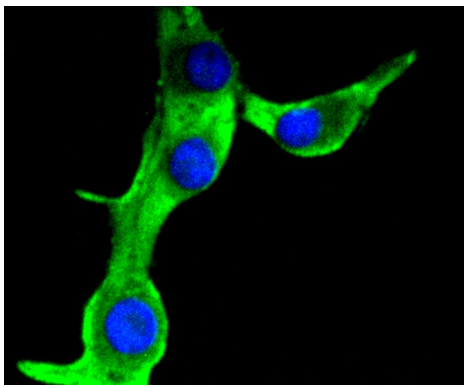
Immunohistochemical analysis of paraffin-embedded human breast carcinoma tissue using anti-MUC1 antibody. Counter stained with hematoxylin.



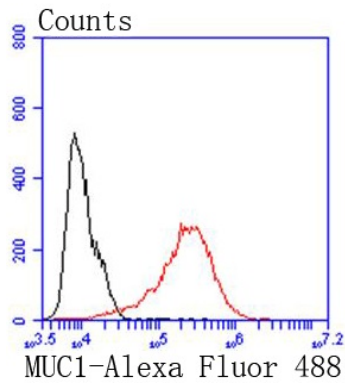
Immunohistochemical analysis of paraffin-embedded human kidney tissue using anti-MUC1 antibody. Counter stained with hematoxylin.



ICC staining MUC1 in Hela cells (green). The nuclear counter stain is DAPI (blue). Cells were fixed in paraformaldehyde, permeabilised with 0.25% Triton X100/PBS.



ICC staining MUC1 in B16-F1 cells (green). The nuclear counter stain is DAPI (blue). Cells were fixed in paraformaldehyde, permeabilised with 0.25% Triton X100/PBS.



Flow cytometric analysis of MCF-7 cells with MUC1 antibody at 1/50 dilution (red) compared with an unlabelled control (cells without incubation with primary antibody; black). Alexa Fluor 488-conjugated goat anti rabbit IgG was used as the secondary antibody.

Background

The mucins are a family of highly glycosylated, secreted proteins with a basic structure consisting of a variable number of tandem repeats (VNTRs) encoded by 60 base pairs (Mucin 1), 69 base pairs (Mucin 2) and 51 base pairs (Mucin 3). The number of repeats is highly polymorphic and varies among different alleles. Mucin 1 proteins are expressed as type I membrane proteins in addition to secreted forms. Mucin 1 is aberrantly expressed in epithelial tumors including breast carcinomas. Mucin 2 coats the epithelia of the intestines and airways and is associated with colonic tumors. Mucin 3 is a major component of various mucus gels and is broadly expressed in normal and tumor cells.

Note: This product is for in vitro research use only