

## SOX9 Rabbit mAb

Catalog No: #49070

Package Size: #49070-1 50ul #49070-2 100ul

Orders: [order@signalwayantibody.com](mailto:order@signalwayantibody.com)Support: [tech@signalwayantibody.com](mailto:tech@signalwayantibody.com)

## Description

Product Name	SOX9 Rabbit mAb
Host Species	Recombinant Rabbit
Clonality	Monoclonal antibody
Clone No.	SN74-09
Purification	ProA affinity purified
Applications	WB, ICC/IF, IHC, IP, FC
Species Reactivity	Hu, Ms, Rt
Immunogen Description	recombinant protein
Other Names	campomelic dysplasia autosomal sex reversal antibody CMD 1 antibody CMD1 antibody CMPD 1 antibody CMPD1 antibody SOX 9 antibody Sox9 antibody SOX9_HUMAN antibody SRA 1 antibody SRA1 antibody SRXX2 antibody SRXY10 antibody SRY (sex determining region Y) box 9 (campomelic dysplasia autosomal antibody SRY (sex determining region Y) box 9 antibody SRY (sex determining region Y)-box 9 antibody SRY (sex-determining region Y)-box 9 protein antibody SRY related HMG box gene 9 antibody Transcription factor SOX 9 antibody Transcription factor SOX-9 antibody transcription factor SOX9 antibody
Accession No.	Swiss-Prot#:P48436
Uniprot	P48436
GeneID	6662;
Calculated MW	56 kDa
Formulation	1*TBS (pH7.4), 1%BSA, 40%Glycerol. Preservative: 0.05% Sodium Azide.
Storage	Store at -20°C

## Application Details

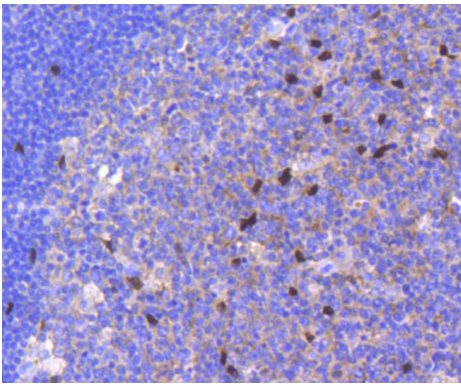
WB: 1:1,000

IHC: 1:50-1:200

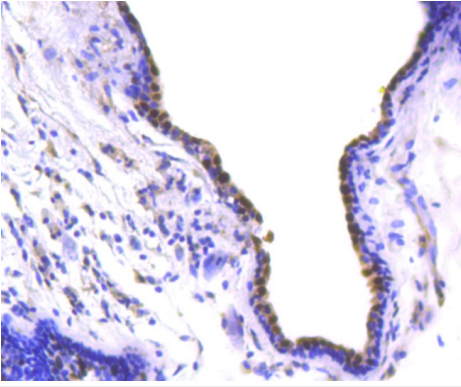
ICC: 1:50-1:200

FC: 1:50-1:100

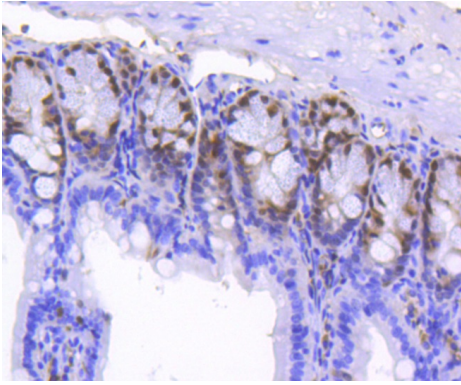
## Images



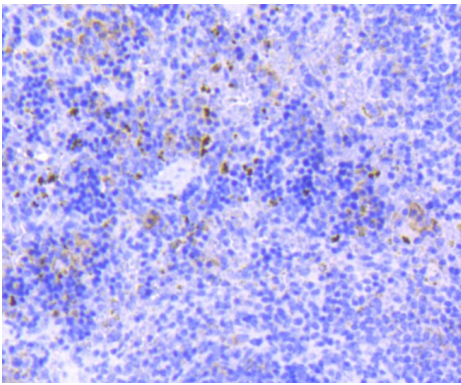
Immunohistochemical analysis of paraffin-embedded human tonsil tissue using anti-SOX9 antibody. Counter stained with hematoxylin.



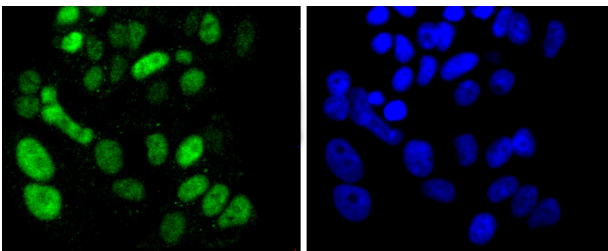
Immunohistochemical analysis of paraffin-embedded human breast carcinoma tissue using anti-SOX9 antibody. Counter stained with hematoxylin.



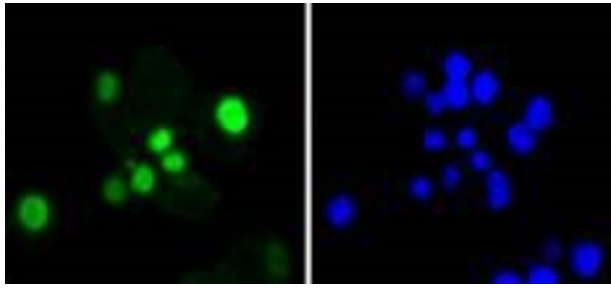
Immunohistochemical analysis of paraffin-embedded mouse colon tissue using anti-SOX9 antibody. Counter stained with hematoxylin.



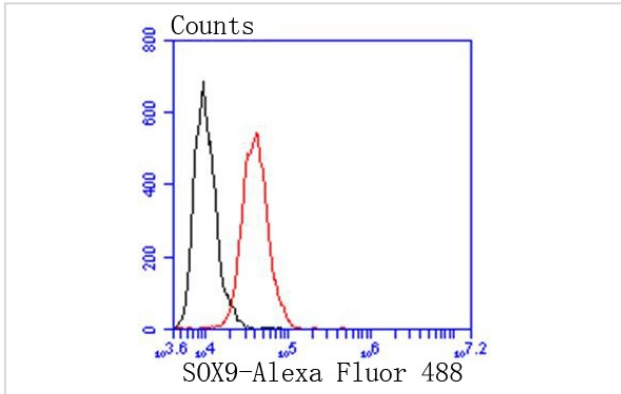
Immunohistochemical analysis of paraffin-embedded mouse spleen tissue using anti-SOX9 antibody. Counter stained with hematoxylin.



ICC staining SOX9 in MCF-7 cells (green). The nuclear counter stain is DAPI (blue). Cells were fixed in paraformaldehyde, permeabilised with 0.25% Triton X100/PBS.



ICC staining SOX9 in SW480 cells (green). The nuclear counter stain is DAPI (blue). Cells were fixed in paraformaldehyde, permeabilised with 0.25% Triton X100/PBS.



Flow cytometric analysis of Hela cells with SOX9 antibody at 1/50 dilution (red) compared with an unlabelled control (cells without incubation with primary antibody; black). Alexa Fluor 488-conjugated goat anti rabbit IgG was used as the secondary antibody.

## Background

Sox genes comprise a family of genes that are related to the mammalian sex determining gene SRY. These genes similarly contain sequences that encode for the HMG-box domain, which is responsible for the sequence-specific DNA-binding activity. Sox genes encode putative transcriptional regulators implicated in the decision of cell fates during development and the control of diverse developmental processes. The highly complex group of Sox genes cluster at least 40 different loci that rapidly diverged in various animal lineages. At present, 30 Sox genes have been identified. Members of this family have been shown to be conserved during evolution and to play key roles during animal development. Some are involved in human diseases, including sex reversal.

## References

Note: This product is for in vitro research use only