

CCR2 Rabbit mAb

Catalog No: #49080

Package Size: #49080-1 50ul #49080-2 100ul

Orders: order@signalwayantibody.com

Support: tech@signalwayantibody.com

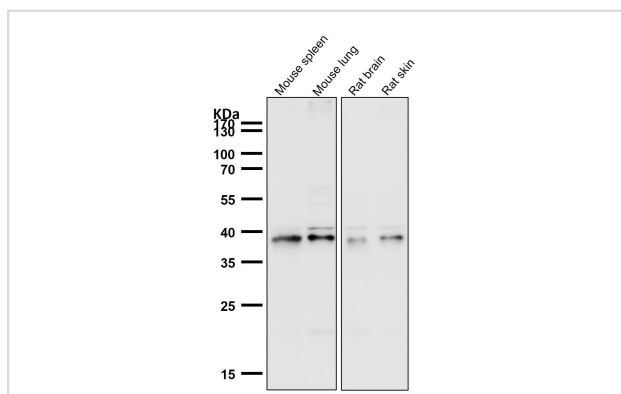
Description

Product Name	CCR2 Rabbit mAb
Clone No.	SN707
Purification	Affinity-chromatography
Applications	WB, IHC, IP, FC
Species Reactivity	Hu, Ms
Immunogen Description	A synthesized peptide derived from human CCR2/CKR2
Other Names	C C chemokine receptor type 2 antibody C C CKR 2 antibody C-C chemokine receptor type 2 antibody C-C CKR-2 antibody CC chemokine receptor type 2 antibody CC CKR 2 antibody CC-CKR-2 antibody CCCKR2 antibody CCR 2 antibody CCR-2 antibody CCR1L antibody CCR2 antibody CCR2_HUMAN antibody CCR2A antibody CCR2B antibody CCR5L antibody CD192 antibody CD192 antigen antibody Chemokine C C motif receptor 2 antibody Chemokine CC Motif Receptor 2 antibody CKR 2 antibody CKR2 antibody CKR2A antibody CKR2B antibody CMKBR2 antibody MCP 1 R antibody MCP-1-R antibody MCP1 RECEPTOR antibody MCP1R antibody Monocyte chemoattractant protein 1 receptor antibody Monocyte Chemotactic Protein 1 Receptor antibody Monocyte Chemotactic Protein 1 Receptor antibody
Accession No.	Swiss-Prot#:P41597
Uniprot	P41597
GeneID	729230;
Calculated MW	42 kDa
Concentration	1.15mg/ml
Formulation	Rabbit IgG in phosphate buffered saline , pH 7.4, 150mM NaCl, 0.02% sodium azide and 50% glycerol.
Storage	Store at +4°C short term. Store at -20°C long term. Avoid freeze / thaw cycle.

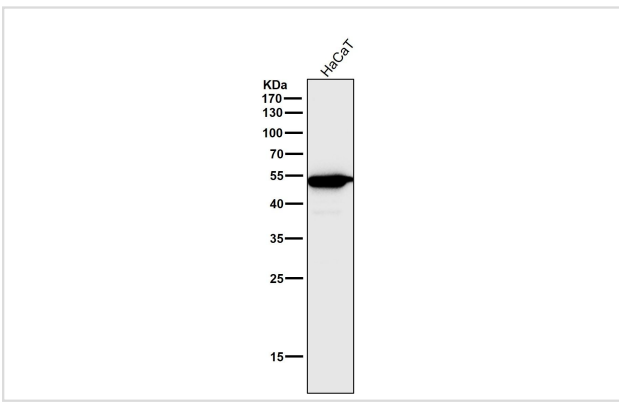
Application Details

WB 1:1000~1:5000 IHC 1:50~1:200 IP 1:50 FC 1:100

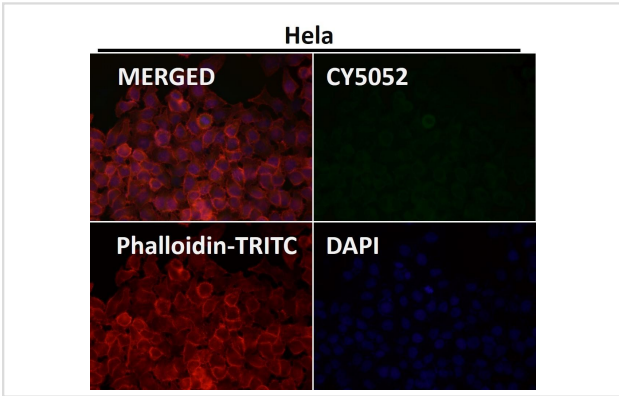
Images



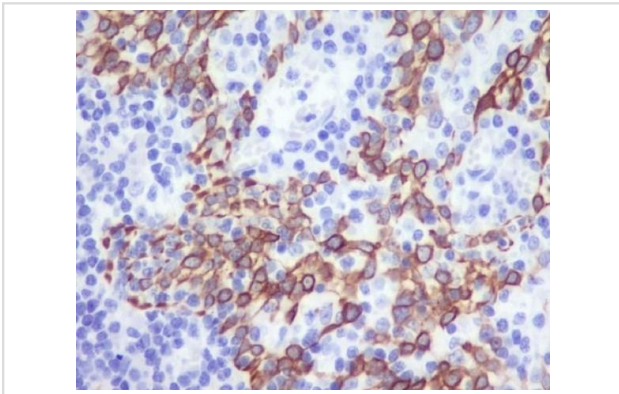
All lanes use the Antibody at 1:500 dilution for 1 hour at room temperature.



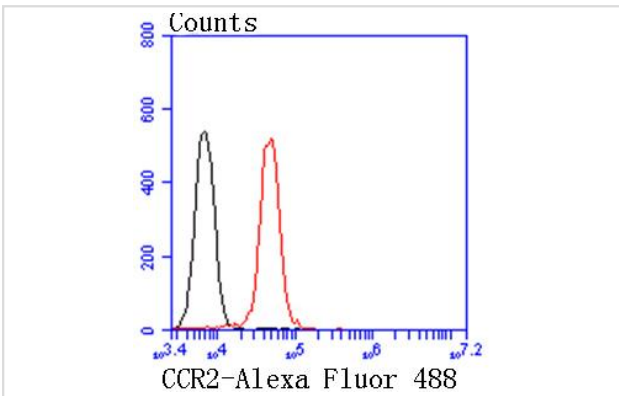
All lanes use the Antibody at 1:1K dilution for 1 hour at room temperature.



Immunofluorescent analysis using the Antibody at 1:50 dilution.



Immunohistochemical analysis of paraffin-embedded human tonsil.



Flow cytometric analysis of K562 cells with CCR2 antibody at 1/50 dilution (red) compared with an unlabelled control (cells without incubation with primary antibody; black). Alexa Fluor 488-conjugated goat anti rabbit IgG was used as the secondary antibody

Background

Receptor for the MCP-1, MCP-3 and MCP-4 chemokines. Transduces a signal by increasing the intracellular calcium ions level. Alternative coreceptor with CD4 for HIV-1 infection.

Note: This product is for in vitro research use only