

Tubulin  $\alpha$  Polyclonal Antibody

Catalog No: #41517

Package Size: #41517-1 50ul #41517-2 100ul

Orders: [order@signalwayantibody.com](mailto:order@signalwayantibody.com)Support: [tech@signalwayantibody.com](mailto:tech@signalwayantibody.com)

## Description

Product Name	Tubulin $\alpha$ Polyclonal Antibody
Host Species	Rabbit
Clonality	Polyclonal
Purification	The antibody was affinity-purified from rabbit antiserum by affinity-chromatography using epitope-specific immunogen.
Applications	WB IHC IF ELISA
Species Reactivity	Hu Ms Rt
Specificity	Tubulin $\alpha$ Polyclonal Antibody detects endogenous levels of Tubulin $\alpha$ protein.
Immunogen Type	peptide
Immunogen Description	Synthesized peptide derived from the C-terminal region of human Tubulin $\alpha$ .
Target Name	Tubulin $\alpha$
Other Names	TUBA1A; TUBA3; Tubulin alpha-1A chain; Alpha-tubulin 3; Tubulin B-alpha-1; Tubulin alpha-3 chain; TUBA1B; Tubulin alpha-1B chain; Alpha-tubulin ubiquitous; Tubulin K-alpha-1; Tubulin alpha-ubiquitous chain
Accession No.	Swiss-Prot: Q71U36/P68363NCBI Gene ID: 7846/10376
Uniprot	Q71U36
GeneID	7846;
SDS-PAGE MW	50kd
Concentration	1mg/ml
Formulation	Liquid in PBS containing 50% glycerol, 0.5% BSA and 0.02% sodium azide.
Storage	Store at -20°C/1 year

## Application Details

Western Blot: 1/500 - 1/2000.

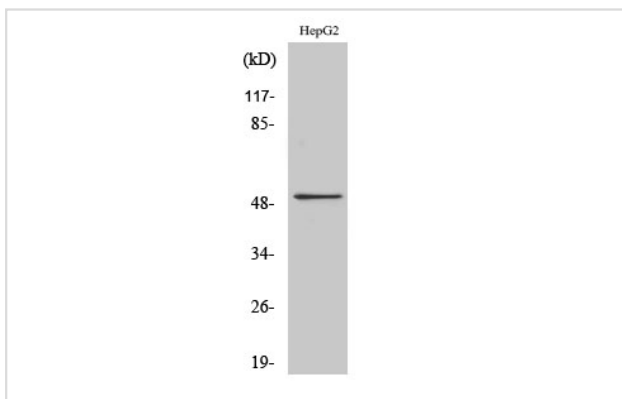
Immunohistochemistry: 1/100 - 1/300.

Immunofluorescence: 1/200 - 1/1000.

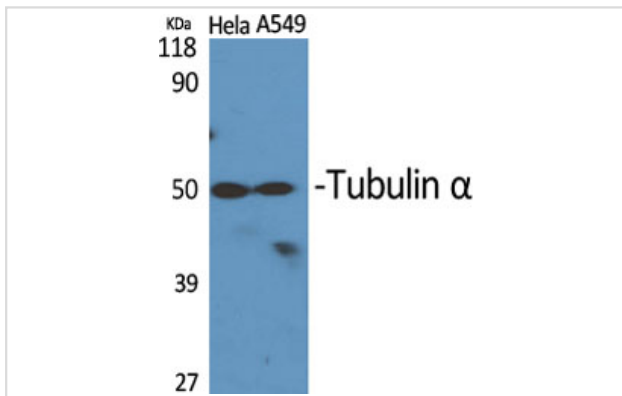
ELISA: 1/5000.

Not yet tested in other applications.

## Images



Western Blot analysis of MCF7 cells using Tubulin  $\alpha$  Polyclonal Antibody



Western Blot analysis of HeLa A549 cells using Tubulin  $\alpha$  Polyclonal Antibody

---

Note: This product is for in vitro research use only