

## S100A4 Rabbit mAb

Catalog No: #49121

Package Size: #49121-1 50ul #49121-2 100ul

Orders: [order@signalwayantibody.com](mailto:order@signalwayantibody.com)Support: [tech@signalwayantibody.com](mailto:tech@signalwayantibody.com)

## Description

Product Name	S100A4 Rabbit mAb
Clone No.	SD200-08
Purification	Affinity-chromatography
Applications	WB, ICC/IF, IHC, IP, FC
Species Reactivity	Hu, Ms, Rt
Immunogen Description	A synthesized peptide derived from human S100A4
Other Names	18A2 antibody 42A antibody calcium Placental protein antibody Calvasculin antibody CAPL antibody Fibroblast specific protein 1 (FSP1) antibody Fibroblast specific protein 1 antibody Fibroblast specific protein antibody FSP1 antibody Leukemia multidrug resistance associated protein antibody Malignant transformation suppression 1 (MTS1) antibody Malignant transformation suppression 1 antibody Metastasin antibody MTS1 antibody OTTHUMP00000015467 antibody OTTHUMP00000015468 antibody P9KA antibody PEL98 antibody Placental calcium-binding protein antibody Protein Mts1 antibody Protein S100 A4 antibody Protein S100-A4 antibody S100 calcium binding protein A4 (calcium protein, calvasculin, metastasin, murine placental homolog) antibody S100 calcium binding protein A4 antibody S100 calcium-binding protein A4 antibody S100a4 antibody S10A4_HUMAN antibody
Accession No.	Swiss-Prot#:P26447
Uniprot	P26447
GeneID	6275;
Calculated MW	12 kDa
Formulation	Rabbit IgG in 10mM phosphate buffered saline , pH 7.4, 150mM sodium chloride, 0.05% BSA, 0.02% sodium azide and 50% glycerol.
Storage	Store at +4°C for short term. Store at -20°C for long term. Avoid freeze/thaw cycle.

## Application Details

WB 1:1000-1:2000

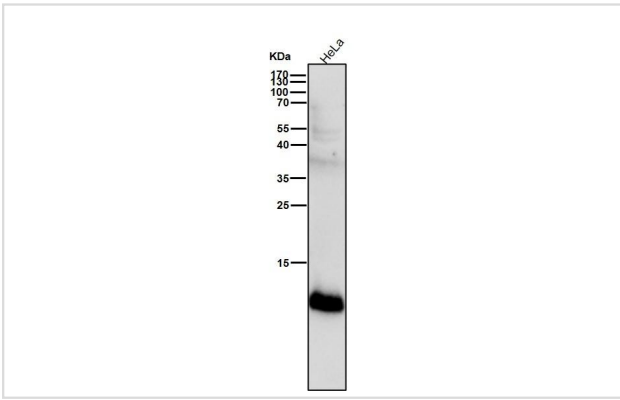
IHC 1:100-1:200

ICC/IF 1:50-1:200

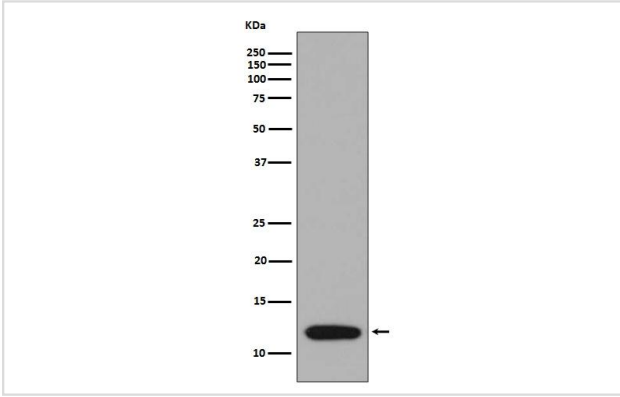
IP 1:20-1:50

FC 1:20-1:100

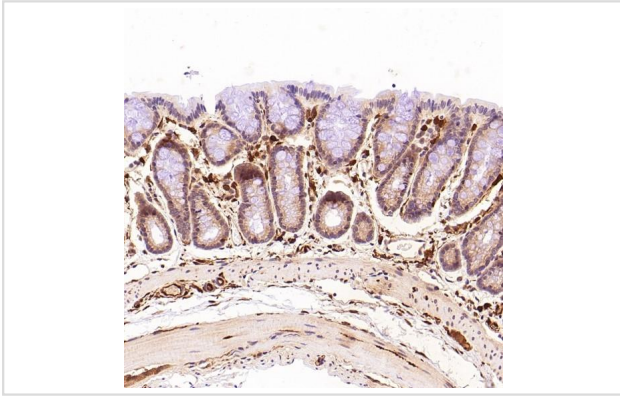
## Images



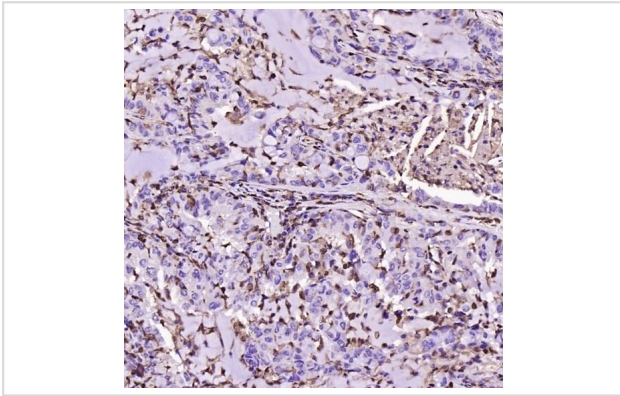
All lanes use the Antibody at 1:2K dilution for 1 hour at room temperature.



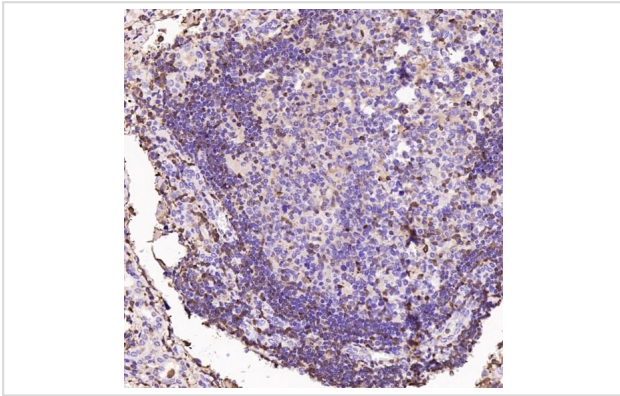
Western blot analysis of S100A4 expression in A375 cell lysate.



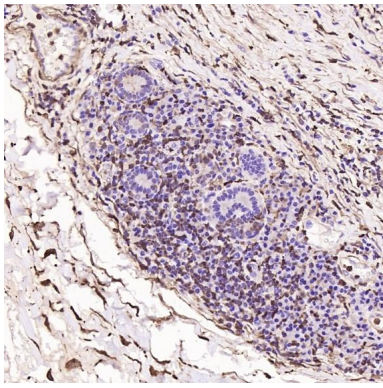
Immunohistochemical analysis of paraffin-embedded Rat stomach, using the Antibody at 1:200 dilution.



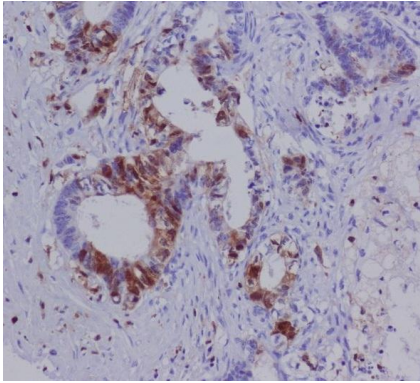
Immunohistochemical analysis of paraffin-embedded Human lung adenocarcinoma, using the Antibody at 1:200 dilution.



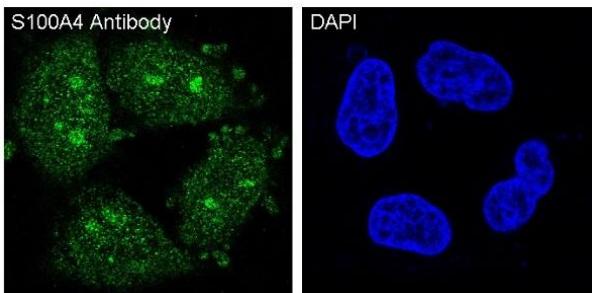
Immunohistochemical analysis of paraffin-embedded Human thyroid cancer, using the Antibody at 1:200 dilution.



Immunohistochemical analysis of paraffin-embedded Human esophageal carcinoma, using the Antibody at 500 dilution.



Immunohistochemical analysis of paraffin-embedded human colon carcinoma, using S100A4 Antibody.



Immunofluorescent analysis of HeLa cells, using S100A4 Antibody.

## Background

Calcium-binding protein that plays a role in various cellular processes including motility, angiogenesis, cell differentiation, apoptosis, and autophagy.

Note: This product is for in vitro research use only