

## Cyclin E2 Rabbit mAb

Catalog No: #49125

Package Size: #49125-1 50ul #49125-2 100ul

Orders: order@signalwayantibody.com

Support: tech@signalwayantibody.com

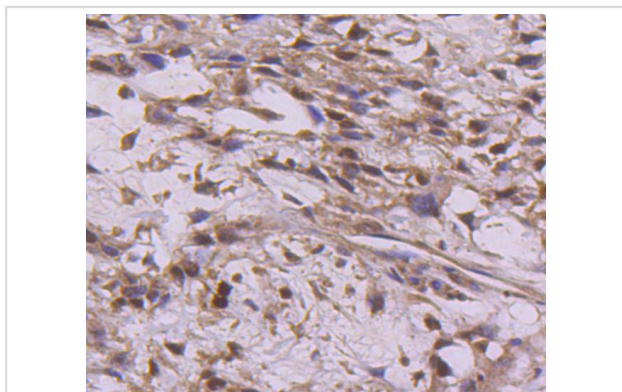
## Description

Product Name	Cyclin E2 Rabbit mAb
Host Species	Recombinant Rabbit
Clonality	Monoclonal antibody
Clone No.	SD2035
Purification	ProA affinity purified
Applications	WB, ICC/IF, IHC, FC
Species Reactivity	Hu, Ms
Immunogen Description	recombinant protein
Other Names	CCN E2 antibody CCNE 2 antibody CCNE2 antibody CCNE2 protein antibody CYC E2 antibody CYCE 2 antibody CYCE2 antibody CyclinE2 antibody G1/S specific cyclin E2 antibody
Accession No.	Swiss-Prot#:O96020
Uniprot	O96020
GeneID	9134;
Calculated MW	47 kDa
Formulation	1*TBS (pH7.4), 1%BSA, 40%Glycerol. Preservative: 0.05% Sodium Azide.
Storage	Store at -20°C

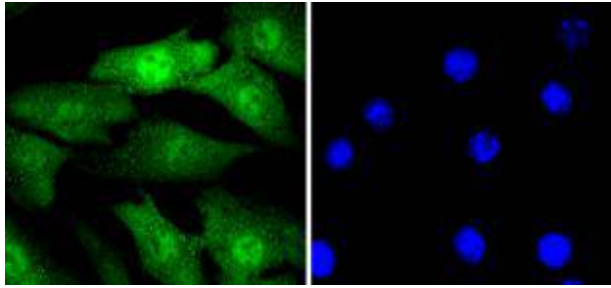
## Application Details

WB: 1:1,000-1:2,000 IHC: 1:50-1:200 ICC: 1:50-1:200FC: 1:50-1:100

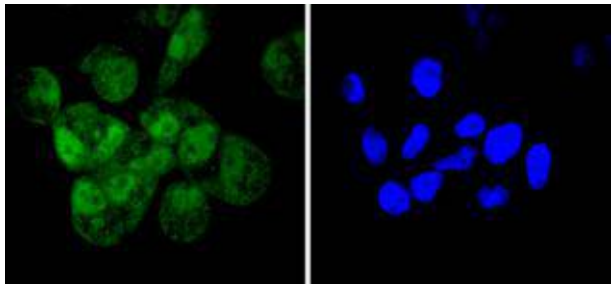
## Images



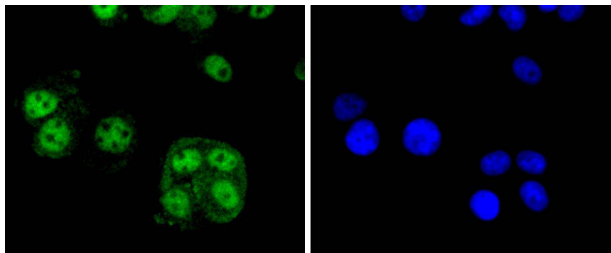
Immunohistochemical analysis of paraffin-embedded human breast carcinoma tissue using anti-Cyclin E2 antibody. Counter stained with hematoxylin.



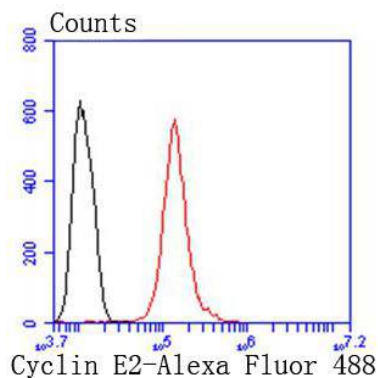
ICC staining Cyclin E2 in NIH/3T3 cells (green). The nuclear counter stain is DAPI (blue). Cells were fixed in paraformaldehyde, permeabilised with 0.25% Triton X100/PBS.



ICC staining Cyclin E2 in HeLa cells (green). The nuclear counter stain is DAPI (blue). Cells were fixed in paraformaldehyde, permeabilised with 0.25% Triton X100/PBS.



ICC staining Cyclin E2 in MCF-7 cells (green). The nuclear counter stain is DAPI (blue). Cells were fixed in paraformaldehyde, permeabilised with 0.25% Triton X100/PBS.



Flow cytometric analysis of HeLa cells with Cyclin E2 antibody at 1/50 dilution (red) compared with an unlabelled control (cells without incubation with primary antibody; black). Alexa Fluor 488-conjugated goat anti rabbit IgG was used as the secondary antibody.

## Background

Cyclin E, along with the three cyclin D proteins and cyclin C, has been shown to represent a putative G1 cyclin on the basis of its cyclic pattern of mRNA expression, with maximal levels being detected near the G1/S boundary. cyclin E has been found to be associated with the transcription factor E2F in a temporally regulated manner. Cyclin E2 is a cyclin E-related protein that specifically interacts with Cdk2 and Cdk3 and with p27 and p21. Cyclin E2 expression peaks at the G1/S phase transition of the cell cycle, in parallel with cyclin E. Whereas cyclin E1 is expressed in most proliferating normal and tumor cells, cyclin E2 levels are low or undetectable in nontransformed cells, and are elevated in tumor-derived cells.

## References

---

Note: This product is for in vitro research use only