

## Phospho-Smad2 (S250) Rabbit mAb

Catalog No: #13406

Package Size: #13406-1 50ul #13406-2 100ul

Orders: order@signalwayantibody.com

Support: tech@signalwayantibody.com

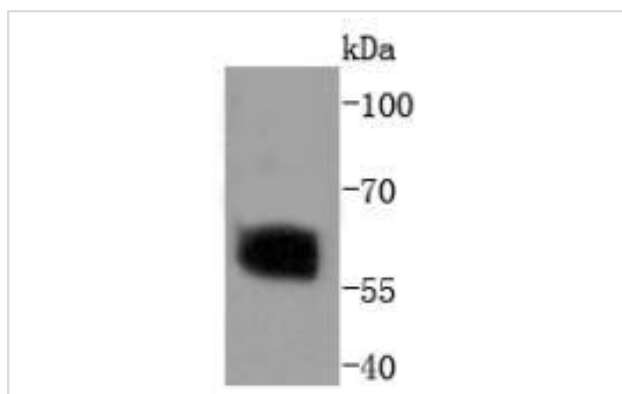
## Description

Product Name	Phospho-Smad2 (S250) Rabbit mAb
Host Species	Rabbit
Clonality	Monoclonal
Clone No.	SD207-1
Purification	ProA affinity purified
Applications	WB, FC
Species Reactivity	Hu, Ms, Rt
Immunogen Description	Synthetic phospho-peptide corresponding to residues surrounding Ser250 of human Smad2.
Other Names	Drosophila, homolog of, MADR2 antibody hMAD-2 antibody HsMAD2 antibody JV18 antibody JV18-1 antibody JV181 antibody MAD antibody MAD homolog 2 antibody MAD Related Protein 2 antibody Mad-related protein 2 antibody MADH2 antibody MADR2 antibody MGC22139 antibody MGC34440 antibody Mother against DPP homolog 2 antibody Mothers against decapentaplegic homolog 2 antibody Mothers against decapentaplegic, Drosophila, homolog of, 2 antibody Mothers against DPP homolog 2 antibody OTTHUMP00000163489 antibody Sma and Mad related protein 2 antibody Sma- and Mad-related protein 2 MAD antibody SMAD 2 antibody SMAD family member 2 antibody SMAD, mothers against DPP homolog 2 antibody SMAD2 antibody SMAD2_HUMAN antibody
Accession No.	Swiss-Prot#:Q15796
Uniprot	Q15796
GeneID	4087;
Calculated MW	58 kDa
Formulation	1*TBS (pH7.4), 1%BSA, 40%Glycerol. Preservative: 0.05% Sodium Azide.
Storage	Store at -20°C

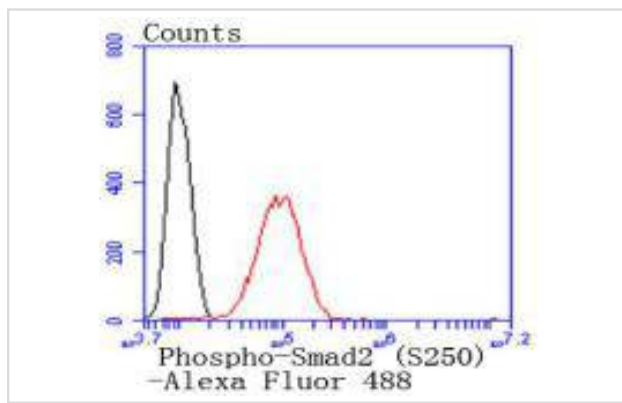
## Application Details

WB: 1:1,000-1:2,000 FC: 1:50-1:100

## Images



Western blot analysis of Phospho-Smad2 (S250) on HeLa cells lysates using anti-Phospho-Smad2 (S250) antibody at 1/1,000 dilution.



Flow cytometric analysis of HeLa cells with Phospho-Smad2 (S250) antibody at 1/50 dilution (red) compared with an unlabelled control (cells without incubation with primary antibody; black). Alexa Fluor 488-conjugated goat anti rabbit IgG was used as the secondary antibody

## Background

Smad proteins, the mammalian homologs of the *Drosophila* mothers against decapentaplegic (Mad), have been implicated as downstream effectors of TGF $\beta$ /BMP signaling. Smad1 (also designated Madr1 or JV4-1) and Smad5 are effectors of BMP-2 and BMP-4 function, while Smad2 (also designated Madr2 or JV18-1) and Smad3 are involved in TGF $\beta$  and Activin-mediated growth modulation. Smad4 (also designated DPC4) has been shown to mediate all of the above activities through interaction with various Smad family members. Smad6 and Smad7 regulate the response to Activin/TGF $\beta$  signaling by interfering with TGF $\beta$ -mediated phosphorylation of other Smad proteins.

## References

Note: This product is for in vitro research use only