

ATF5 Rabbit mAb

Catalog No: #49148

Package Size: #49148-1 50ul #49148-2 100ul

Orders: order@signalwayantibody.com

Support: tech@signalwayantibody.com

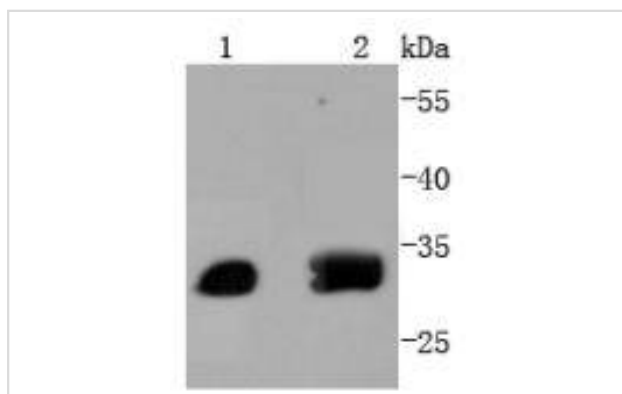
Description

Product Name	ATF5 Rabbit mAb
Host Species	Recombinant Rabbit
Clonality	Monoclonal antibody
Clone No.	SD2099
Purification	ProA affinity purified
Applications	WB, ICC/IF, IHC, IP
Species Reactivity	Hu, Ms, Rt
Immunogen Description	recombinant protein
Other Names	Activating transcription factor 5 alpha/beta antibody Activating transcription factor 5 antibody Activating transcription factor X antibody AFTA antibody ATF 5 antibody ATF 7 antibody ATF7 antibody ATFX antibody BZIP protein ATF7 antibody cAMP dependent transcription factor ATF 5 antibody cAMP dependent transcription factor ATF5 antibody Cyclic AMP dependent transcription factor ATF 5 antibody Cyclic AMP dependent transcription factor ATF5 antibody FLJ34666 antibody HMFN0395 antibody MGC102397 antibody NAP1 antibody NRIF3 associated protein antibody ODA 10 antibody Transcription factor ATFx antibody Transcription factor like protein ODA 10 antibody Transcription factor like protein ODA10 antibody
Accession No.	Swiss-Prot#:Q9Y2D1
Uniprot	Q9Y2D1
GeneID	22809;
Calculated MW	31 kDa
Formulation	1*TBS (pH7.4), 1%BSA, 40%Glycerol. Preservative: 0.05% Sodium Azide.
Storage	Store at -20°C

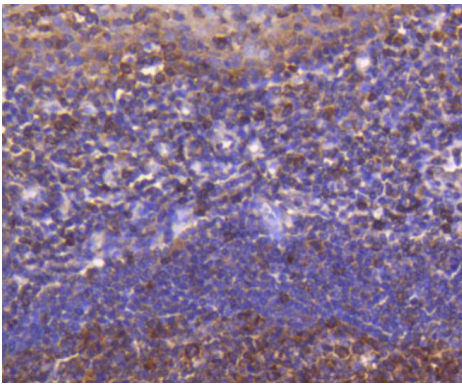
Application Details

WB: 1:1,000-1:2,000 IHC: 1:50-1:200 ICC: 1:50-1:200

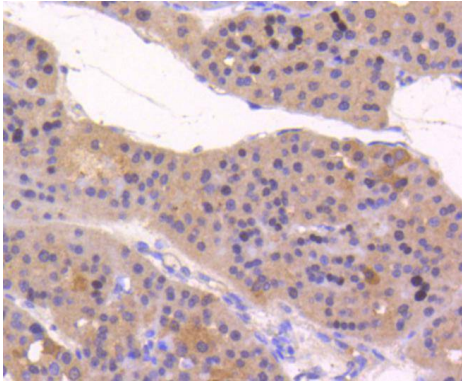
Images



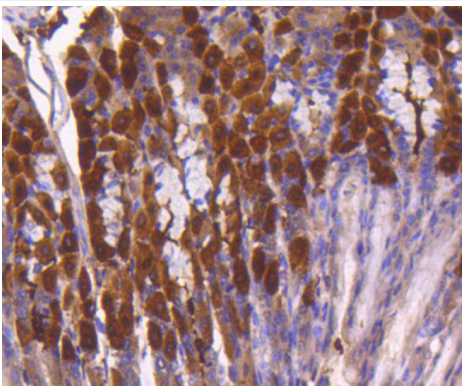
Western blot analysis of ATF5 on different lysates using anti-ATF5 antibody at 1/1,000 dilution. Positive control: Lane 1: Jurkat Lane 2: PC-12



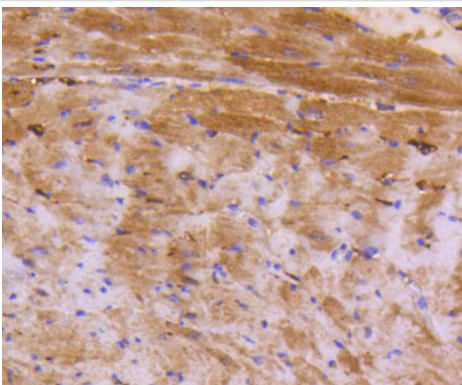
Immunohistochemical analysis of paraffin-embedded human tonsil tissue using anti-ATF5 antibody. Counter stained with hematoxylin.



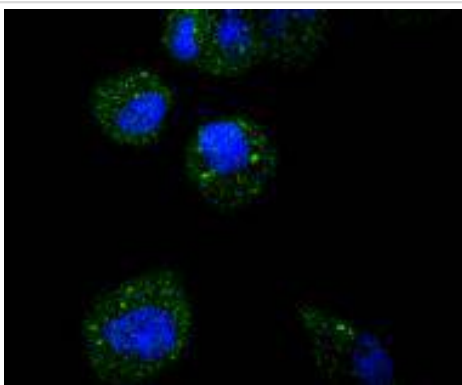
Immunohistochemical analysis of paraffin-embedded human liver cancer tissue using anti-ATF5 antibody. Counter stained with hematoxylin.



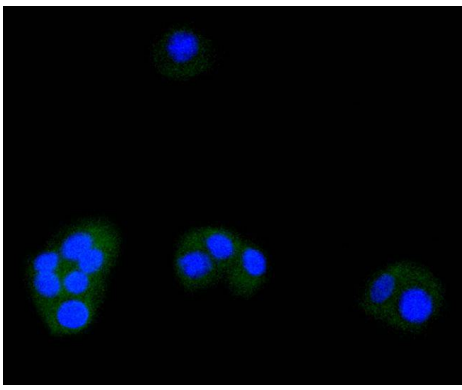
Immunohistochemical analysis of paraffin-embedded mouse stomach tissue using anti-ATF5 antibody. Counter stained with hematoxylin.



Immunohistochemical analysis of paraffin-embedded mouse heart tissue using anti-ATF5 antibody. Counter stained with hematoxylin.



ICC staining ATF5 in HeLa cells (green). The nuclear counter stain is DAPI (blue). Cells were fixed in paraformaldehyde, permeabilised with 0.25% Triton X100/PBS.



ICC staining ATF5 in PC-12 cells (green). The nuclear counter stain is DAPI (blue). Cells were fixed in paraformaldehyde, permeabilised with 0.25% Triton X100/PBS.

Background

Eukaryotic gene transcription is regulated by sequence-specific transcription factors that bind modular cis acting promoter and enhancer elements. The ATF/CREB transcription factor family binds the palindromic cAMP response element (CRE) octanucleotide TGACGTCA. The best characterized members of this gene family include CREB-1, CREB-2 (also designated ATF-4), CRE-BPa, LZIP (also designated CREB3 and Luman), CREM-1, CREM-2, ATF-1, ATF-2, ATF-3, ATF-5, ATF-6 and ATF-7. This family of proteins contain highly divergent N-terminal domains, but share a C-terminal leucine zipper for dimerization and DNA binding. ATF-5 (ATFx), which can localize to the cytoplasm or the nucleus, binds DNA as a dimer. It interacts with CCND3 and PTP4A1.

References

Note: This product is for in vitro research use only