

## UMP-CMP Kinase Polyclonal Antibody

Catalog No: #41523

Package Size: #41523-1 50ul #41523-2 100ul

Orders: [order@signalwayantibody.com](mailto:order@signalwayantibody.com)Support: [tech@signalwayantibody.com](mailto:tech@signalwayantibody.com)

## Description

Product Name	UMP-CMP Kinase Polyclonal Antibody
Host Species	Rabbit
Clonality	Polyclonal
Purification	The antibody was affinity-purified from rabbit antiserum by affinity-chromatography using epitope-specific immunogen.
Applications	WB IHC IF ELISA
Species Reactivity	Hu Ms Rt
Specificity	UMP-CMP Kinase Polyclonal Antibody detects endogenous levels of UMP-CMP Kinase protein.
Immunogen Type	peptide
Immunogen Description	Synthesized peptide derived from the N-terminal region of human UMP-CMP Kinase.
Target Name	UMP-CMP Kinase
Other Names	CMPK1; CMK; CMPK; UCK; UMK; UMPK; UMP-CMP kinase; Cytidine monophosphate kinase; Cytidylate kinase; Deoxycytidylate kinase; Uridine monophosphate kinase; Uridine monophosphate/cytidine monophosphate kinase; UMP/CMP kinase; UMP/CMPK
Accession No.	Swiss-Prot: P30085NCBI Gene ID: 51727
Uniprot	P30085
GeneID	51727;
SDS-PAGE MW	22kd
Concentration	1mg/ml
Formulation	Liquid in PBS containing 50% glycerol, 0.5% BSA and 0.02% sodium azide.
Storage	Store at -20°C/1 year

## Application Details

Western Blot: 1/500 - 1/2000.

Immunohistochemistry: 1/100 - 1/300.

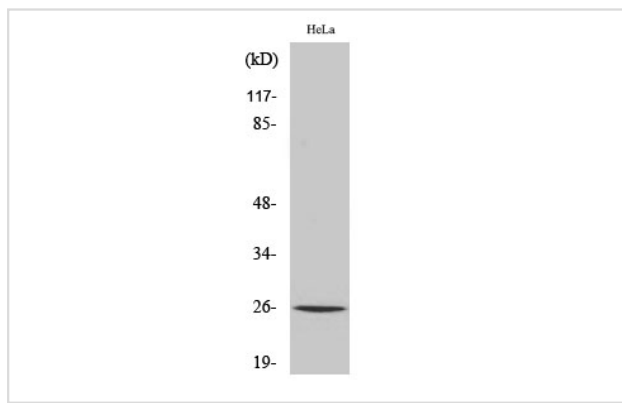
Immunofluorescence: 1/200 - 1/1000.

ELISA: 1/10000.

Not yet tested in other applications.

## Images

Western Blot analysis of HeLa cells using UMP-CMP Kinase Polyclonal Antibody



Note: This product is for in vitro research use only