

## PAX6 Rabbit mAb

Catalog No: #49170

Package Size: #49170-1 50ul #49170-2 100ul

Orders: order@signalwayantibody.com

Support: tech@signalwayantibody.com

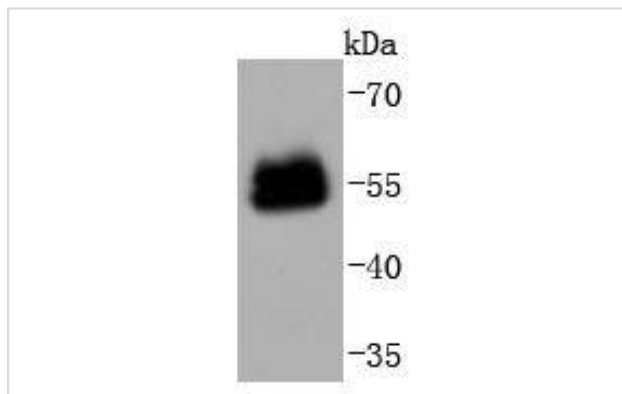
## Description

Product Name	PAX6 Rabbit mAb
Host Species	Recombinant Rabbit
Clonality	Monoclonal antibody
Clone No.	SD081-03
Purification	ProA affinity purified
Applications	WB, IHC, FC
Species Reactivity	Hu, Ms, Rt
Immunogen Description	recombinant protein
Other Names	AN 2 antibody AN antibody AN2 antibody Aniridia type II protein antibody D11S812E antibody FVH1 antibody KIAA0552 antibody Leucine zipper putative tumor suppressor 3 antibody LZTS3 antibody MGC17209 antibody MGDA antibody Oculorhombin antibody Paired box 6 antibody Paired box gene 6 (aniridia keratitis) antibody Paired Box Gene 6 antibody Paired box homeotic gene 6 antibody Paired box protein Pax-6 antibody Paired box protein Pax6 antibody PAX 6 antibody PAX6 antibody PAX6_HUMAN antibody ProSAP-interacting protein 1 antibody PROSAPIP1 antibody Sey antibody WAGR antibody
Accession No.	Swiss-Prot#:P26367
Uniprot	P26367
GeneID	5080;
Calculated MW	47 kDa
Formulation	1*TBS (pH7.4), 1%BSA, 40%Glycerol. Preservative: 0.05% Sodium Azide.
Storage	Store at -20°C

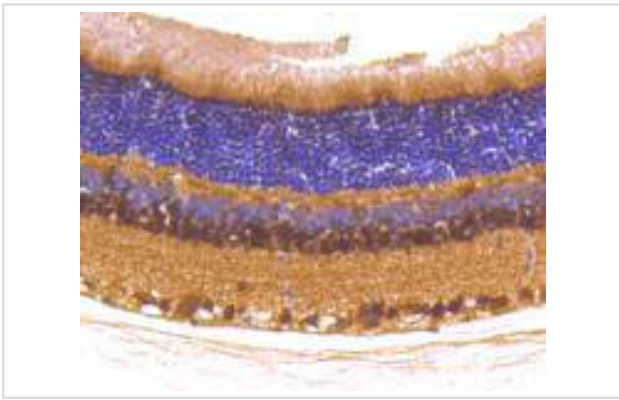
## Application Details

WB: 1:1,000-5,000 IHC: 1:50-1:200 FC: 1:50-1:100

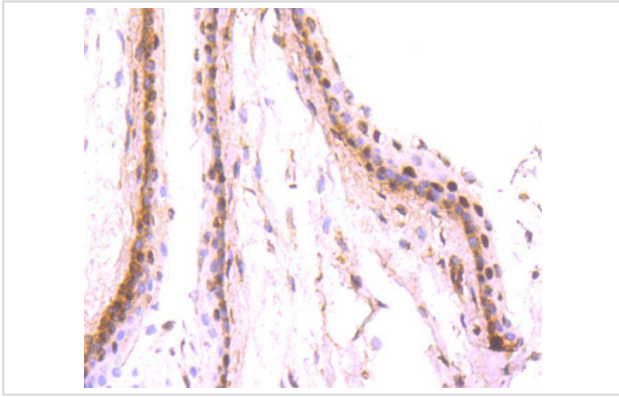
## Images



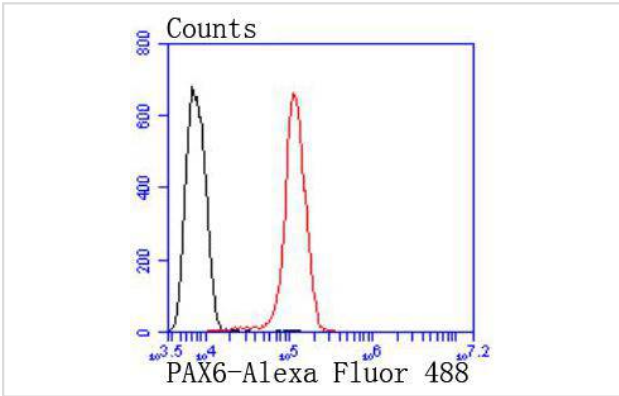
Western blot analysis of PAX6 on mouse eyes lysates using anti-PAX6 antibody at 1/1,000 dilution.



Immunohistochemical analysis of paraffin-embedded rat eyes tissue using anti-PAX6 antibody. Counter stained with hematoxylin.



Immunohistochemical analysis of paraffin-embedded mouse eyes tissue using anti-PAX6 antibody. Counter stained with hematoxylin.



Flow cytometric analysis of SH-SY-5Y cells with PAX6 antibody at 1/50 dilution (red) compared with an unlabelled control (cells without incubation with primary antibody; black). Alexa Fluor 488-conjugated goat anti rabbit IgG was used as the secondary antibody

## Background

Pax genes contain paired domains with strong homology to genes in *Drosophila* which are involved in programming early development. Lesions in the Pax-6 gene account for most cases of aniridia, a congenital malformation of the eye, chiefly characterized by iris hypoplasia, which can cause blindness. Pax-6 is involved in other anterior segment malformations besides aniridia, such as Peters anomaly, a major error in the embryonic development of the eye with corneal clouding with variable iridolenticulocorneal adhesions. The Pax-6 gene encodes a transcriptional regulator that recognizes target genes through its paired-type DNA-binding domain. The paired domain is composed of two distinct DNA-binding subdomains, the amino-terminal subdomain and the carboxy-terminal subdomain, which bind respective consensus DNA sequences. The human Pax-6 gene produces two alternatively spliced isoforms that have the distinct structure of the paired domain.

## References

Note: This product is for in vitro research use only