

Caspase-8 Rabbit mAb

Catalog No: #49184



Package Size: #49184-1 50ul #49184-2 100ul

Orders: order@signalwayantibody.com

Support: tech@signalwayantibody.com

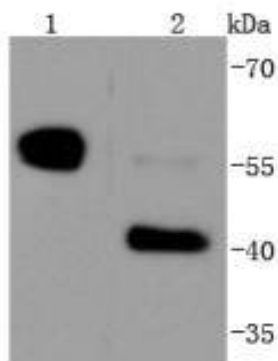
Description

Product Name	Caspase-8 Rabbit mAb
Host Species	Recombinant Rabbit
Clonality	Monoclonal antibody
Clone No.	SD08-06
Purification	ProA affinity purified
Applications	WB, ICC/IF, IHC
Species Reactivity	Hu
Immunogen Description	recombinant protein
Other Names	ALPS2B antibody Amyotrophic lateral sclerosis 2 chromosomal region candidate gene 12 protein antibody Apoptotic cysteine protease antibody Apoptotic protease Mch-5 antibody Apoptotic protease Mch5 antibody CAP4 antibody CASP-8 antibody CASP8 antibody CASP8_HUMAN antibody Caspase 8 antibody Caspase 8 apoptosis related cysteine peptidase antibody Caspase-8 subunit p10 antibody CED 3 antibody FADD Like ICE antibody FADD-homologous ICE/CED-3-like protease antibody FADD-like ICE antibody FLICE antibody FLJ17672 antibody ICE-like apoptotic protease 5 antibody MACH alpha 1/2/3 protein antibody MACH antibody MACH beta 1/2/3/4 protein antibody MCH5 antibody MGC78473 antibody MORT1 associated ced 3 homolog antibody MORT1-associated CED-3 homolog antibody OTTHUMP00000163717 antibody OTTHUMP00000163720 antibody OTTHUMP00000163724 antibody OTTHUMP00000163725 antibody OTTHUMP00000165062 antibody OTTHUMP00000165063 antibody OTTHUMP00000165064 antibody OTTHUMP00000206552 antibody OTTHUMP00000206582 antibody
Accession No.	Swiss-Prot#:Q14790
Uniprot	Q14790
GeneID	841;
Calculated MW	55/46 kDa
Formulation	1*TBS (pH7.4), 1%BSA, 40%Glycerol. Preservative: 0.05% Sodium Azide.
Storage	Store at -20°C

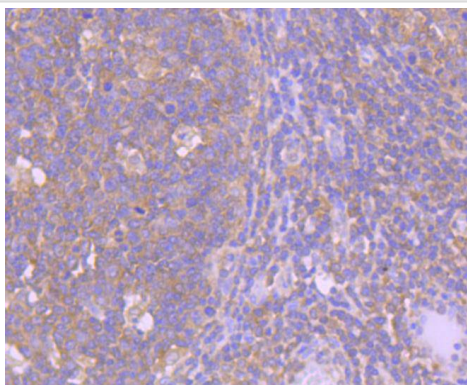
Application Details

WB: 1:1,000-1:2,000 IHC: 1:50-1:200 ICC: 1:50-1:200

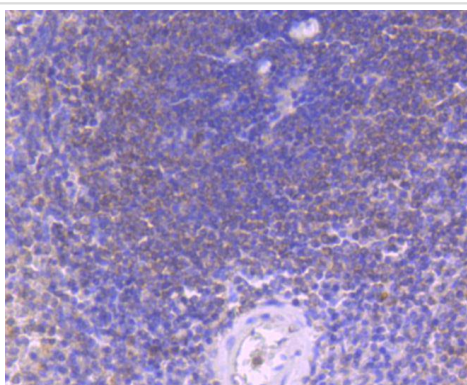
Images



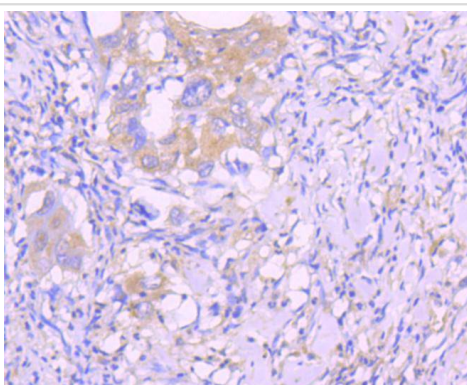
Western blot analysis of Caspase-8 on different lysates using anti-Caspase-8 antibody at 1/1,000 dilution. Positive control:
Lane 1: Jurkat Lane 2: HeLa



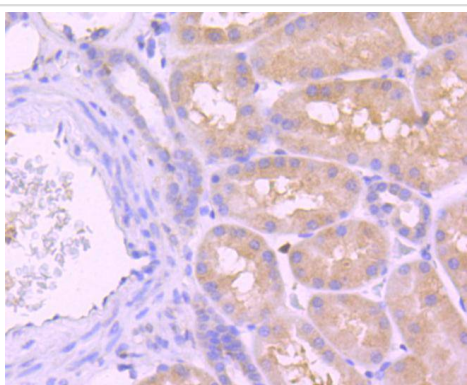
Immunohistochemical analysis of paraffin-embedded human tonsil tissue using anti-Caspase-8 antibody. Counter stained with hematoxylin.



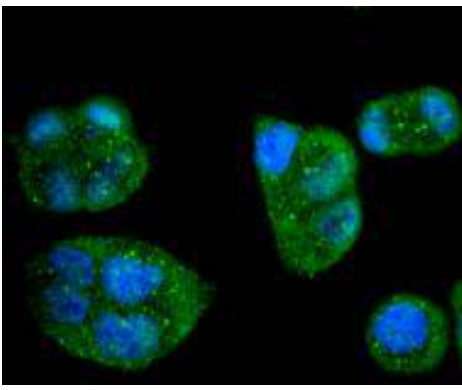
Immunohistochemical analysis of paraffin-embedded human spleen tissue using anti-Caspase-8 antibody. Counter stained with hematoxylin.



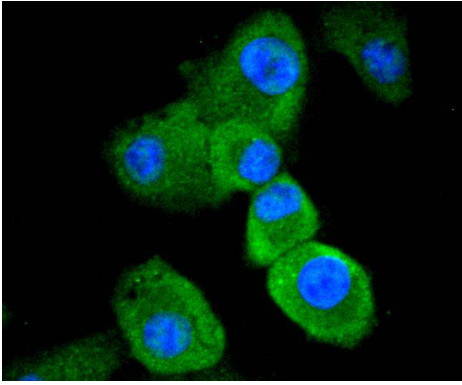
Immunohistochemical analysis of paraffin-embedded human lung cancer tissue using anti-Caspase-8 antibody. Counter stained with hematoxylin.



Immunohistochemical analysis of paraffin-embedded human kidney tissue using anti-Caspase-8 antibody. Counter stained with hematoxylin.



ICC staining Caspase-8 in HeLa cells (green). The nuclear counter stain is DAPI (blue). Cells were fixed in paraformaldehyde, permeabilised with 0.25% Triton X100/PBS.



ICC staining Caspase-8 in A549 cells (green). The nuclear counter stain is DAPI (blue). Cells were fixed in paraformaldehyde, permeabilised with 0.25% Triton X100/PBS.

Background

Initiator caspases, which include caspase-8, activate effector caspases by cleaving inactive forms of effector caspases. In the activation cascade responsible for apoptosis induced by TNFRSF1A and mediated by TNFRSF6/FAS, caspase-8 is the most upstream protease. Caspase-8 binds to adaptor molecule FADD, forming an aggregate referred to as death-inducing signaling complex (DISC), which activates caspase-8. The activated protein is released from the complex and further activates downstream apoptotic proteases. Caspase-8, which is a heterodimer consisting of two subunits (p18 and p10), is widely expressed, but is detected at highest levels in peripheral blood leukocytes (PBLs), thymus, liver and spleen. Defects in CASP8, the gene encoding for caspase-8, may cause CASP8D (caspase-8 deficiency disorder), which is characterized by splenomegaly and CD95-induced apoptosis of PBLs, may lead to immunodeficiency due to defects in T lymphocyte, NK cell and B lymphocyte activation.

References

Note: This product is for in vitro research use only