

## SOX11 Rabbit mAb

Catalog No: #49190

Package Size: #49190-1 50ul #49190-2 100ul

Orders: [order@signalwayantibody.com](mailto:order@signalwayantibody.com)Support: [tech@signalwayantibody.com](mailto:tech@signalwayantibody.com)

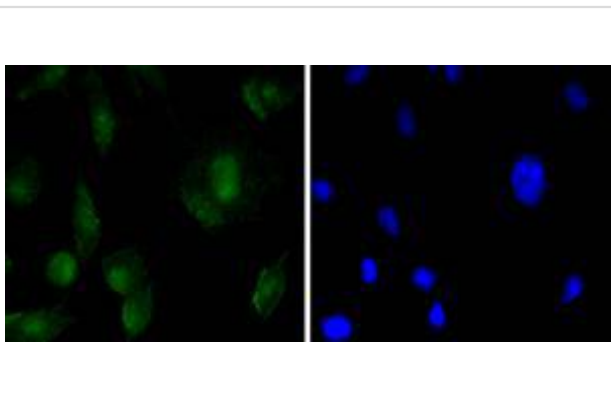
## Description

Product Name	SOX11 Rabbit mAb
Host Species	Recombinant Rabbit
Clonality	Monoclonal antibody
Clone No.	SD203-08
Purification	ProA affinity purified
Applications	WB, ICC/IF, IP
Species Reactivity	Hu, Ms, Rt
Immunogen Description	recombinant protein
Other Names	MRD27 antibody SOX11 antibody SOX11_HUMAN antibody SRY (sex determining region Y) box 11 antibody SRY related HMG box gene 11 antibody SRY-box 11 antibody Transcription factor SOX-11 antibody
Accession No.	Swiss-Prot#:P35716
Uniprot	P35716
GeneID	6664;
Calculated MW	47 kDa
Formulation	1*TBS (pH7.4), 1%BSA, 40%Glycerol. Preservative: 0.05% Sodium Azide.
Storage	Store at -20°C

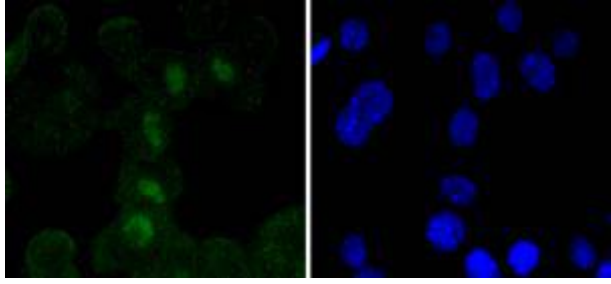
## Application Details

WB: 1:500-1:1000 ICC: 1:50-1:200

## Images



ICC staining SOX11 in SH-SY-5Y cells (green). The nuclear counter stain is DAPI (blue). Cells were fixed in paraformaldehyde, permeabilised with 0.25% Triton X100/PBS.



ICC staining SOX11 in N2A cells (green). The nuclear counter stain is DAPI (blue). Cells were fixed in paraformaldehyde, permeabilised with 0.25% Triton X100/PBS.

## Background

The Sox family are comprised of members that are related to the mammalian sex determining gene SRY. The Sox family of genes similarly contain sequences that encode for the HMG-box domain, which is responsible for the sequence-specific DNA-binding activity. Sox genes encode putative transcriptional regulators implicated in the decision of cell fates during development and the control of diverse developmental processes. The highly complex group of Sox genes cluster at least 40 different loci that rapidly diverged in various animal lineages. At present, 30 Sox genes have been identified. Members of this family have been conserved during evolution and play key roles during animal development. Some are involved in human diseases, including sex reversal. Sox-11 (SRY (sex determining region Y)-box 11) is a 441 amino acid nuclear protein expressed mainly in the nervous system. Containing an HMG box DNA-binding domain, Sox-11 may play a critical role in the developing nervous system.

## References

Note: This product is for in vitro research use only