

Hsp20 Rabbit mAb

Catalog No: #49196

Package Size: #49196-1 50ul #49196-2 100ul

Orders: order@signalwayantibody.comSupport: tech@signalwayantibody.com

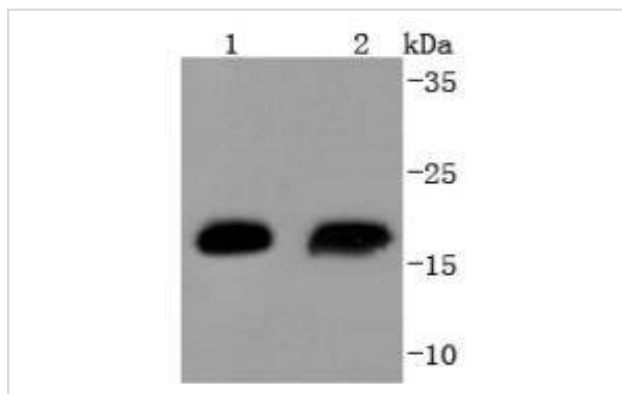
Description

Product Name	Hsp20 Rabbit mAb
Host Species	Recombinant Rabbit
Clonality	Monoclonal antibody
Clone No.	SD086-03
Purification	ProA affinity purified
Applications	WB, IHC, FC
Species Reactivity	Hu, Ms, Rt
Immunogen Description	recombinant protein
Other Names	epididymis luminal protein 55 antibody FLJ32389 antibody Heat shock 20 kDa like protein p20 antibody Heat shock 20 kDa-like protein p20 antibody Heat shock protein alpha crystallin related B6 antibody Heat shock protein beta 6 antibody Heat shock protein beta-6 antibody Heat shock protein, 20-KD antibody Heat-shock 27-KD protein 6 antibody HEL55 antibody Hsp20 antibody HspB6 antibody HSPB6_HUMAN antibody
Accession No.	Swiss-Prot#:O14558
Uniprot	O14558
GeneID	126393;
Calculated MW	17 kDa
Formulation	1*TBS (pH7.4), 1%BSA, 40%Glycerol. Preservative: 0.05% Sodium Azide.
Storage	Store at -20°C

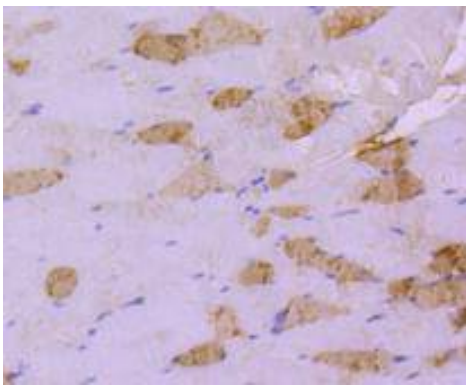
Application Details

WB: 1:1,000-1:2,000 IHC:1:50-1:500 FC: 1:50-1:100

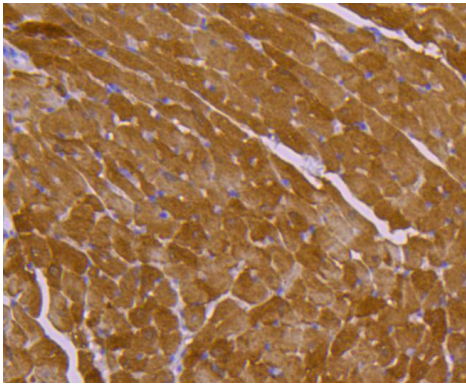
Images



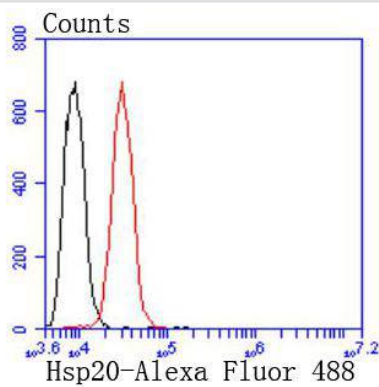
Western blot analysis of Hsp20 on different lysates using anti-Hsp20 antibody at 1/1,000 dilution. Positive control:
Lane 1: Human skeletal muscle Lane 2: Mouse skeletal muscle



Immunohistochemical analysis of paraffin-embedded mouse skeletal muscle tissue using anti-Hsp20 antibody. Counter stained with hematoxylin.



Immunohistochemical analysis of paraffin-embedded mouse heart tissue using anti-Hsp20 antibody. Counter stained with hematoxylin.



Flow cytometric analysis of Hela cells with Hsp20 antibody at 1/50 dilution (red) compared with an unlabelled control (cells without incubation with primary antibody; black). Alexa Fluor 488-conjugated goat anti rabbit IgG was used as the secondary antibody

Background

The heat shock proteins (HSPs) comprise a group of highly conserved, abundantly expressed proteins with diverse functions, including the assembly and sequestering of multiprotein complexes, transportation of nascent poly-peptide chains across cellular membranes and regulation of protein folding. Heat shock proteins (also known as molecular chaperones) fall into six general families: HSP 90, HSP 70, HSP 60, the low molecular weight HSPs, the immunophilins and the HSP 110 family. The low molecular weight family includes HSP 10, HSP 20, HSP 27 (Heme Oxygenase 1), HSP 32 and HSP 40. HSP 20 occurs in two complex sizes, dimers and multimers. It is related to stress proteins and occurs most abundantly in skeletal muscle and heart. HSP 20 is considerably shorter at the C-terminus and less polar than other small heat shock proteins.

References

Note: This product is for in vitro research use only