

Ubiquitin-like modifier-activating enzyme 1 Rabbit mAb

Catalog No: #49197

Orders: order@signalwayantibody.comSupport: tech@signalwayantibody.com

Package Size: #49197-1 50ul #49197-2 100ul

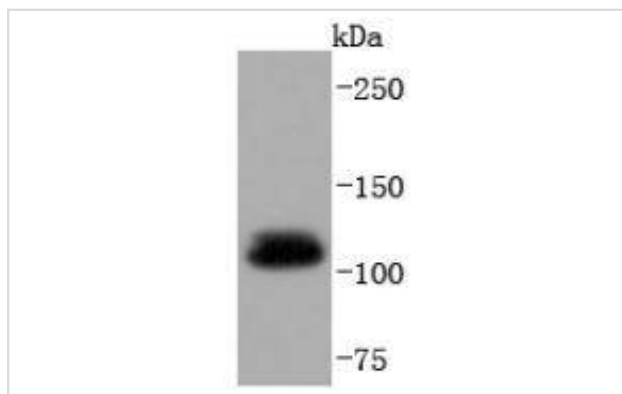
Description

Product Name	Ubiquitin-like modifier-activating enzyme 1 Rabbit mAb
Host Species	Recombinant Rabbit
Clonality	Monoclonal antibody
Clone No.	SD08-62
Purification	ProA affinity purified
Applications	WB, ICC/IF, IHC, FC
Species Reactivity	Hu, Ms, Rt
Immunogen Description	recombinant protein
Other Names	A1S9 antibody A1S9 protein antibody A1S9T and BN75 temperature sensitivity complementing antibody A1S9T antibody A1ST antibody AMCX1 antibody CFAP124 antibody CTD-2522E6.1 antibody GXP 1 antibody GXP1 antibody MGC4781 antibody POC20 antibody POC20 centriolar protein homolog antibody Protein A1S9 antibody SMAX2 antibody Uba1 antibody UBA1, ubiquitin-activating enzyme E1 homolog A antibody UBA1_HUMAN antibody UBA1A antibody UBE 1 antibody UBE 1X antibody UBE1 antibody UBE1X antibody Ubiquitin activating enzyme E1 antibody Ubiquitin-activating enzyme E1 antibody Ubiquitin-like modifier-activating enzyme 1 antibody
Accession No.	Swiss-Prot#:P22314
Uniprot	P22314
GenelD	7317;
Calculated MW	118 kDa
Formulation	1*TBS (pH7.4), 1%BSA, 40%Glycerol. Preservative: 0.05% Sodium Azide.
Storage	Store at -20°C

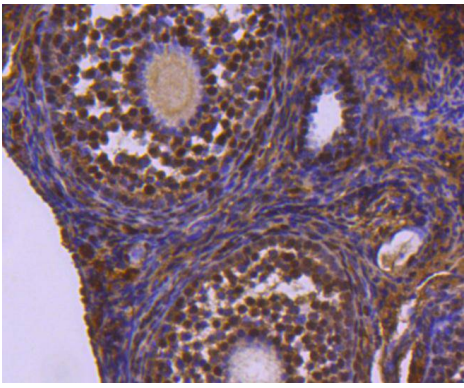
Application Details

WB: 1:1,000-1:2,000 IHC: 1:100-1:500 ICC: 1:50-1:200FC: 1:50-1:100

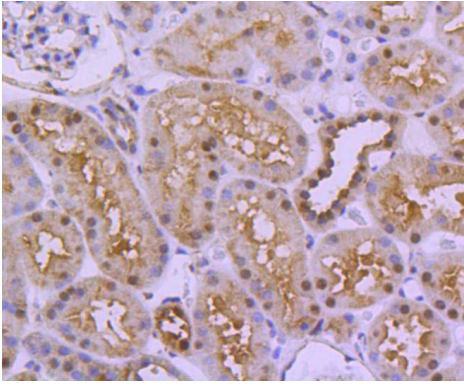
Images



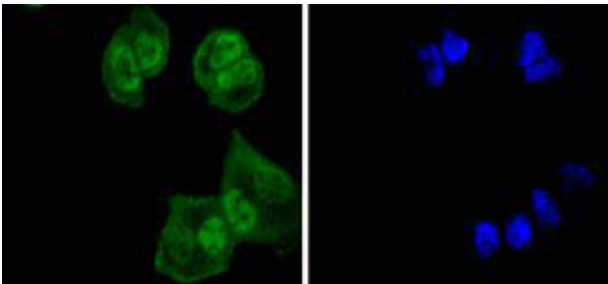
Western blot analysis of UBA1 on mouse liver lysates using anti-UBA1 antibody at 1/5,000 dilution.



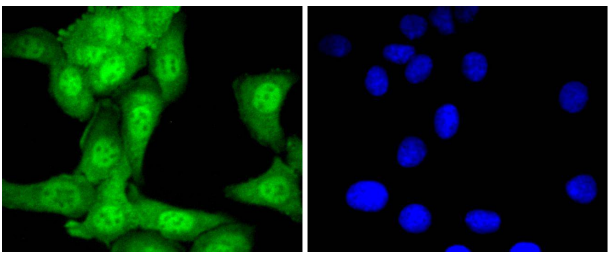
Immunohistochemical analysis of paraffin-embedded mouse ovary tissue using anti-UBA1 antibody. Counter stained with hematoxylin.



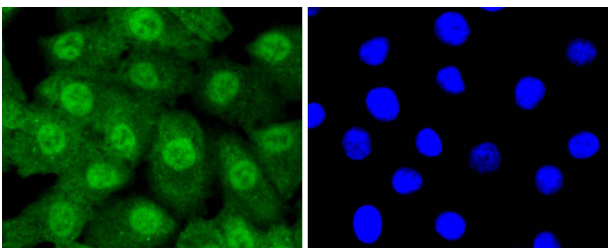
Immunohistochemical analysis of paraffin-embedded human kidney tissue using anti-UBA1 antibody. Counter stained with hematoxylin.



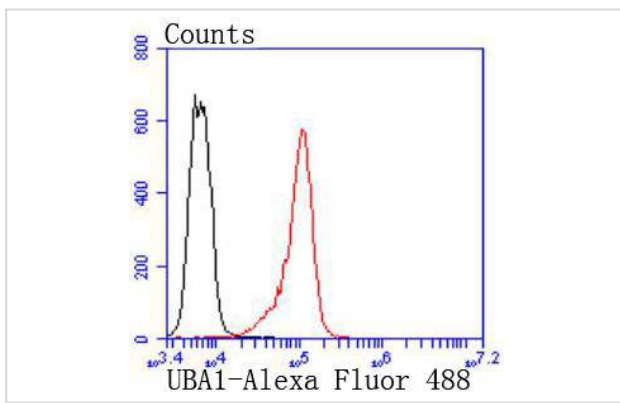
ICC staining UBA1 in HeLa cells (green). The nuclear counter stain is DAPI (blue). Cells were fixed in paraformaldehyde, permeabilised with 0.25% Triton X100/PBS.



ICC staining UBA1 in SKOV-3 cells (green). The nuclear counter stain is DAPI (blue). Cells were fixed in paraformaldehyde, permeabilised with 0.25% Triton X100/PBS.



ICC staining UBA1 in A549 cells (green). The nuclear counter stain is DAPI (blue). Cells were fixed in paraformaldehyde, permeabilised with 0.25% Triton X100/PBS.



Flow cytometric analysis of K562 cells with UBA1 antibody at 1/50 dilution (red) compared with an unlabelled control (cells without incubation with primary antibody; black). Alexa Fluor 488-conjugated goat anti rabbit IgG was used as the secondary antibody.

Background

The ubiquitin activating enzyme E1 (UBE1) catalyzes the first step in ubiquitin conjugation to mark cellular proteins for degradation. Specifically, UBE1 functions to adenylate the C-terminal glycine residue of ubiquitin, a reaction that is ATP-dependent and is preceded by the formation of a thiolester bond with a cysteine residue of UBE1. The UBE1-activated ubiquitin is then transferred to a ubiquitin conjugated enzyme, which donates the ubiquitin residue to target substrates. The UBE1 gene is an example of an X-Y homologous gene, which is X-linked with a distinct Y-linked gene in many mammals. However, no UBE1 homolog is detectable on the human Y chromosome. UBE1 is thought to escape X inactivation in humans.

References

Note: This product is for in vitro research use only