

Phospho-Raf1 (S259) Rabbit mAb

Catalog No: #13413



Package Size: #13413-1 50ul #13413-2 100ul

Orders: order@signalwayantibody.comSupport: tech@signalwayantibody.com

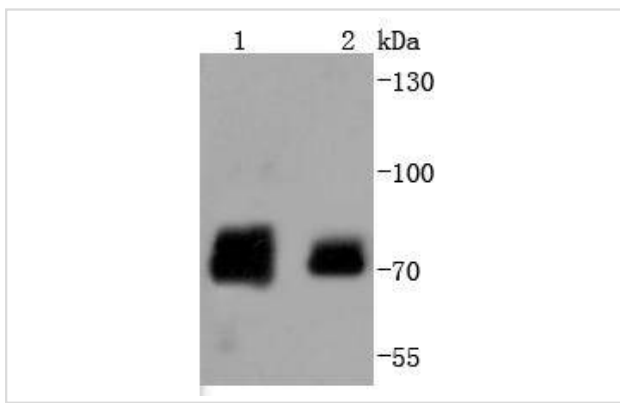
Description

Product Name	Phospho-Raf1 (S259) Rabbit mAb
Host Species	Rabbit
Clonality	Monoclonal
Clone No.	SD85-07
Purification	ProA affinity purified
Applications	WB, IHC
Species Reactivity	Hu, Ms, Rt
Immunogen Description	Synthetic phospho-peptide corresponding to residues surrounding Ser259 of human Raf1
Other Names	c Raf antibody C-raf antibody C-Raf proto-oncogene, serine/threonine kinase antibody CMD1NN antibody Craf 1 transforming gene antibody cRaf antibody Craf1 transforming gene antibody EC 2.7.11.1 antibody kinase Raf1 antibody Murine sarcoma 3611 oncogene 1 antibody NS5 antibody Oncogene MIL antibody Oncogene RAF1 antibody OTTHUMP00000160218 antibody OTTHUMP00000207813 antibody OTTHUMP00000209389 antibody Protein kinase raf 1 antibody Proto-oncogene c-RAF antibody Raf 1 antibody Raf 1 proto oncogene serine/threonine kinase antibody RAF antibody Raf proto oncogene serine/threonine protein kinase antibody RAF proto-oncogene serine/threonine-protein kinase antibody RAF-1 antibody RAF1 antibody RAF1_HUMAN antibody Similar to murine leukemia viral (V-raf-1) oncogene homolog 1 antibody TRANSFORMING REPLICATION-DEFECTIVE MURINE RETROVIRUS 3611-MSV antibody v raf 1 murine leukemia viral oncogene homolog 1 antibody v-raf murine sarcoma viral oncogene homolog 1 antibody v-raf-1 murine leukemia viral oncogene-like protein 1 antibody vraf1 murine leukemia viral oncogene homolog 1 antibody
Accession No.	Swiss-Prot#:P04049
Uniprot	P04049
GenEID	5894;
Calculated MW	73 kDa
Formulation	1*TBS (pH7.4), 1%BSA, 40%Glycerol. Preservative: 0.05% Sodium Azide.
Storage	Store at -20°C

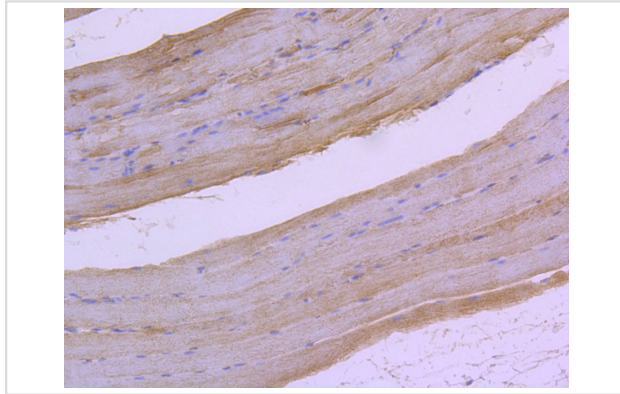
Application Details

WB: 1:1,000-1:2,000 IHC: 1:50-1:200

Images



Western blot analysis of Phospho-Raf1(S259) on different lysates using anti-Phospho-Raf1(S259) antibody at 1/1,000 dilution. Positive control:
Lane 1: Human skeletal muscle
Lane 2: HeLa



Immunohistochemical analysis of paraffin-embedded rat skeletal muscle tissue using anti-Phospho-Raf1(S259) antibody. Counter stained with hematoxylin.

Background

Raf-1 is a ubiquitously expressed cytoplasmic protein with intrinsic serine/threonine kinase activity. Raf-1, or c-Raf, is the cellular homolog of v-Raf, the product of the transforming gene of the 3611 strain of murine sarcoma virus. The unregulated kinase activity of the v-Raf protein is associated with cellular transformation and mitogenesis. Raf-1 is normally suppressed by its regulatory N-terminal domain. Raf-1 is activated in response to a variety of tyrosine kinase receptors as well as in response to pp60v-Src expression. Specifically, Raf-1 is phosphorylated in the catalytic domain at Ser 338 and, to a lesser extent, Ser 339. This phosphorylation requires the co-activation of PI 3-kinase and the Ras signaling pathway. Raf-1 is also phosphorylated on Tyr 340 and 341, which induces the phosphorylation of MEK. Phosphorylation of Ser 621 is essential for the catalytic activity of Raf-1 and downregulation by c-AMP-dependent protein kinase A (PKA). PKA also phosphorylates Raf-1 on Ser 43 and Ser 259. PKA phosphorylation of Ser 259 inhibits Raf-1 and decreases the phosphorylation necessary for Raf-1 activation at Ser 338.

References

Note: This product is for in vitro research use only