

## CDC42EP1 Rabbit mAb

Catalog No: #49211

Package Size: #49211-1 50ul #49211-2 100ul

Orders: order@signalwayantibody.com

Support: tech@signalwayantibody.com

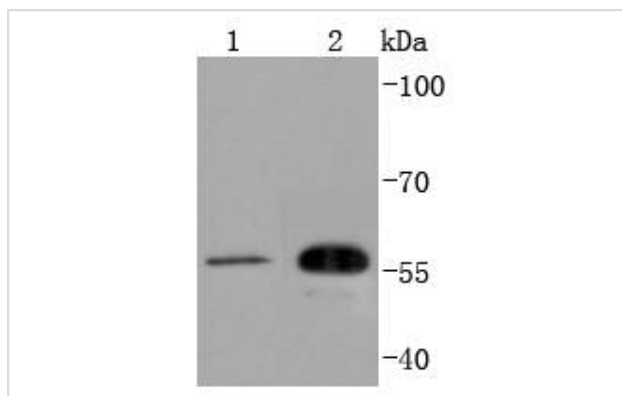
## Description

Product Name	CDC42EP1 Rabbit mAb
Host Species	Recombinant Rabbit
Clonality	Monoclonal antibody
Clone No.	SD08-54
Purification	ProA affinity purified
Applications	WB
Species Reactivity	Hu
Immunogen Description	recombinant protein
Other Names	55 kDa bone marrow stromal/endothelial cell protein antibody Binder of Rho GTPases 5 antibody Bone marrow stromal/endothelial cell protein, 55-KD antibody BORG 5 antibody BORG5 antibody BORG5_HUMAN antibody CDC42 effector protein (Rho GTPase binding) 1 antibody Cdc42 effector protein 1 antibody Cdc42ep1 antibody CEP 1 antibody CEP1 antibody MGC15316 antibody MSE 55 antibody MSE55 antibody OTTHUMP00000028709 antibody Serum constituent protein antibody Serum protein MSE55 antibody
Accession No.	Swiss-Prot#:Q00587
Uniprot	Q00587
GeneID	11135;
Calculated MW	60 kDa
Formulation	1*TBS (pH7.4), 1%BSA, 40%Glycerol. Preservative: 0.05% Sodium Azide.
Storage	Store at -20°C

## Application Details

WB: 1:1,000-1:2,000

## Images



Western blot analysis of CDC42EP1 on different lysates using anti-CDC42EP1 antibody at 1/1,000 dilution. Positive control:  
Lane 1: HUVEC      Lane 2: Hela

## Background

---

MSE55 also known as Borg5 or binder of Rho GTPases 5 is a Cdc42 effector protein that induces long cellular extensions in fibroblasts. MSE55 also increases and mediates actin cytoskeleton reorganization at the plasma membrane. MSE55 is a nonkinase CRIB (Cdc42/Rac interactive-binding) domain-containing molecule. An intact CRIB domain is required for the GTP-dependent binding of MSE55 to Cdc42. MSE55 is expressed in a tissue-specific manner in endothelial and bone marrow stromal cells. MSE55 may have a functional role in hematopoiesis or as a negative regulator of Rho GTPase signaling.

## References

---

---

Note: This product is for in vitro research use only