

HSPA2 Rabbit mAb

Catalog No: #49222

Package Size: #49222-1 50ul #49222-2 100ul

Orders: order@signalwayantibody.com

Support: tech@signalwayantibody.com

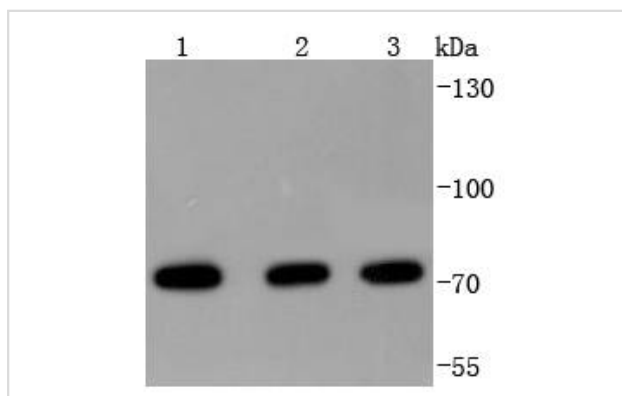
Description

Product Name	HSPA2 Rabbit mAb
Host Species	Recombinant Rabbit
Clonality	Monoclonal antibody
Clone No.	JJ08-77
Purification	ProA affinity purified
Applications	WB, IHC
Species Reactivity	Hu, Ms, Rt
Immunogen Description	recombinant protein
Other Names	70kDa antibody Hcp70.2 antibody Heat shock 70 kDa protein 2 antibody Heat shock protein 2 antibody Heat shock protein 70.2 antibody Heat shock related 70 kDa protein 2 antibody Heat shock-related 70 kDa protein 2 antibody Heat-shock protein, 70-KD, 2 antibody Heat-shock protein, 70-KD, 3 antibody HSP70 2 antibody HSP70 3 antibody Hsp70-2 antibody HSP70-3 antibody HSP70.2 antibody HSP70A2 antibody HSP72 antibody HSP72_HUMAN antibody HSPA2 antibody Hsp70 antibody Hst70 antibody MGC58299 antibody MGC7795 antibody MGC93458 antibody OTTHUMP00000180664 antibody Testis-specific heat shock protein-related antibody
Accession No.	Swiss-Prot#:P54652
Uniprot	P54652
GeneID	3306;
Calculated MW	70 kDa
Formulation	1*TBS (pH7.4), 1%BSA, 40%Glycerol. Preservative: 0.05% Sodium Azide.
Storage	Store at -20°C

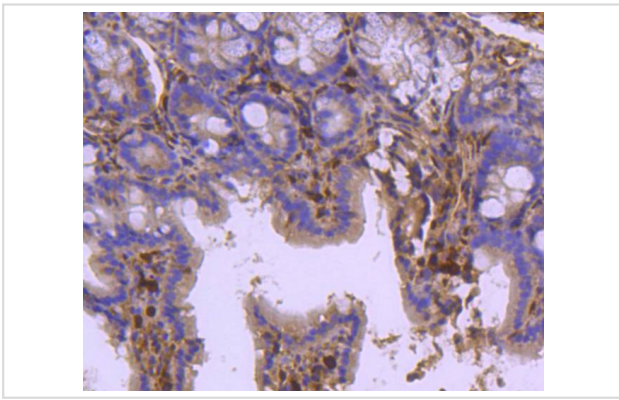
Application Details

WB: 1:1,000-1:2,000 IHC: 1:50-1:200

Images



Western blot analysis of HSPA2 on different lysates using anti-HSPA2 antibody at 1/1,000 dilution. Positive control:
Lane 1: MCF-7 Lane 2: Hela Lane 3: A431



Immunohistochemical analysis of paraffin-embedded mouse colon tissue using anti-HSPA2 antibody. Counter stained with hematoxylin.

Background

HSPA2(heat shock 70kDa protein 2) also known as HEAT-SHOCK PROTEIN, 70-KD, 2, HSP70-2, HEAT-SHOCK PROTEIN, 70-KD, 3 or HSP70-3. Analysis of the sequence indicated that HSPA2 is the human homolog of the murine Hsp70-2 gene, with 91.7% identity in the nucleotide coding sequence and 98.2% in the corresponding amino acid sequence. HSPA2 has less amino acid homology to the other members of the human HSP70 gene family. HSPA2 is constitutively expressed in most tissues, with very high levels in testis and skeletal muscle. The HSPA2 gene is located on chromosome 14q22-q24. Immunohistochemical analysis detected weak expression of HSPA2 in spermatocytes and stronger expression in spermatids and in the tail of mature sperm. HSPA2 may be critical to sperm maturation through its role as a protein chaperone.

References

Note: This product is for in vitro research use only