

Phospho-Hsp27(S78) Rabbit mAb

Catalog No: #13415

Package Size: #13415-1 50ul #13415-2 100ul

Orders: order@signalwayantibody.comSupport: tech@signalwayantibody.com

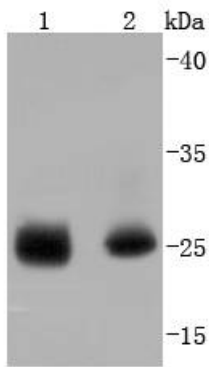
Description

Product Name	Phospho-Hsp27(S78) Rabbit mAb
Host Species	Rabbit
Clonality	Monoclonal
Clone No.	JJ08-70
Purification	ProA affinity purified
Applications	WB, ICC/IF, IHC, IP
Species Reactivity	Hu
Immunogen Description	Synthetic phospho-peptide corresponding to residues surrounding Ser78 of human Hsp27.
Other Names	Heat shock 27kDa protein antibody 28 kDa heat shock protein antibody CMT2F antibody DKFZp586P1322 antibody epididymis secretory protein Li 102 antibody Estrogen regulated 24 kDa protein antibody Estrogen-regulated 24 kDa protein antibody Heat shock 25kDa protein 1 antibody Heat shock 27 kDa protein antibody Heat shock 27kD protein 1 antibody Heat shock 27kDa protein 1 antibody Heat shock 28kDa protein 1 antibody Heat Shock Protein 27 antibody Heat shock protein beta 1 antibody Heat shock protein beta-1 antibody heat shock protein family B (small) member 1 antibody HEL-S-102 antibody HMN2B antibody HS.76067 antibody Hsp 25 antibody HSP 27 antibody Hsp 28 antibody Hsp B1 antibody Hsp25 antibody HSP27 antibody Hsp28 antibody HspB1 antibody HSPB1_HUMAN antibody SRP27 antibody Stress responsive protein 27 antibody Stress-responsive protein 27 antibody
Accession No.	Swiss-Prot#:P04792
Uniprot	P04792
GeneID	3315;
Calculated MW	27 kDa
Formulation	1*TBS (pH7.4), 1%BSA, 40%Glycerol. Preservative: 0.05% Sodium Azide.
Storage	Store at -20°C

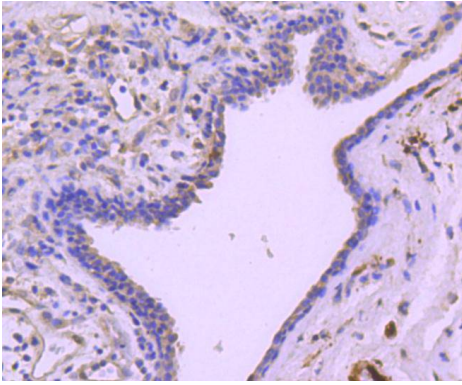
Application Details

WB: 1:1,000-1:2,000 IHC: 1:50-1:200 ICC: 1:50-1:200

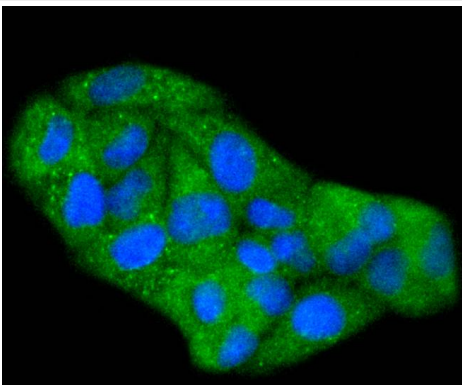
Images



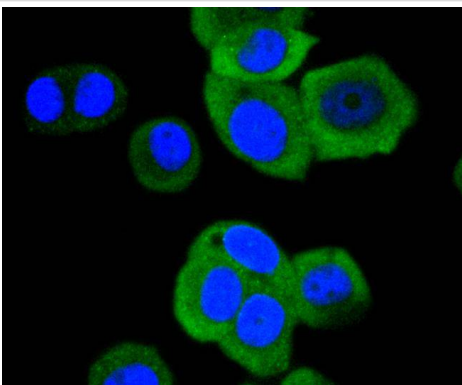
Western blot analysis of Phospho-Hsp27(S78) on different lysates using anti-Phospho-Hsp27(S78) antibody at 1/1,000 dilution. Positive control:
 Lane 1: Human heart
 Lane 2: Human skeletal muscle



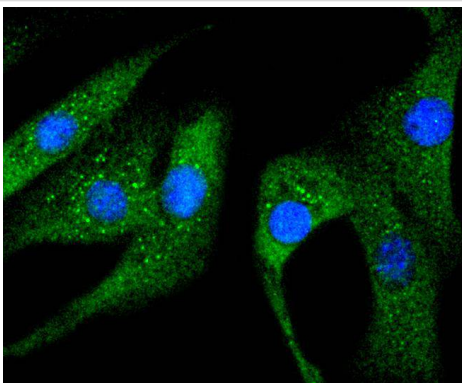
Immunohistochemical analysis of paraffin-embedded human breast carcinoma tissue using anti-Phospho-Hsp27(S78) antibody. Counter stained with hematoxylin.



ICC staining Phospho-Hsp27(S78) in HeLa cells (green). The nuclear counter stain is DAPI (blue). Cells were fixed in paraformaldehyde, permeabilised with 0.25% Triton X100/PBS.



ICC staining Phospho-Hsp27(S78) in MCF-7 cells (green). The nuclear counter stain is DAPI (blue). Cells were fixed in paraformaldehyde, permeabilised with 0.25% Triton X100/PBS.



ICC staining Phospho-Hsp27(S78) in NIH/3T3 cells (green). The nuclear counter stain is DAPI (blue). Cells were fixed in paraformaldehyde, permeabilised with 0.25% Triton X100/PBS.

Background

HSP 27 is a constitutively expressed cytoplasmic protein that co-localizes to the nucleus upon stress-induced insult. Heat shock, cytokines and hormones are among the factors that stimulate the synthesis of HSP 27. The intracellular concentration of the mammalian heat shock protein, HSP 27, increases several-fold after heat shock and other metabolic stresses, and is closely associated with the acquisition of thermotolerance. MAP kinase-activated protein kinase-2 phosphorylates HSP 27 on Serine residues Ser 15, Ser 78 and Ser 82, which are phosphorylated in vivo in response to growth factors and heat shock. Ser 15, Ser 78 and Ser 82 occur in the sequence motif RXXS, which is recognized by ribosomal protein S6 kinase II.

References

Note: This product is for in vitro research use only