

Phospho-B Raf(T401) Rabbit mAb

Catalog No: #13416

Package Size: #13416-1 50ul #13416-2 100ul

Orders: order@signalwayantibody.comSupport: tech@signalwayantibody.com

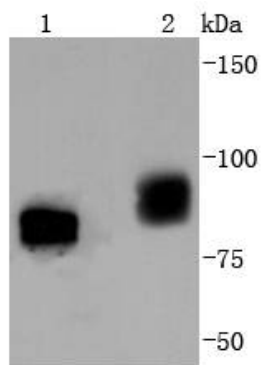
Description

Product Name	Phospho-B Raf(T401) Rabbit mAb
Host Species	Rabbit
Clonality	Monoclonal
Clone No.	JJ08-72
Purification	ProA affinity purified
Applications	WB, ICC, IP
Species Reactivity	Hu, Ms, Rt
Immunogen Description	Synthetic phospho-peptide corresponding to residues surrounding Thr401 of human B Raf.
Other Names	FLJ95109 antibody 94 kDa B raf protein antibody B raf 1 antibody B Raf proto oncogene serine threonine protein kinase antibody B Raf proto oncogene, serine/threonine kinase antibody B RAF1 antibody B-Raf proto-oncogene serine/threonine-protein kinase (p94) antibody BRAF 1 antibody BRAF antibody BRAF_HUMAN antibody BRAF1 antibody cRmil antibody MGC126806 antibody MGC138284 antibody Murine sarcoma viral (v-raf) oncogene homolog B1 antibody Murine sarcoma viral v raf oncogene homolog B1 antibody NS7 antibody Oncogen BRAF antibody oncogene BRAF1 antibody p94 antibody Proto-oncogene B-Raf antibody Proto-oncogene c-Rmil antibody RAFB 1 antibody RAFB1 antibody RMIL antibody Serine/threonine-protein kinase B-raf antibody v raf murine sarcoma viral oncogene homolog B antibody v raf murine sarcoma viral oncogene homolog B1 antibody v-Raf murine sarcoma viral oncogene homolog B1 antibody
Accession No.	Swiss-Prot#:P15056
Uniprot	P15056
GeneID	673;
Calculated MW	84 kDa
Formulation	1*TBS (pH7.4), 1%BSA, 40%Glycerol. Preservative: 0.05% Sodium Azide.
Storage	Store at -20°C

Application Details

WB: 1:1,000-5,000 ICC: 1:100-1:500

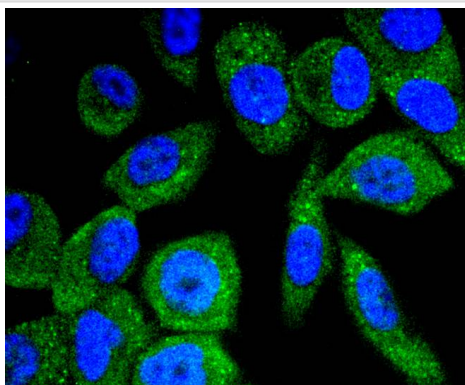
Images



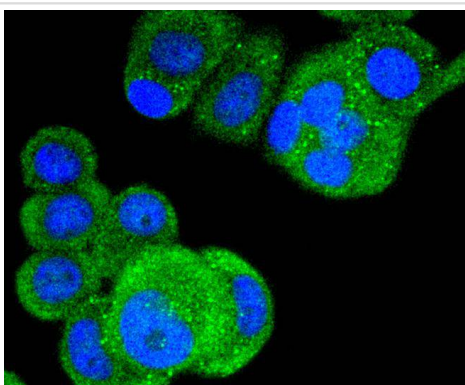
Western blot analysis of Phospho-B Raf(T401) on different lysates using anti-Phospho-B Raf(T401) antibody at 1/1,000 dilution. Positive control:

Lane 1: Mouse testis

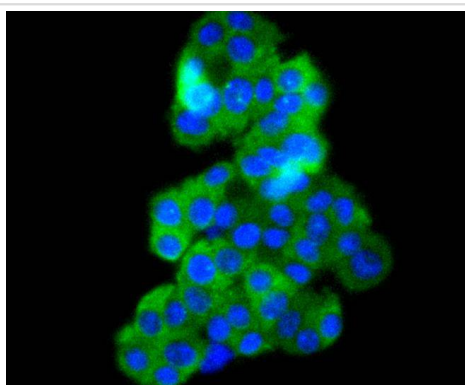
Lane 2: PC-12



ICC staining Phospho-B Raf(T401) in PC-3M cells (green). The nuclear counter stain is DAPI (blue). Cells were fixed in paraformaldehyde, permeabilised with 0.25% Triton X100/PBS.



ICC staining Phospho-B Raf(T401) in MCF-7 cells (green). The nuclear counter stain is DAPI (blue). Cells were fixed in paraformaldehyde, permeabilised with 0.25% Triton X100/PBS.



ICC staining Phospho-B Raf(T401) in PC-12 cells (green). The nuclear counter stain is DAPI (blue). Cells were fixed in paraformaldehyde, permeabilised with 0.25% Triton X100/PBS.

Background

Several serine/threonine protein kinases have been implicated as intermediates in signal transduction pathways. These include ERK/MAP kinases, ribosomal S6 kinase (Rsk) and Raf-1. Raf-1 is a cytoplasmic protein with intrinsic serine/threonine activity. It is broadly expressed in nearly all cell lines tested to date and is the cellular homolog of v-Raf, the product of the transforming gene of the 3611 strain of murine sarcoma virus. The unregulated kinase activity of the v-Raf protein has been associated with transformation and mitogenesis, while the activity of Raf-1 is normally suppressed by a regulatory N-terminal domain. Raf-A, a second member of the Raf gene family of serine/threonine protein kinases, exhibits substantial homology to Raf-1 within the kinase domain of the two molecules, but less homology elsewhere. Expression of Raf-B is highly restricted, with highest levels in the cerebrum and testis.

References

Note: This product is for in vitro research use only