

Raf1 Rabbit mAb

Catalog No: #49229

Package Size: #49229-1 50ul #49229-2 100ul

Orders: order@signalwayantibody.com

Support: tech@signalwayantibody.com

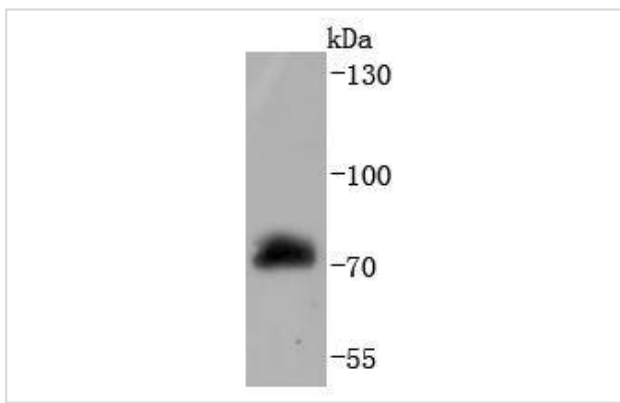
Description

| | |
|-----------------------|--|
| Product Name | Raf1 Rabbit mAb |
| Host Species | Recombinant Rabbit |
| Clonality | Monoclonal antibody |
| Clone No. | JJ086-06 |
| Purification | ProA affinity purified |
| Applications | WB, ICC/IF |
| Species Reactivity | Hu |
| Immunogen Description | recombinant protein |
| Other Names | c Raf antibody C-raf antibody C-Raf proto-oncogene, serine/threonine kinase antibody CMD1NN antibody Craf 1 transforming gene antibody cRaf antibody Craf1 transforming gene antibody EC 2.7.11.1 antibody kinase Raf1 antibody Murine sarcoma 3611 oncogene 1 antibody NS5 antibody Oncogene MIL antibody Oncogene RAF1 antibody OTTHUMP00000160218 antibody OTTHUMP00000207813 antibody OTTHUMP00000209389 antibody Protein kinase raf 1 antibody Proto-oncogene c-RAF antibody Raf 1 antibody Raf 1 proto oncogene serine/threonine kinase antibody RAF antibody Raf proto oncogene serine/threonine protein kinase antibody RAF proto-oncogene serine/threonine-protein kinase antibody RAF-1 antibody RAF1 antibody RAF1_HUMAN antibody Similar to murine leukemia viral (V-raf-1) oncogene homolog 1 antibody TRANSFORMING REPLICATION-DEFECTIVE MURINE RETROVIRUS 3611-MSV antibody v raf 1 murine leukemia viral oncogene homolog 1 antibody v-raf murine sarcoma viral oncogene homolog 1 antibody v-raf-1 murine leukemia viral oncogene-like protein 1 antibody vraf1 murine leukemia viral oncogene homolog 1 antibody |
| Accession No. | Swiss-Prot#:P04049 |
| Uniprot | P04049 |
| GeneID | 5894; |
| Calculated MW | 73 kDa |
| Formulation | 1*TBS (pH7.4), 1%BSA, 40%Glycerol. Preservative: 0.05% Sodium Azide. |
| Storage | Store at -20°C |

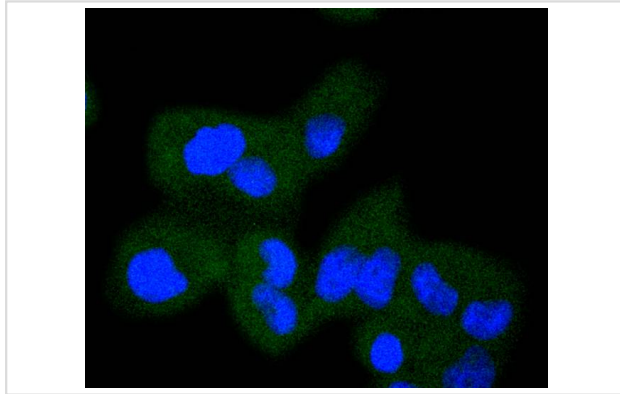
Application Details

WB: 1:1,000-1:2,000 ICC: 1:50-1:200

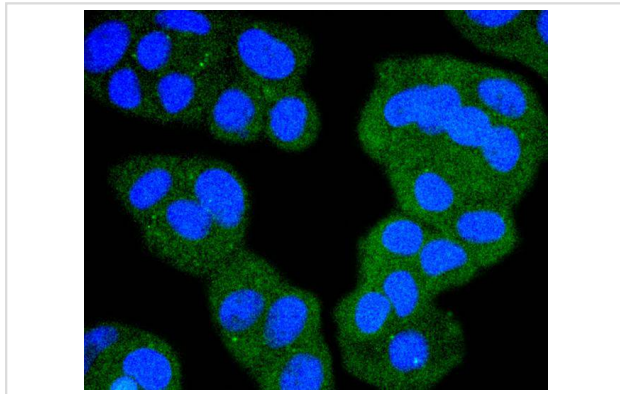
Images



Western blot analysis of Raf1 on HepG2 cells lysates using anti-Raf1 antibody at 1/1,000 dilution.



ICC staining Raf1 in HeLa cells (green). The nuclear counter stain is DAPI (blue). Cells were fixed in paraformaldehyde, permeabilised with 0.25% Triton X100/PBS.



ICC staining Raf1 in MCF-7 cells (green). The nuclear counter stain is DAPI (blue). Cells were fixed in paraformaldehyde, permeabilised with 0.25% Triton X100/PBS.

Background

Several serine/threonine protein kinases have been implicated as intermediates in signal transduction pathways. These include ERK/MAP kinases, ribosomal S6 kinase (Rsk) and Raf-1. Raf-1 is a cytoplasmic protein with intrinsic serine/threonine activity. It is broadly expressed in nearly all cell lines tested to date and is the cellular homolog of v-Raf, the product of the transforming gene of the 3611 strain of murine sarcoma virus. The unregulated kinase activity of the v-Raf protein has been associated with transformation and mitogenesis while the activity of Raf-1 is normally suppressed by a regulatory N-terminal domain. Raf-1 is activated in response to activation of a variety of tyrosine kinase receptors as well as in response to pp60v-Src expression. There is accumulating evidence that Ras p21 may play a role in activation of Raf-1 and may play the role of the messenger from membrane tyrosine kinases to Raf-1.

References

Note: This product is for in vitro research use only