

Vimentin Polyclonal Antibody

Catalog No: #41532

Package Size: #41532-1 50ul #41532-2 100ul

Orders: order@signalwayantibody.comSupport: tech@signalwayantibody.com

Description

Product Name	Vimentin Polyclonal Antibody
Host Species	Rabbit
Clonality	Polyclonal
Purification	The antibody was affinity-purified from rabbit antiserum by affinity-chromatography using epitope-specific immunogen.
Applications	WB IHC IF ELISA
Species Reactivity	Hu
Specificity	Vimentin Polyclonal Antibody detects endogenous levels of Vimentin protein.
Immunogen Type	peptide
Immunogen Description	Synthesized peptide derived from human Vimentin around the non-phosphorylation site of S56.
Target Name	Vimentin
Other Names	VIM; Vimentin
Accession No.	Swiss-Prot: P08670NCBI Gene ID: 7431
Uniprot	P08670
GeneID	7431;
SDS-PAGE MW	54kd
Concentration	1mg/ml
Formulation	Liquid in PBS containing 50% glycerol, 0.5% BSA and 0.02% sodium azide.
Storage	Store at -20°C/1 year

Application Details

Western Blot: 1/500 - 1/2000.

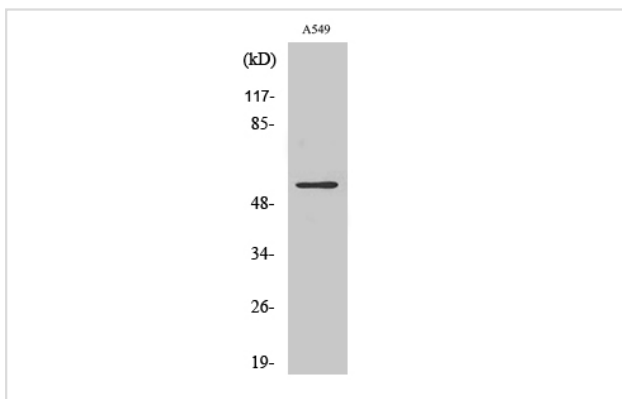
Immunohistochemistry: 1/100 - 1/300.

Immunofluorescence: 1/200 - 1/1000.

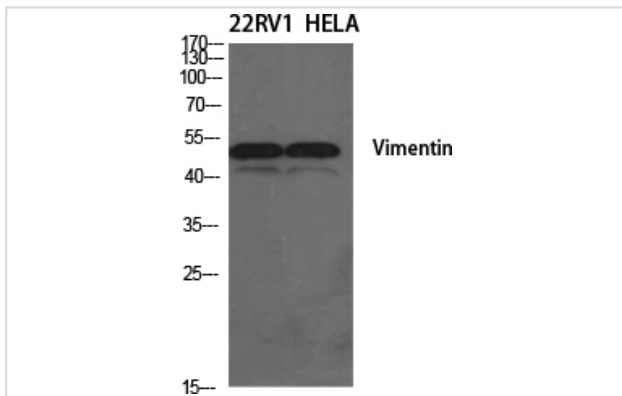
ELISA: 1/20000.

Not yet tested in other applications.

Images



Western Blot analysis of A549 cells using Vimentin Polyclonal Antibody



Western Blot analysis of 22RV1 HELA cells using Vimentin Polyclonal Antibody

Note: This product is for in vitro research use only