

SOX1 Rabbit mAb

Catalog No: #49247

Package Size: #49247-1 50ul #49247-2 100ul

Orders: order@signalwayantibody.comSupport: tech@signalwayantibody.com

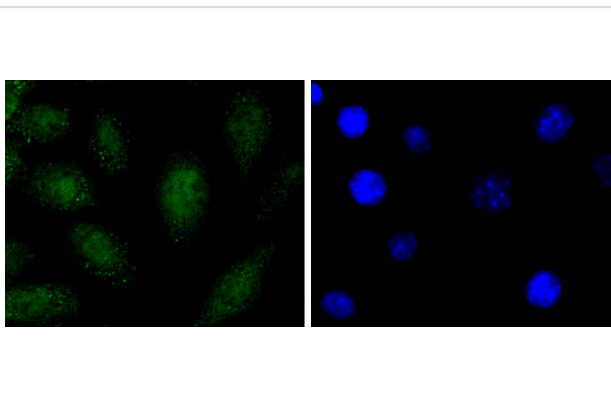
Description

Product Name	SOX1 Rabbit mAb
Host Species	Recombinant Rabbit
Clonality	Monoclonal antibody
Clone No.	JJ20-40
Purification	ProA affinity purified
Applications	WB, ICC/IF, IHC
Species Reactivity	Hu, Ms
Immunogen Description	recombinant protein
Other Names	Sex determining region Y box 1 antibody sox1 antibody SOX1_HUMAN antibody SRY antibody SRY box containing gene 1 antibody SRY related HMG box gene 1 antibody Transcription factor Sox-1 antibody
Accession No.	Swiss-Prot#:O00570
Uniprot	O00570
GeneID	6656;
Calculated MW	39 kDa
Formulation	1*TBS (pH7.4), 1%BSA, 40%Glycerol. Preservative: 0.05% Sodium Azide.
Storage	Store at -20°C

Application Details

WB: 1:500-1:1000 IHC: 1:50-1:100 ICC: 1:50-1:100

Images



ICC staining SOX1 in SHG-44 cells (green). The nuclear counter stain is DAPI (blue). Cells were fixed in paraformaldehyde, permeabilised with 0.25% Triton X100/PBS.

Background

Sox genes comprise a family of genes that are related to the mammalian sex determining gene SRY. These genes similarly contain sequences that encode for the HMG-box domain, which is responsible for the sequence-specific DNA-binding activity. Sox genes encode putative transcriptional regulators implicated in the decision of cell fates during development and the control of diverse developmental processes. The highly complex group of

Sox genes cluster at least 40 different loci that rapidly diverged in various animal lineages. At present, 30 Sox genes have been identified. Members of this family have been shown to be conserved during evolution and to play key roles during animal development. Some are involved in human diseases, including sex reversal.

References

Note: This product is for in vitro research use only