

PD-L1 Rabbit mAb

Catalog No: #49251

Package Size: #49251-1 50ul #49251-2 100ul

Orders: order@signalwayantibody.com

Support: tech@signalwayantibody.com

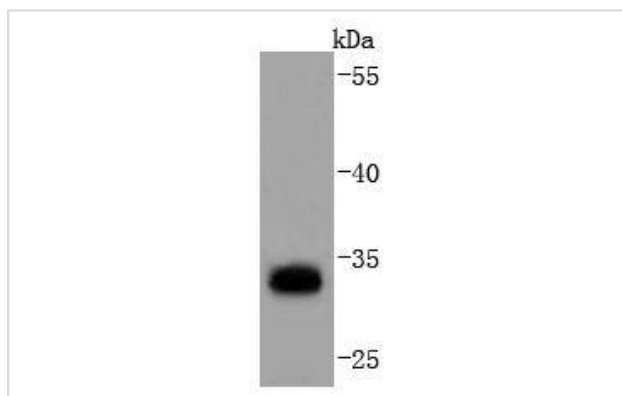
Description

Product Name	PD-L1 Rabbit mAb
Host Species	Recombinant Rabbit
Clonality	Monoclonal antibody
Clone No.	JJ08-95
Purification	ProA affinity purified
Applications	WB, IHC
Species Reactivity	Hu, Ms, Rt
Immunogen Description	recombinant protein
Other Names	B7 H antibody B7 H1 antibody B7 homolog 1 antibody B7-H1 antibody B7H antibody B7H1 antibody CD 274 antibody CD274 antibody CD274 antigen antibody CD274 molecule antibody MGC142294 antibody MGC142296 antibody OTTHUMP00000021029 antibody PD L1 antibody PD-L1 antibody PD1L1_HUMAN antibody PDCD1 ligand 1 antibody PDCD1L1 antibody PDCD1LG1 antibody PDL 1 antibody PDL1 antibody Programmed cell death 1 ligand 1 antibody Programmed death ligand 1 antibody RGD1566211 antibody
Accession No.	Swiss-Prot#:Q9NZQ7
Uniprot	Q9NZQ7
GeneID	29126;
Calculated MW	33 kDa
Formulation	1*TBS (pH7.4), 1%BSA, 40%Glycerol. Preservative: 0.05% Sodium Azide.
Storage	Store at -20°C

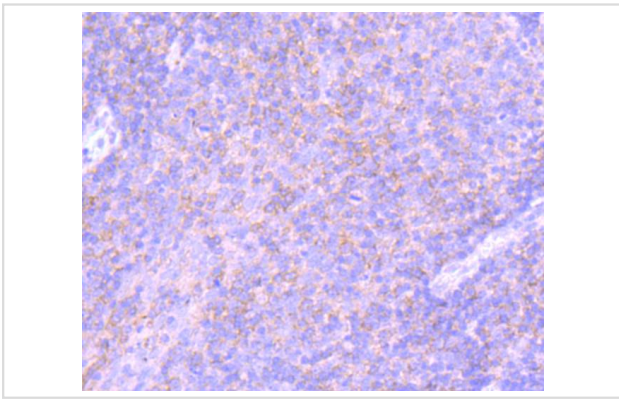
Application Details

WB: 1:1,000 IHC: 1:50-1:200

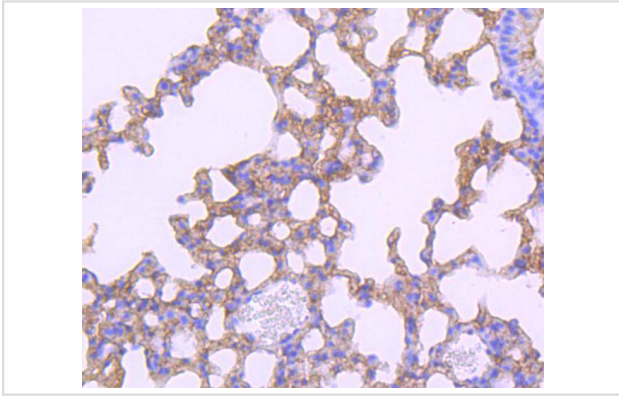
Images



Western blot analysis of PD-L1 on mouse heart lysates using anti-PD-L1 antibody at 1/1,000 dilution.



Immunohistochemical analysis of paraffin-embedded human tonsil tissue using anti-PD-L1 antibody. Counter stained with hematoxylin.



Immunohistochemical analysis of paraffin-embedded mouse lung tissue using anti-PD-L1 antibody. Counter stained with hematoxylin.

Background

Engagement of CD28 by B7-1 (CD80) or B7-2 (CD86) in the presence of antigen promotes T cell proliferation, cytokine production, differentiation of effector T cells, and the induction of Bcl-x, a promoter of T cell survival. Conversely, engagement of CTLA4 by B7-1 or B7-2 may inhibit proliferation and IL-2 production. Pcd-1L1 (programmed cell death ligand-1), also known as B7-H1 or PD-L1, is 290 amino acid type I transmembrane protein which is 20% and 15% identical to B7-1 and B7-2, respectively. Pcd-1L2 has immunoglobulin V-like and C-like domains and a 30 amino acid cytoplasmic tail. It does not bind CD28, cytotoxic T-lymphocyte A4 or ICOS (inducible co-stimulator). IL-2, although produced in small amounts, is required for the effect of Pcd-1L1 co-stimulation. The gene which encodes Pcd-1L1 maps to human chromosome 9p24. Pcd-1L2 (programmed cell death ligand-2) is a 73 amino acid protein which contains a signal sequence, IgV- and IgC-like domains, a transmembrane region and a cytoplasmic region. The gene which encodes Pcd-1L2 maps to human chromosome 9p24.2. The constitutive expression of Pcd-1L1 and Pcd-1L2 on parenchymal cells of heart, lung and kidney suggests that the Pcd-1-Pcd-L system could provide unique negative signaling to help prevent autoimmune disease.

References

Note: This product is for in vitro research use only