

Phospho-PTEN(S380) Rabbit mAb

Catalog No: #13426

Package Size: #13426-1 50ul #13426-2 100ul

Orders: order@signalwayantibody.com

Support: tech@signalwayantibody.com

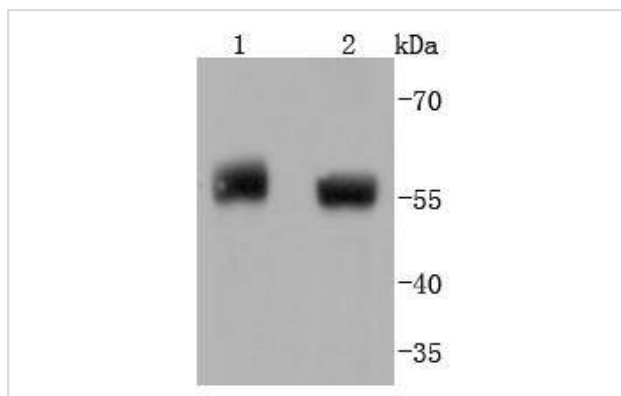
Description

Product Name	Phospho-PTEN(S380) Rabbit mAb
Host Species	Rabbit
Clonality	Monoclonal
Clone No.	JJ08-81
Purification	ProA affinity purified
Applications	WB, ICC
Species Reactivity	Hu, Ms, Rt
Immunogen Description	Synthetic phospho-peptide corresponding to residues surrounding Ser380 of human PTEN.
Other Names	10q23del antibody BZS antibody DEC antibody GLM2 antibody MGC11227 antibody MHAM antibody MMAC1 antibody MMAC1 phosphatase and tensin homolog deleted on chromosome 10 antibody Mutated in multiple advanced cancers 1 antibody Phosphatase and tensin homolog antibody Phosphatase and tensin like protein antibody Phosphatidylinositol 3,4,5-trisphosphate 3-phosphatase and dual-specificity protein phosphatase PTEN antibody Pten antibody PTEN_HUMAN antibody PTEN1 antibody TEP1 antibody
Accession No.	Swiss-Prot#:P60484
Uniprot	P60484
GeneID	5728;
Calculated MW	55 kDa
Formulation	1*TBS (pH7.4), 1%BSA, 40%Glycerol. Preservative: 0.05% Sodium Azide.
Storage	Store at -20°C

Application Details

WB: 1:1,000-1:2,000 ICC: 1:100-1:500

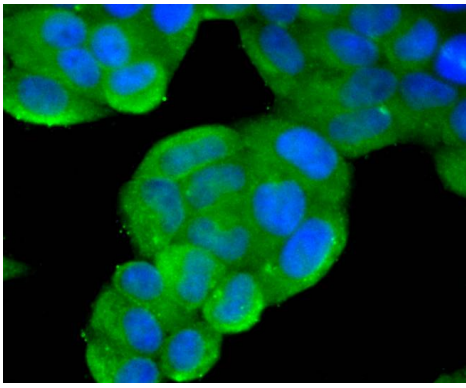
Images



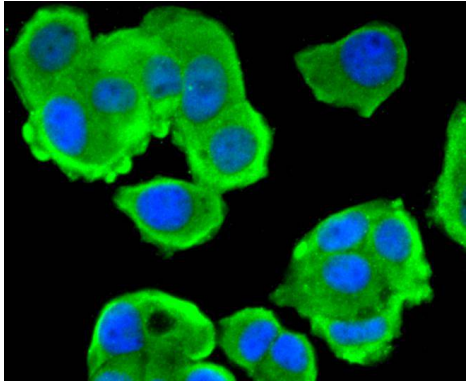
Western blot analysis of Phospho-PTEN(S380) on different lysates using anti-Phospho-PTEN(S380) antibody at 1/1,000 dilution. Positive control:

Lane 1: Human placenta

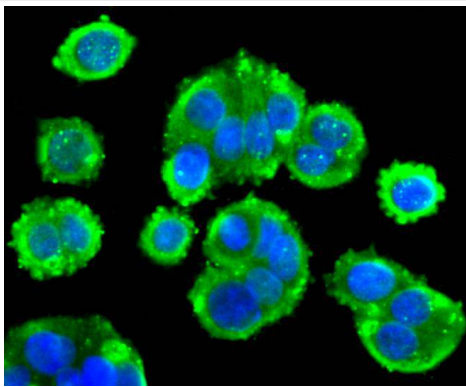
Lane 2: Human lung



ICC staining Phospho-PTEN(S380) in HeLa cells (green). The nuclear counter stain is DAPI (blue). Cells were fixed in paraformaldehyde, permeabilised with 0.25% Triton X100/PBS.



ICC staining Phospho-PTEN(S380) in HeLa cells (green). The nuclear counter stain is DAPI (blue). Cells were fixed in paraformaldehyde, permeabilised with 0.25% Triton X100/PBS.



ICC staining Phospho-PTEN(S380) in SW480 cells (green). The nuclear counter stain is DAPI (blue). Cells were fixed in paraformaldehyde, permeabilised with 0.25% Triton X100/PBS.

Background

As human tumors progress to advanced stages, one genetic alteration that occurs at high frequency is a loss of heterozygosity (LOH) at chromosome 10q23. Mapping of homozygous deletions on this chromosome led to the isolation of the PTEN gene, also designated MMAC1 (for mutated in multiple advanced cancers) and TEP1. This candidate tumor suppressor gene exhibits a high frequency of mutations in human glioblastomas and is also mutated in other cancers, including sporadic brain, breast, kidney and prostate cancers. PTEN has been associated with Cowden disease, an autosomal dominant cancer predisposition syndrome. The PTEN gene product is a putative protein tyrosine phosphatase that is localized to the cytoplasm and shares extensive homology with the cytoskeletal proteins tensin and auxilin. Gene transfer studies have indicated that the phosphatase domain of PTEN is essential for growth suppression of glioma cells.

References

Note: This product is for in vitro research use only