

ARID1A Rabbit mAb

Catalog No: #49272

Package Size: #49272-1 50ul #49272-2 100ul

Orders: order@signalwayantibody.com

Support: tech@signalwayantibody.com

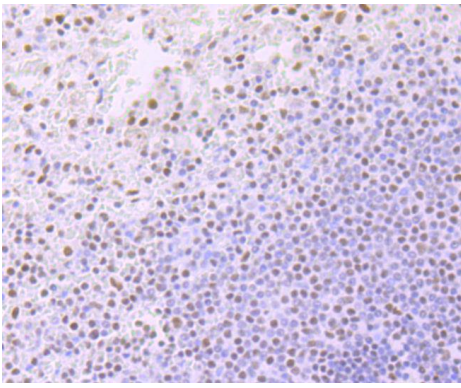
Description

Product Name	ARID1A Rabbit mAb
Host Species	Recombinant Rabbit
Clonality	Monoclonal antibody
Clone No.	JJ09-01
Purification	ProA affinity purified
Applications	ICC/IF, IHC
Species Reactivity	Hu, Ms, Rt
Immunogen Description	recombinant protein
Other Names	actin-dependent regulator of chromatin subfamily F member 1 antibody ARI1A_HUMAN antibody ARID domain containing protein 1A antibody ARID domain-containing protein 1A antibody ARID1A antibody AT rich interactive domain 1A (SWI like) antibody AT rich interactive domain 1A antibody AT rich interactive domain containing protein 1A antibody AT-rich interactive domain-containing protein 1A antibody B120 antibody BAF250 antibody BAF250A antibody BM029 antibody brain protein 120 antibody BRG1 associated factor 250 antibody BRG1 associated factor 250a antibody BRG1-associated factor 250 antibody BRG1-associated factor 250a antibody C1ORF4 antibody chromatin remodeling factor p250 antibody chromosome 1 open reading frame 4 antibody ELD antibody hELD antibody hOSA1 antibody matrix-associated antibody MRD14 antibody Osa homolog 1 antibody OSA1 antibody OSA1 nuclear protein antibody P270 antibody SMARCF1 antibody SWI like protein antibody SWI SNF complex protein p270 antibody SWI-like protein antibody SWI/SNF complex protein p270 antibody SWI/SNF related, matrix associated, actin dependent regulator of chromatin, subfamily f, member 1 antibody SWI/SNF-related antibody
Accession No.	Swiss-Prot#:O14497
Uniprot	O14497
GenID	8289;
Formulation	1*TBS (pH7.4), 1%BSA, 40%Glycerol. Preservative: 0.05% Sodium Azide.
Storage	Store at -20°C

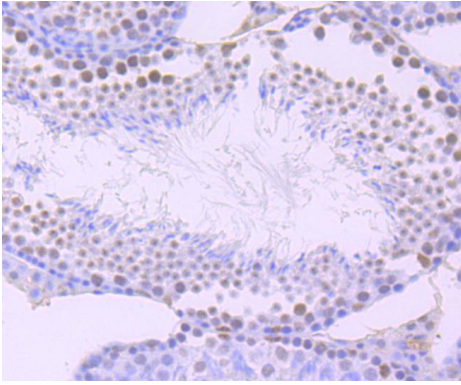
Application Details

IHC: 1:50-1:200 ICC: 1:50-1:200

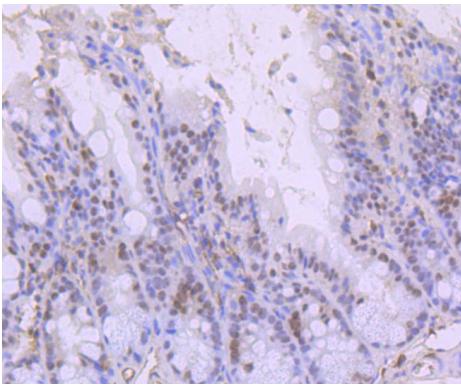
Images



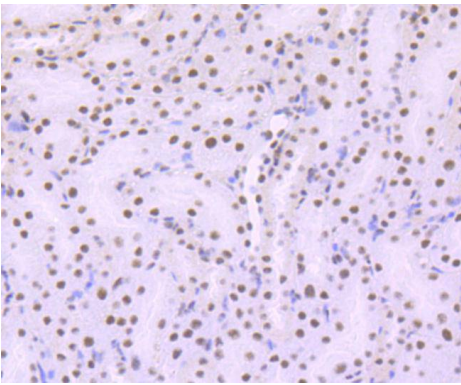
Immunohistochemical analysis of paraffin-embedded human spleen tissue using anti-ARID1A antibody. Counter stained with hematoxylin.



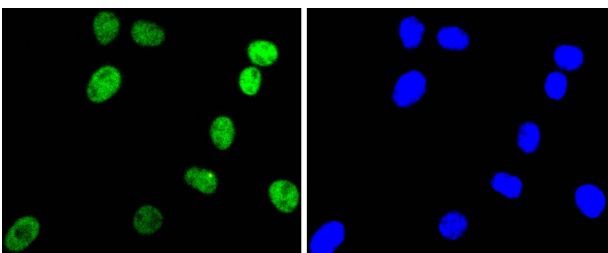
Immunohistochemical analysis of paraffin-embedded mouse testis tissue using anti-ARID1A antibody. Counter stained with hematoxylin.



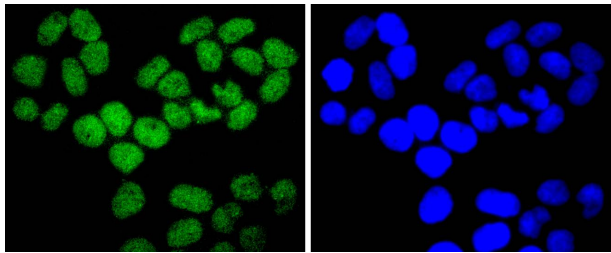
Immunohistochemical analysis of paraffin-embedded mouse colon tissue using anti-ARID1A antibody. Counter stained with hematoxylin.



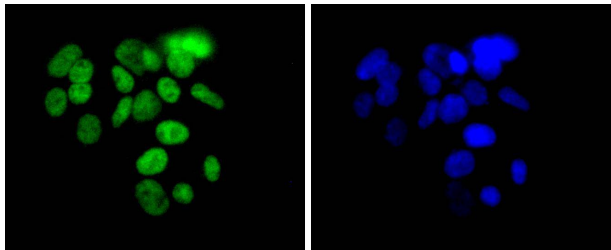
Immunohistochemical analysis of paraffin-embedded mouse brain tissue using anti-ARID1A antibody. Counter stained with hematoxylin.



ICC staining ARID1A in SH-SY-5Y cells (green). The nuclear counter stain is DAPI (blue). Cells were fixed in paraformaldehyde, permeabilised with 0.25% Triton X100/PBS.



ICC staining ARID1A in HeLa cells (green). The nuclear counter stain is DAPI (blue). Cells were fixed in paraformaldehyde, permeabilised with 0.25% Triton X100/PBS.



ICC staining ARID1A in 293 cells (green). The nuclear counter stain is DAPI (blue). Cells were fixed in paraformaldehyde, permeabilised with 0.25% Triton X100/PBS.

Background

The SWI-SNF complex is involved in the activation of transcription via the remodeling of nucleosome structure in an ATP-dependent manner. Brm (also designated SNF2 α) and Brg-1 (also designated SNF2 β) are the ATPase subunits of the mammalian SWI-SNF complex. Brm, Brg-1, Ini1 (integrase interactor 1, also designated SNF5), BAF155 (also designated SRG3) and BAF170 are thought to comprise the functional core of the SWI-SNF complex. Addition of Ini1, BAF155 and BAF170 to Brg-1 appears to increase remodeling activity. Other complex subunits, such as BAF250a (p270 or ARID 1A) and BAF250b(ARID1B), are thought to play regulatory roles.

References

Note: This product is for in vitro research use only